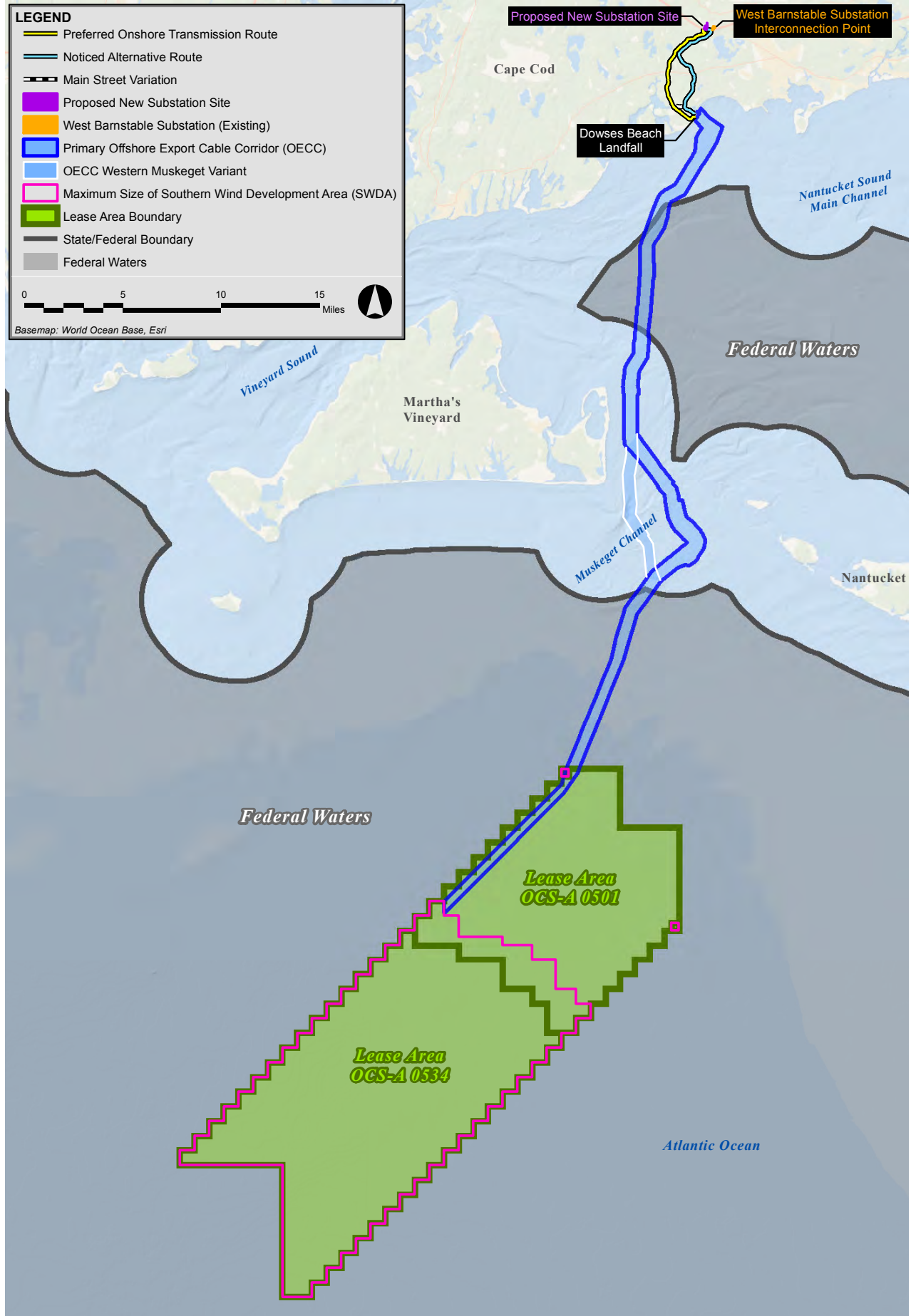





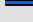




Attachment B

Figures



New England Wind 2 Connector Project

LEGEND

-  Preferred Onshore Transmission Route
-  Noticed Alternative Route
-  Main Street Variation
-  Grid Interconnect Route Option G1
-  Grid Interconnect Route Option G2
-  Grid Interconnect Route Option G3
-  Proposed New Substation Site
-  West Barnstable Substation (Existing)

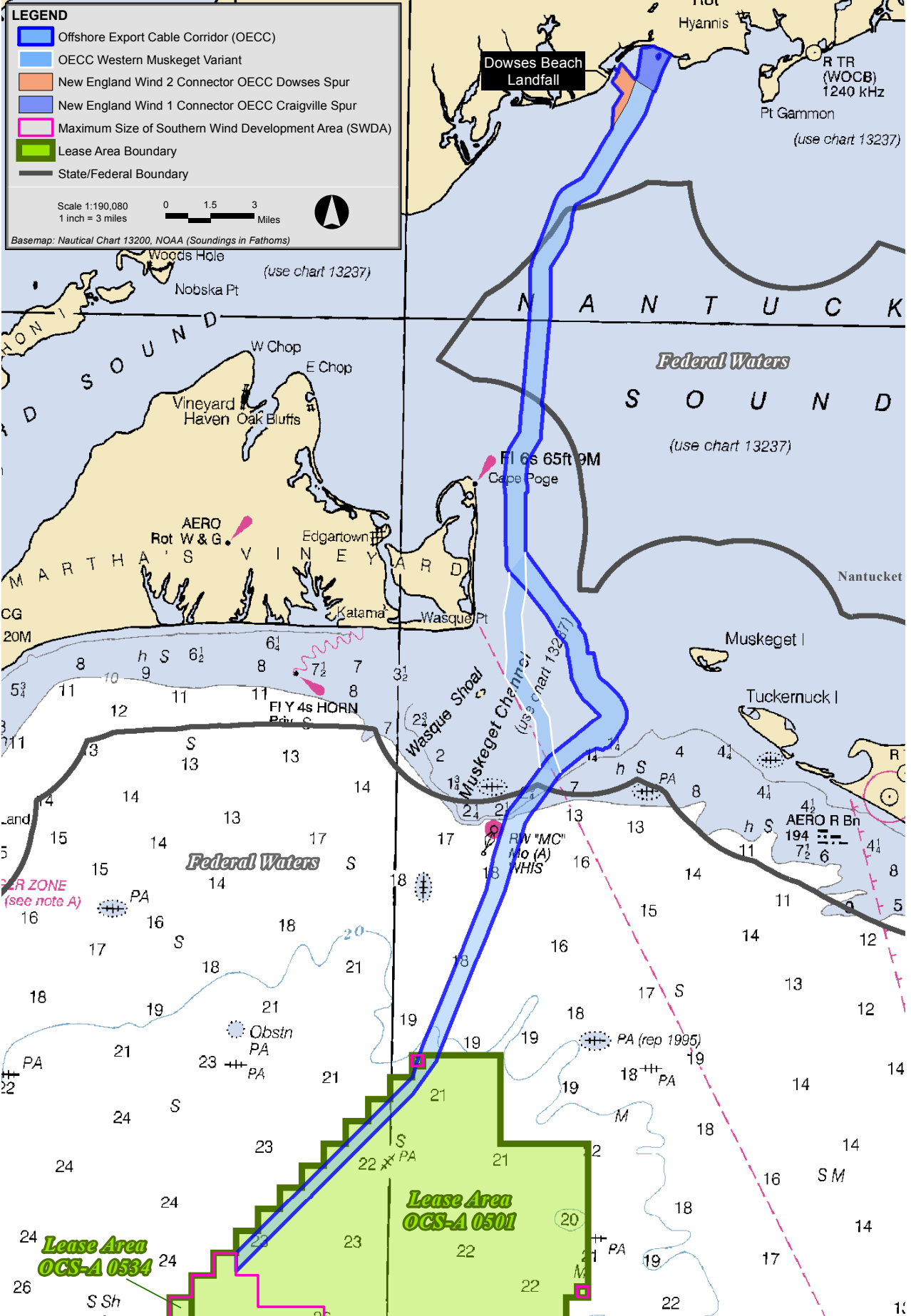
Scale 1:21,600
1 inch = 1,800 feet

0 900 1,800 Feet

Basemap: Nearmap Aerial, April 2022



New England Wind 2 Connector Project



New England Wind 2 Connector Project



Figure 3
Offshore Export Cable Corridor (OECC)



Design:

- | | | | | | |
|---|-----------------------------|---|-------------------|----|-------------------|
| 1 | Conductor (Al or Cu) | 5 | Swellable tape | 9 | Filler profiles |
| 2 | Inner semi-conducting layer | 6 | Lead sheath | 10 | Bedding (PP) |
| 3 | XLPE insulation | 7 | PE overshooth | 11 | Armouring |
| 4 | Outer semi-conducting layer | 8 | Fibre optic cable | 12 | Outer sheath (PP) |



Design:

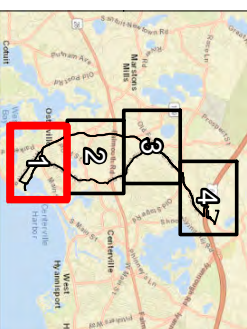
- 1 Conductor (Al or Cu)
- 2 Inner semi-conducting layer
- 3 XLPE insulation
- 4 Outer semi-conducting layer
- 5 Wire screen (Al or Cu)
- 6 Lead sheath
- 7 PE overshath



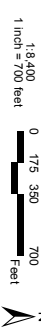
New England Wind 2 Connector Project



LOCUS



SCALE

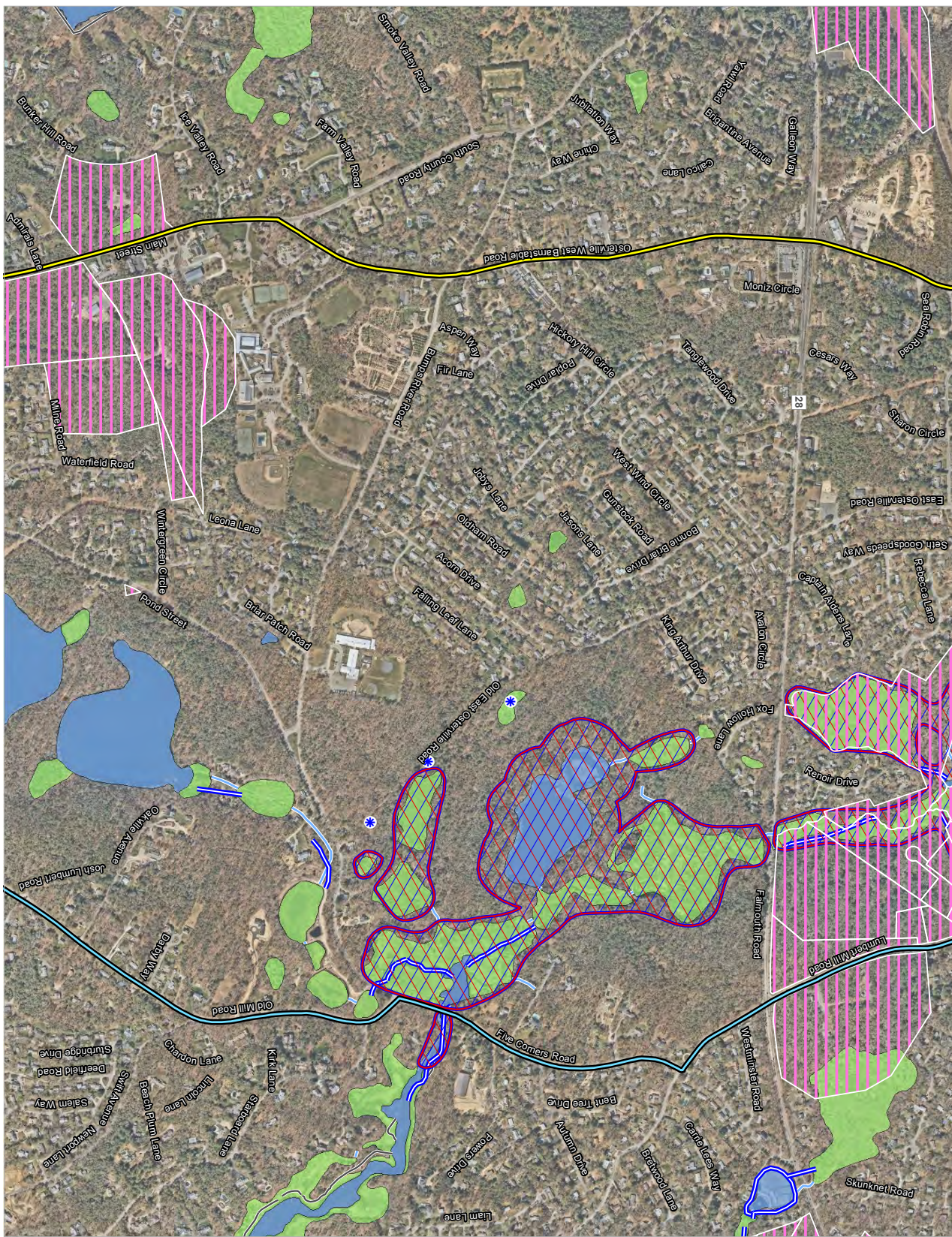


LEGEND

- Preferred Onshore Transmission Route
- Noticed Alternative Route
- Main Street Variation
- Grid Interconnect Route Option G1
- Grid Interconnect Route Option G2
- Grid Interconnect Route Option G3
- Proposed New Substation (Existing)
- West Barnstable Substation (Existing)
- Article 97 Land
- USGS Perennial Stream
- DEP Hydrologic Connection
- DEP Wetland
- DEP Open Water
- DEP Historic High Water Line
- NHESP Certified Vernal Pool
- NHESP Priority Habitat of Rare Species
- NHESP Estimated Habitat of Rare Wildlife

Figure 5

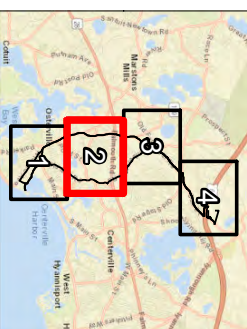
Environmental Constraints



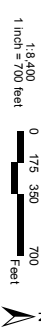
New England Wind 2 Connector Project



LOCUS



SCALE



LEGEND

- Preferred Onshore Transmission Route
- Noticed Alternative Route
- Main Street Variation
- Grid Interconnect Route Option G1
- Grid Interconnect Route Option G2
- Grid Interconnect Route Option G3
- Proposed New Substation Site
- West Barnstable Substation (Existing)
- Article 97 Land
- USGS Perennial Stream
- DEP Hydrologic Connection
- DEP Wetland
- DEP Open Water
- NHESP Certified Vernal Pool
- NHESP Priority Habitat of Rare Species
- NHESP Estimated Habitat of Rare Wildlife

Figure 5

Environmental Constraints

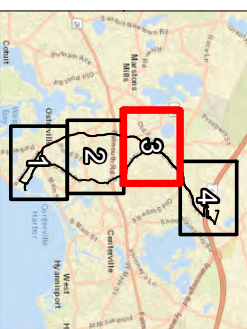


GIS Source: Bureau of Geographic Information (MassGIS), Commonwealth of Massachusetts, Executive Office of Technology and Security Services

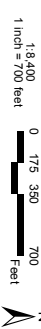
New England Wind 2 Connector Project



LOCUS



SCALE

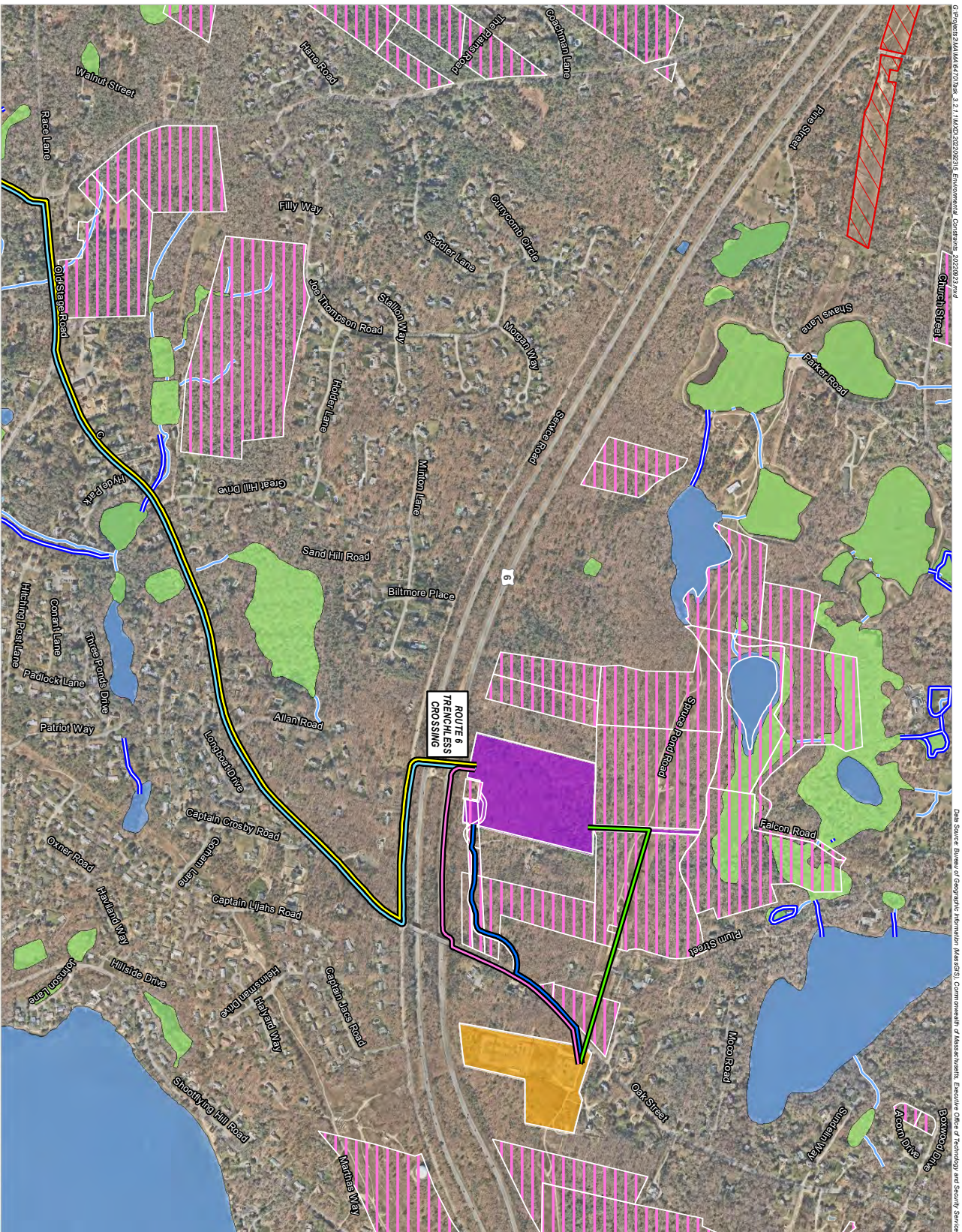


LEGEND

- Preferred Onshore Transmission Route
- Noticed Alternative Route
- Main Street Variation
- Grid Interconnect Route Option G1
- Grid Interconnect Route Option G2
- Grid Interconnect Route Option G3
- Proposed New Substation Site
- West Barnstable Substation (Existing)
- Article 97 Land
- USGS Perennial Stream
- DEP Hydrologic Connection
- DEP Wetland
- DEP Open Water
- DEP Historic High Water Line
- NHEESP Certified Vernal Pool
- NHEESP Priority Habitat of Rare Species
- NHEESP Estimated Habitat of Rare Wildlife

Figure 5

Environmental Constraints

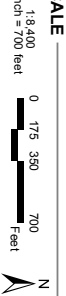
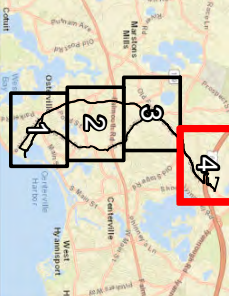


GIS Project: MA/MA/14/01786d_3_1_14/02/2022/2021_Environmental_Constraints_20220222.mxd
 Data Source: Bureau of Geographic Information (MassGIS), Commonwealth of Massachusetts, Esri/Inc, Office of Technology and Security Services

New England Wind 2 Connector Project



LOCUS



LEGEND

- Preferred Onshore Transmission Route
- Noticed Alternative Route
- Main Street Variation
- Grid Interconnect Route Option G1
- Grid Interconnect Route Option G2
- Grid Interconnect Route Option G3
- Proposed New Substation Site
- West Barnstable Substation (Existing)
- Article 97 Land
- USGS Perennial Stream
- DEP Hydrologic Connection
- DEP Wetland
- DEP Open Water
- DEP Historic High Water Line
- NHESP Certified Vernal Pool
- NHESP Priority Habitat of Rare Species
- NHESP Estimated Habitat of Rare Wildlife

Figure 5

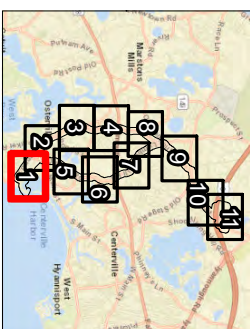
Environmental Constraints



New England Wind 2 Connector Project



LOCUS

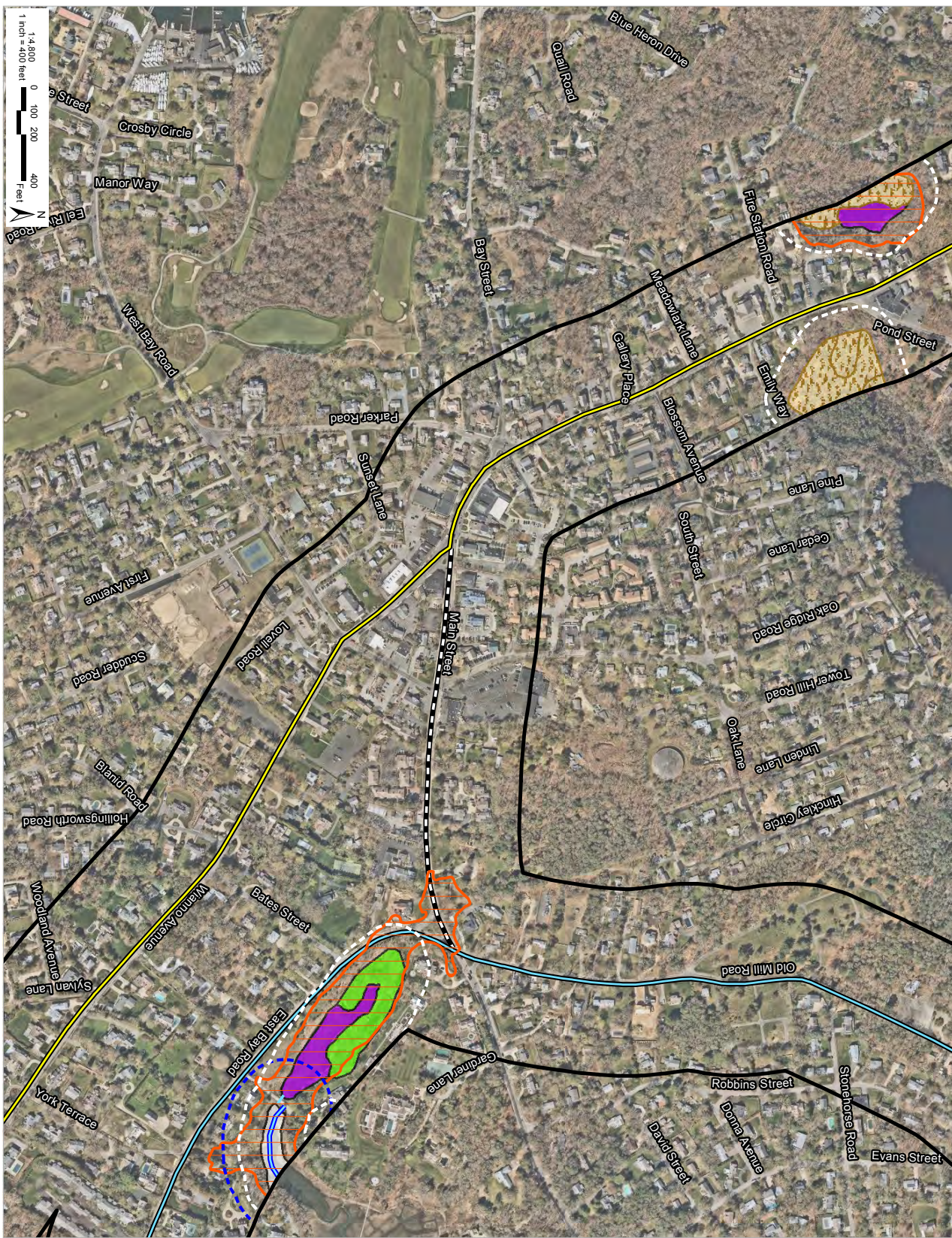


LEGEND

- 400-ft Radius from Project Routes
- Preferred Onshore Transmission Route
- Noticed Alternative Route
- Main Street Variation
- Grid Interconnect Route Option G1
- Grid Interconnect Route Option G2
- Grid Interconnect Route Option G3
- Proposed New Substation Site
- West Barnstable Substation (Existing)
- 100-ft Wetland Buffer Zone
- 200-ft Riverfront Area
- FEMA LSCSF/BLSF
- USGS Perennial Stream
- DEP Hydrologic Connection
- DEP Wetland**
 - Barrier Beach System
 - Barrier Beach - Coastal Beach
 - Barrier Beach - Coastal Dune
 - Barrier Beach - Salt Marsh
 - Bog
 - Coastal Beach
 - Coastal Dune
 - Cranberry Bog
 - Deep Marsh
 - Open Water
 - Salt Marsh
 - Shallow Marsh
 - Strub Swamp
 - Wooded Swamp

Figure 6

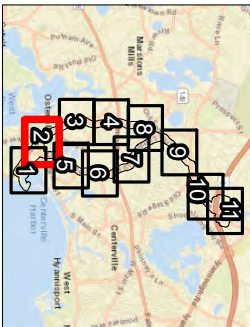
Wetland Resource Areas



New England Wind 2 Connector Project



LOCUS

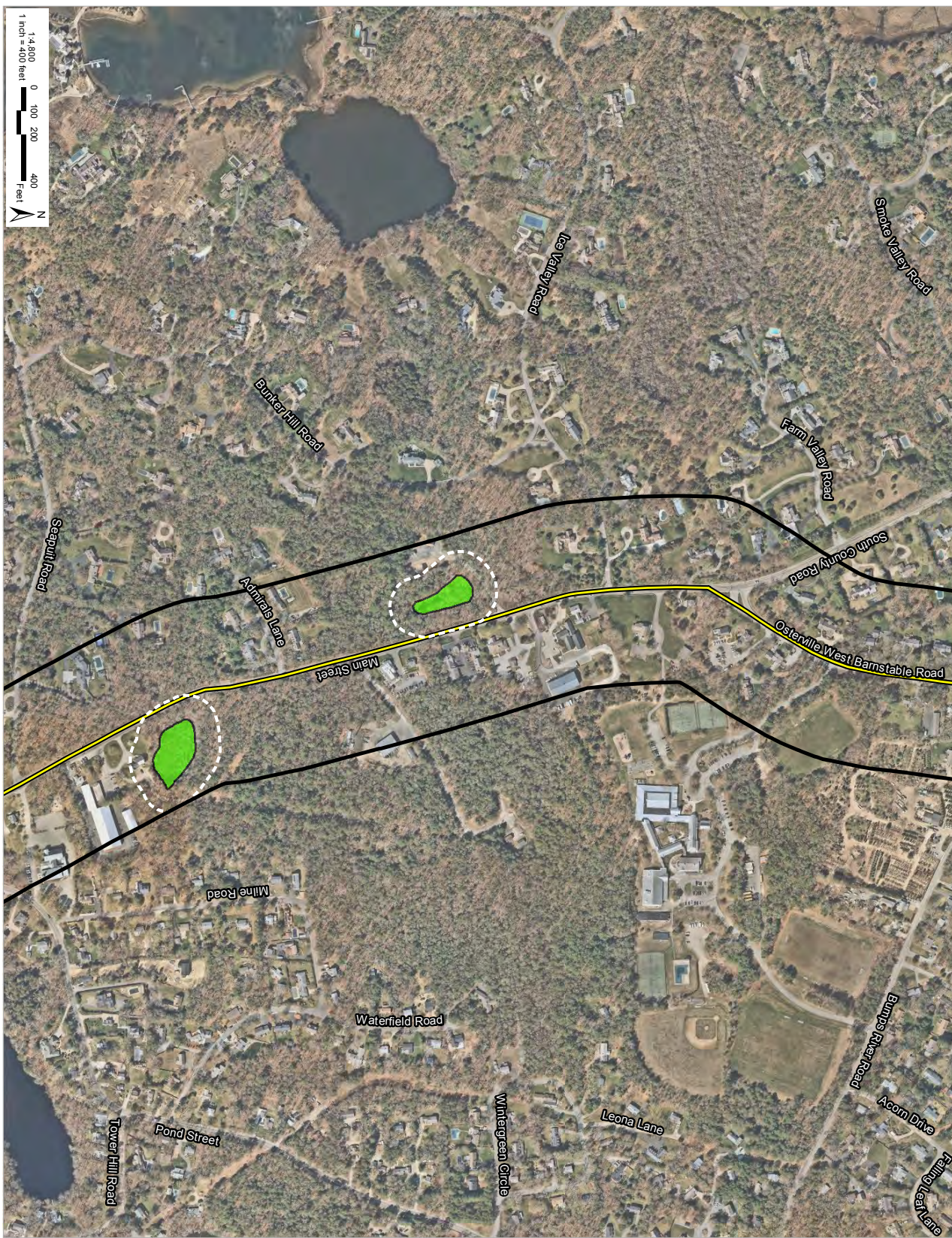


LEGEND

- 400-ft Radius from Project Routes
- Preferred Onshore Transmission Route
- Noticed Alternative Route
- Main Street Variation
- Grid Interconnect Route Option G1
- Grid Interconnect Route Option G2
- Grid Interconnect Route Option G3
- Proposed New Substation Site
- West Barnstable Substation (Existing)
- 100-ft Wetland Buffer Zone
- 200-ft Riverfront Area
- FEMA LSCSF/BLSF
- USGS Perennial Stream
- DEP Hydrologic Connection
- DEP Wetland**
 - Barrier Beach System
 - Barrier Beach - Coastal Beach
 - Barrier Beach - Coastal Dune
 - Barrier Beach - Salt Marsh
 - Bog
 - Coastal Beach
 - Coastal Dune
 - Cranberry Bog
 - Deep Marsh
 - Open Water
 - Salt Marsh
 - Shallow Marsh
 - Shrub Swamp
 - Wooded Swamp

Figure 6

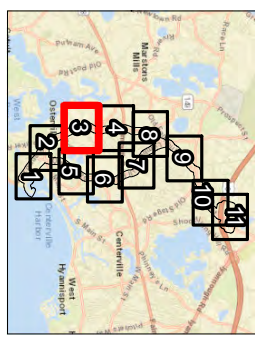
Wetland Resource Areas



New England Wind 2 Connector Project



LOCUS

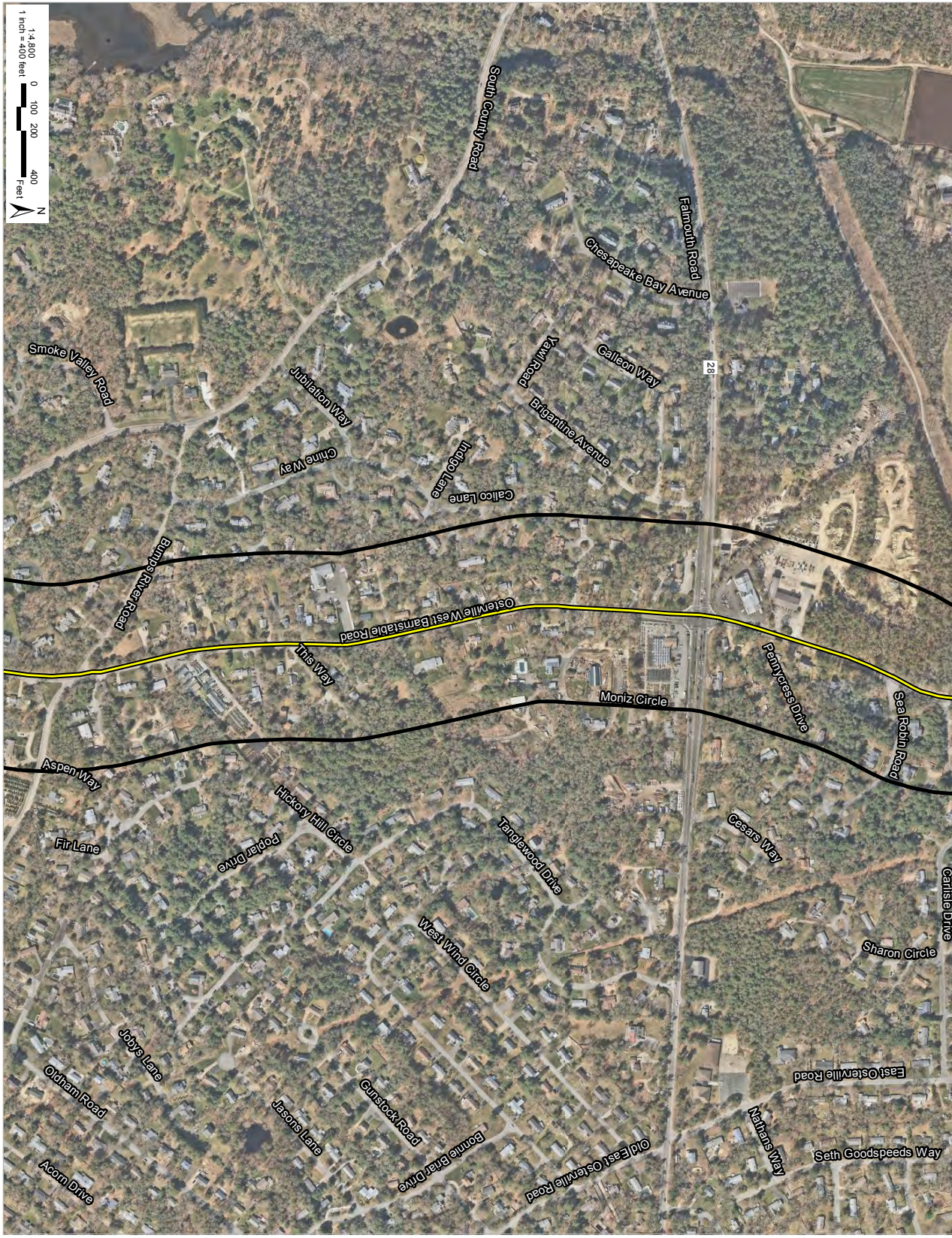


LEGEND

- 400-ft Radius from Project Routes
- Preferred Onshore Transmission Route
- Noticed Alternative Route
- Main Street Variation
- Grid Interconnect Route Option G1
- Grid Interconnect Route Option G2
- Grid Interconnect Route Option G3
- Proposed New Substation Site
- West Barnstable Substation (Existing)
- 100-ft Wetland Buffer Zone
- 200-ft Riverfront Area
- FEMA LSCSF/BLSF
- USGS Perennial Stream
- DEP Hydrologic Connection
- DEP Wetland**
 - Barrier Beach System
 - Barrier Beach - Coastal Beach
 - Barrier Beach - Coastal Dune
 - Barrier Beach - Salt Marsh
 - Bog
 - Coastal Beach
 - Coastal Dune
 - Cranberry Bog
 - Deep Marsh
 - Open Water
 - Salt Marsh
 - Shallow Marsh
 - Strub Swamp
 - Wooded Swamp

Figure 6

Wetland Resource Areas



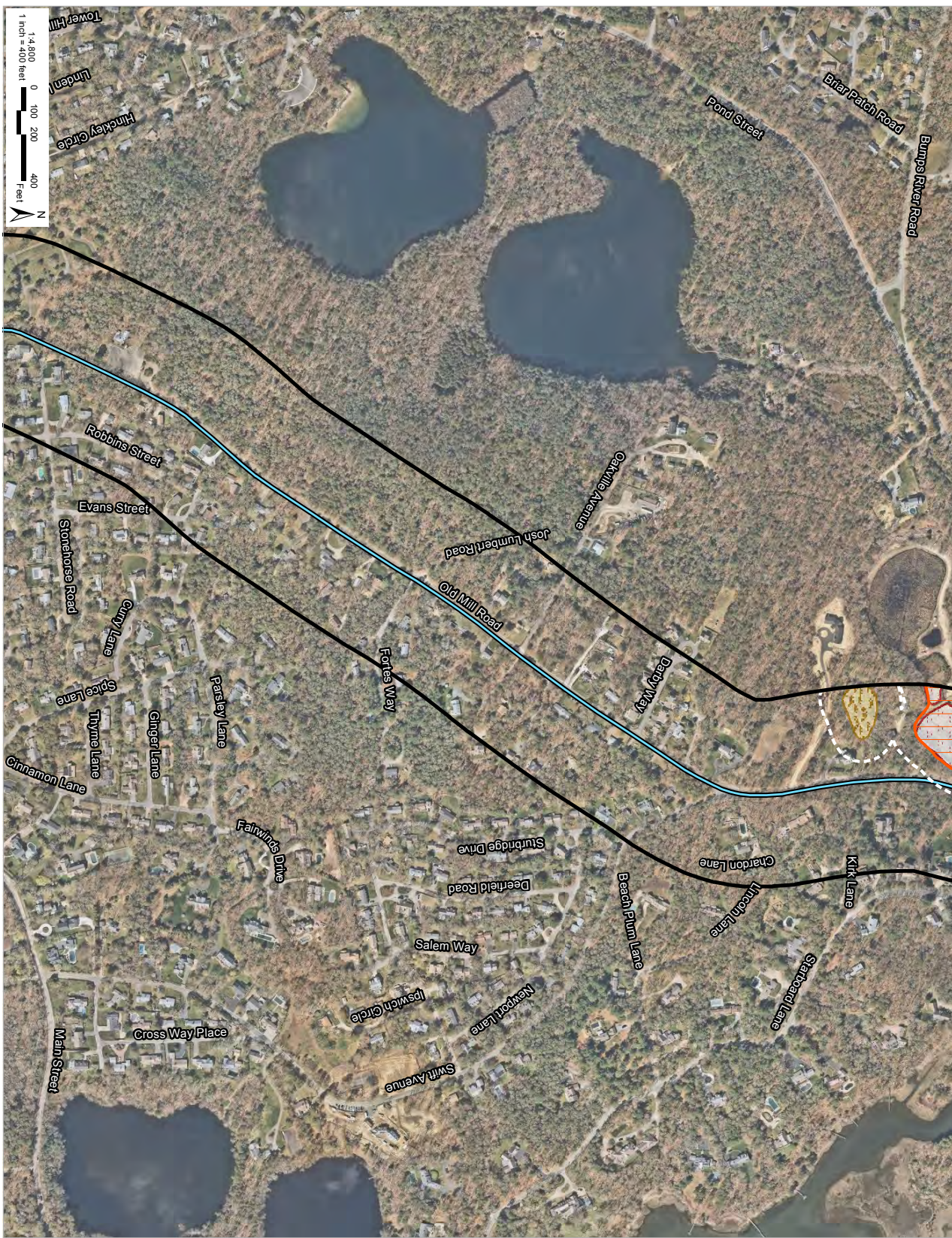
New England Wind 2 Connector Project

LOCUS

LEGEND

- 400-ft Radius from Project Routes
- Preferred Onshore Transmission Route
- Noticed Alternative Route
- Main Street Variation
- Grid Interconnect Route Option G1
- Grid Interconnect Route Option G2
- Grid Interconnect Route Option G3
- Proposed New Substation Site
- West Barnstable Substation (Existing)
- 100-ft Wetland Buffer Zone
- 200-ft Riverfront Area
- FEMA LSCSF/BLSF
- USGS Perennial Stream
- DEP Hydrologic Connection
- DEP Wetland
 - Barrier Beach System
 - Barrier Beach - Coastal Beach
 - Barrier Beach - Coastal Dune
 - Barrier Beach - Salt Marsh
 - Bog
 - Coastal Beach
 - Coastal Dune
 - Crabmeat Bog
 - Deep Marsh
 - Open Water
 - Salt Marsh
 - Shallow Marsh
 - Strub Swamp
 - Wooded Swamp

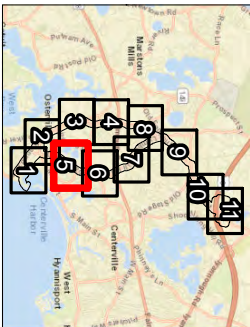
Figure 6
Wetland Resource Areas
Sheet 4 of 11



New England Wind 2 Connector Project



LOCUS

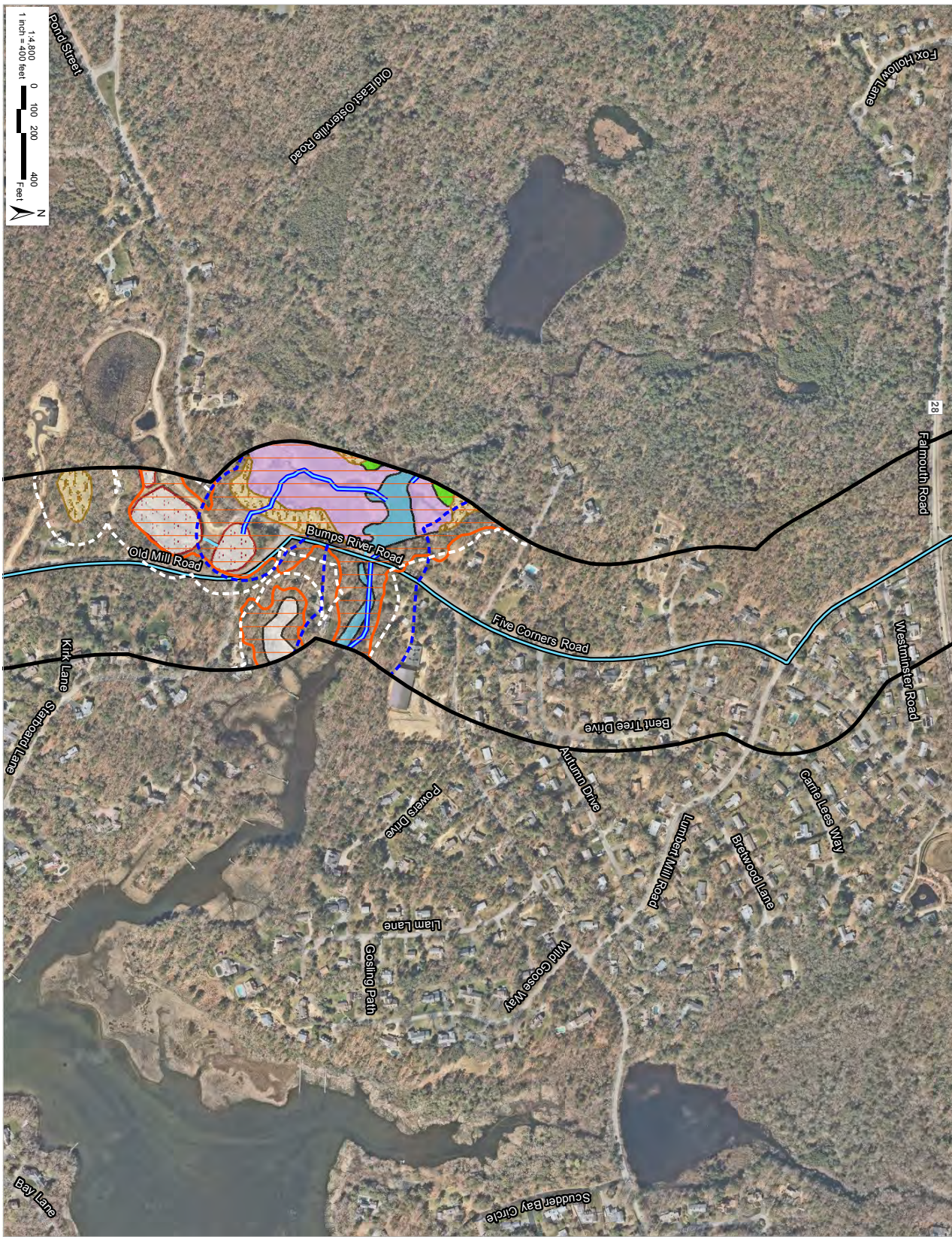


LEGEND

- 400-ft Radius from Project Routes
- Preferred Onshore Transmission Route
- Noticed Alternative Route
- Main Street Variation
- Grid Interconnect Route Option G1
- Grid Interconnect Route Option G2
- Grid Interconnect Route Option G3
- Proposed New Substation Site
- West Barnstable Substation (Existing)
- 100-ft Wetland Buffer Zone
- 200-ft Riverfront Area
- FEMA LSCSF/BLSF
- USGS Perennial Stream
- DEP Hydrologic Connection
- DEP Wetland
- Barrier Beach System
- Barrier Beach - Coastal Beach
- Barrier Beach - Coastal Dune
- Barrier Beach - Salt Marsh
- Bog
- Coastal Beach
- Coastal Dune
- Cranberry Bog
- Deep Marsh
- Open Water
- Salt Marsh
- Shallow Marsh
- Shrub Swamp
- Wooded Swamp

Figure 6

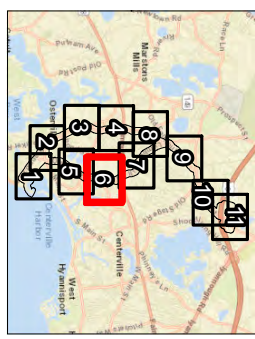
Wetland Resource Areas



New England Wind 2 Connector Project



LOCUS

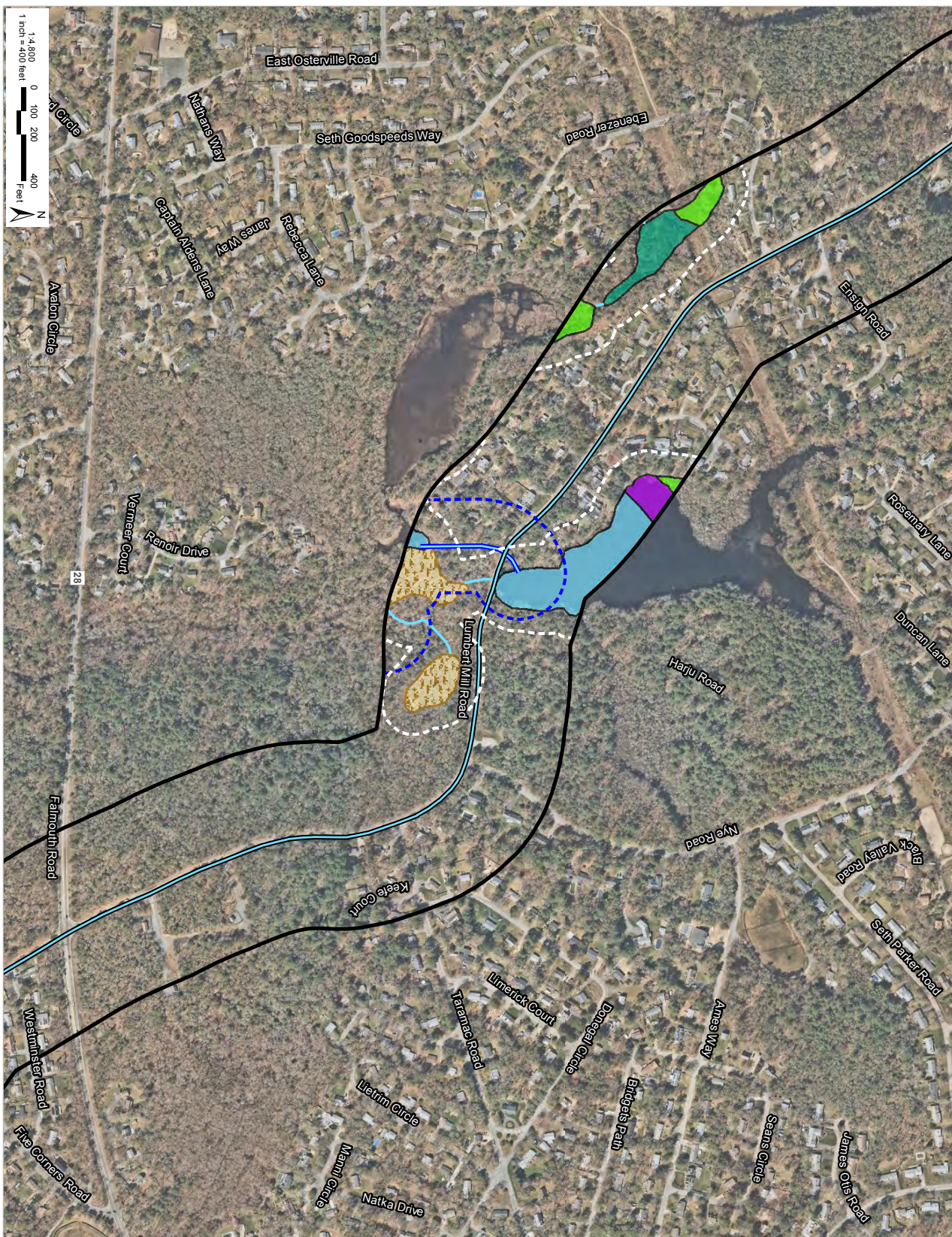


LEGEND

- 400-ft Radius from Project Routes
- Preferred Onshore Transmission Route
- Noticed Alternative Route
- Main Street Variation
- Grid Interconnect Route Option G1
- Grid Interconnect Route Option G2
- Grid Interconnect Route Option G3
- Proposed New Substation Site
- West Barnstable Substation (Existing)
- 100-ft Wetland Buffer Zone
- 200-ft Riverfront Area
- FEMA LSCSF/BLSF
- USGS Perennial Stream
- DEP Hydrologic Connection
- DEP Wetland**
 - Barrier Beach System
 - Barrier Beach - Coastal Beach
 - Barrier Beach - Coastal Dune
 - Barrier Beach - Salt Marsh
 - Bog
 - Coastal Beach
 - Coastal Dune
 - Cranberry Bog
 - Deep Marsh
 - Open Water
 - Salt Marsh
 - Shallow Marsh
 - Strub Swamp
 - Wooded Swamp

Figure 6

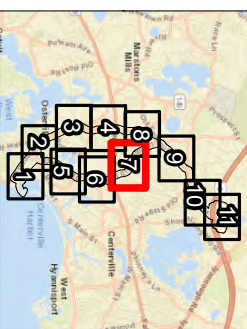
Wetland Resource Areas



New England Wind 2 Connector Project



LOCUS

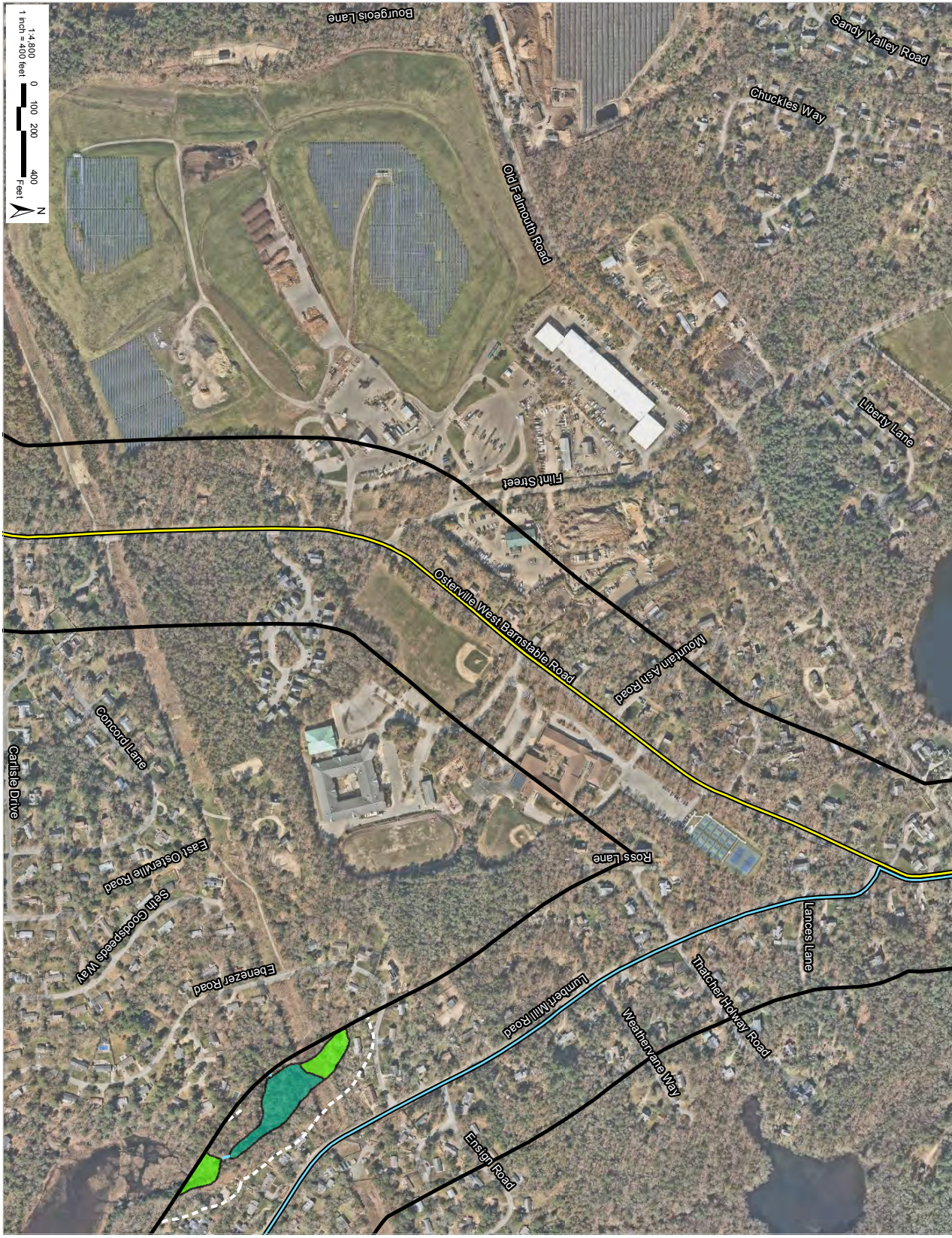


LEGEND

- 400-ft Radius from Project Routes
- Preferred Onshore Transmission Route
- Noticed Alternative Route
- Main Street Variation
- Grid Interconnect Route Option G1
- Grid Interconnect Route Option G2
- Grid Interconnect Route Option G3
- Proposed New Substation Site
- West Barnstable Substation (Existing)
- 100-ft Wetland Buffer Zone
- 200-ft Riverfront Area
- FEMA LSCSF/BLSF
- USGS Perennial Stream
- DEP Hydrologic Connection
- DEP Wetland**
 - Barrier Beach System
 - Barrier Beach - Coastal Beach
 - Barrier Beach - Coastal Dune
 - Barrier Beach - Salt Marsh
 - Bog
 - Coastal Beach
 - Coastal Dune
 - Cranberry Bog
 - Deep Marsh
 - Open Water
 - Salt Marsh
 - Shallow Marsh
 - Shrub Swamp
 - Wooded Swamp

Figure 6

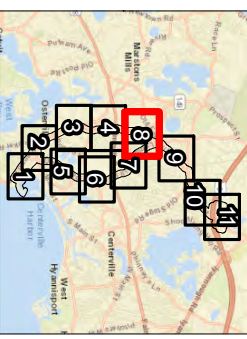
Wetland Resource Areas



New England Wind 2 Connector Project



LOCUS

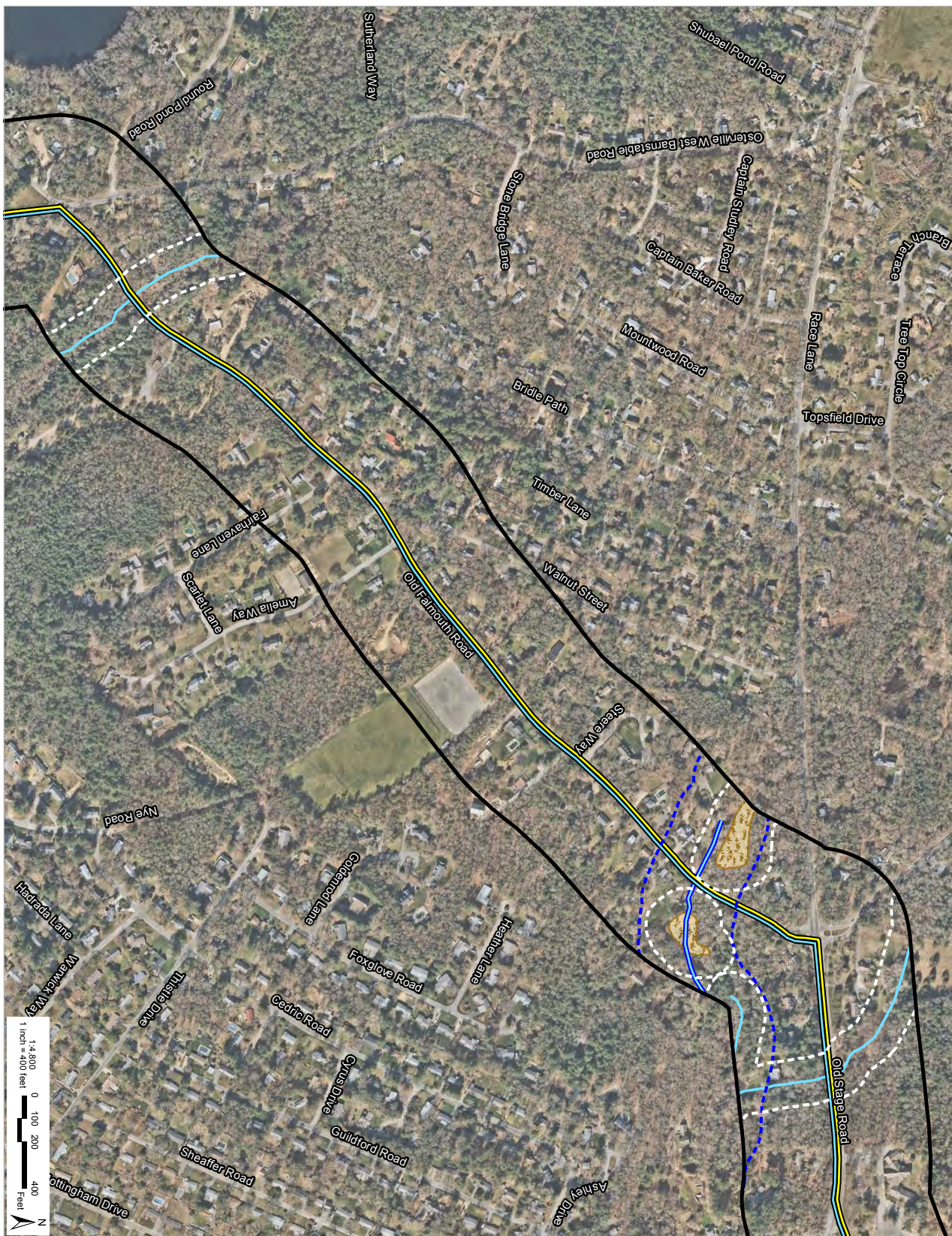


LEGEND

- 400-ft Radius from Project Routes
- Preferred Onshore Transmission Route
- Noticed Alternative Route
- Main Street Variation
- Grid Interconnect Route Option G1
- Grid Interconnect Route Option G2
- Grid Interconnect Route Option G3
- Proposed New Substation Site
- West Barnstable Substation (Existing)
- 100-ft Wetland Buffer Zone
- 200-ft Riverfront Area
- FEMA LSCSF/BLSF
- USGS Perennial Stream
- DEP Hydrologic Connection
- DEP Wetland
- Barrier Beach System
- Barrier Beach - Coastal Beach
- Barrier Beach - Coastal Dune
- Barrier Beach - Salt Marsh
- Bog
- Coastal Beach
- Coastal Dune
- Cranberry Bog
- Deep Marsh
- Open Water
- Salt Marsh
- Shallow Marsh
- Strub Swamp
- Wooded Swamp

Figure 6

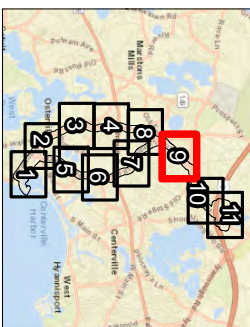
Wetland Resource Areas



New England Wind 2 Connector Project



LOCUS

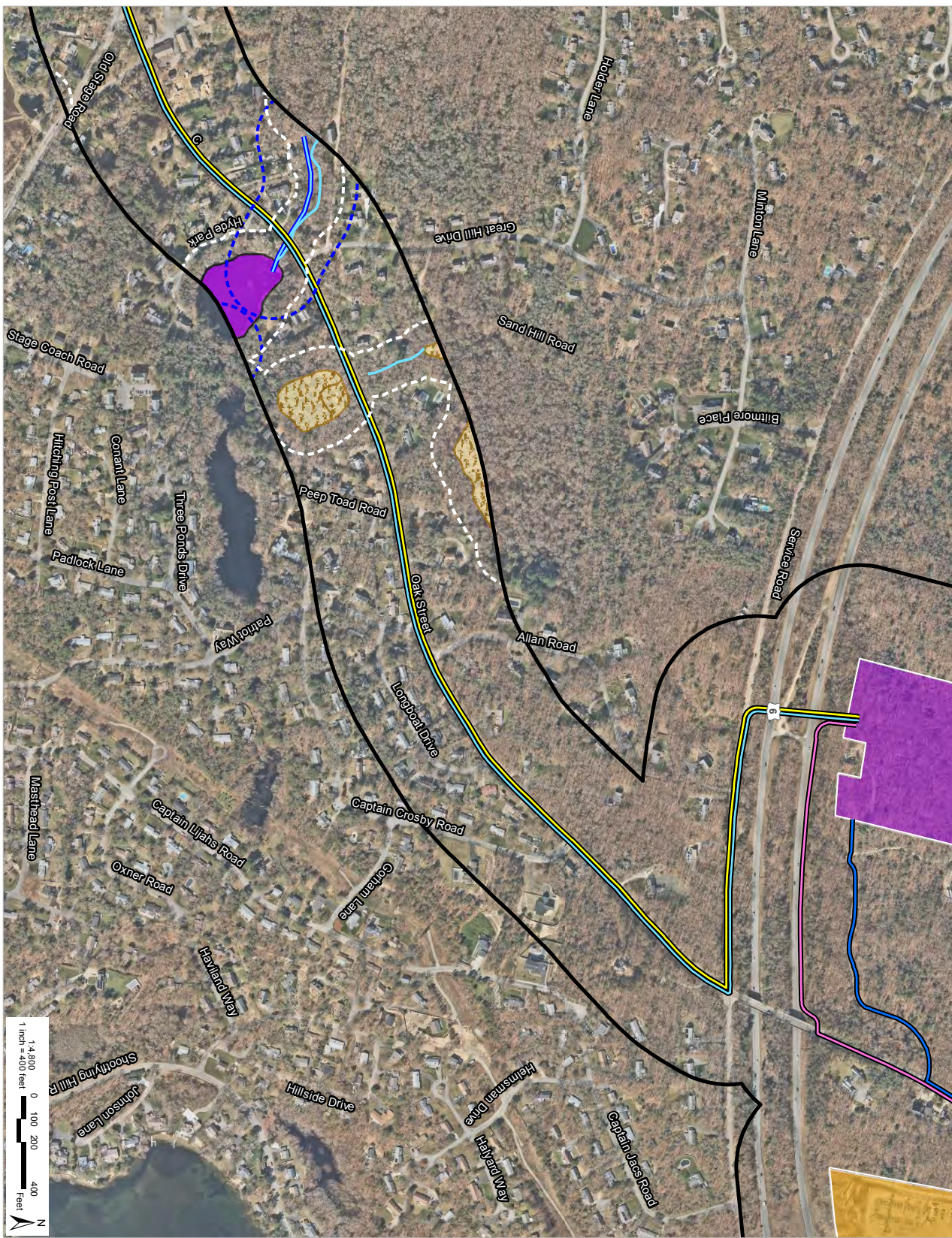


LEGEND

- 400-ft Radius from Project Routes
- Preferred Onshore Transmission Route
- Noticed Alternative Route
- Main Street Variation
- Grid Interconnect Route Option G1
- Grid Interconnect Route Option G2
- Grid Interconnect Route Option G3
- Proposed New Substation Site
- West Barnstable Substation (Existing)
- 100-ft Wetland Buffer Zone
- 200-ft Riverfront Area
- FEMA LSCSF/BLSF
- USGS Perennial Stream
- DEP Hydrologic Connection
- DEP Wetland**
 - Barrier Beach System
 - Barrier Beach - Coastal Beach
 - Barrier Beach - Coastal Dune
 - Barrier Beach - Salt Marsh
 - Bog
 - Coastal Beach
 - Coastal Dune
 - Cranberry Bog
 - Deep Marsh
 - Open Water
 - Salt Marsh
 - Shallow Marsh
 - Strub Swamp
 - Wooded Swamp

Figure 6

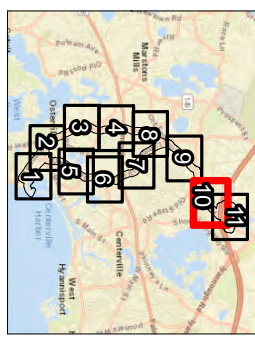
Wetland Resource Areas



New England Wind 2 Connector Project



LOCUS

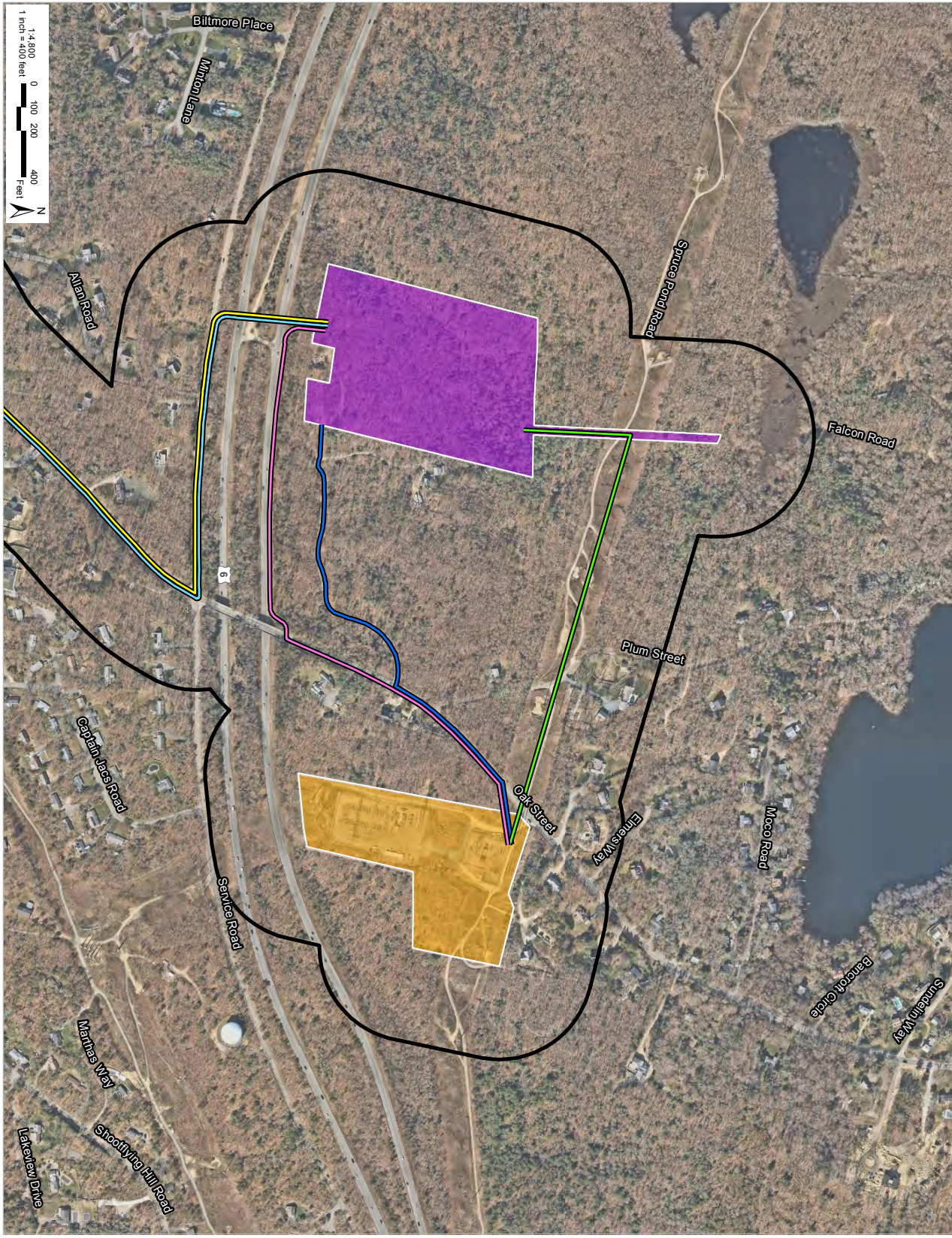


LEGEND

- 400-ft Radius from Project Routes
- Preferred Onshore Transmission Route
- Noticed Alternative Route
- Main Street Variation
- Grid Interconnect Route Option G1
- Grid Interconnect Route Option G2
- Grid Interconnect Route Option G3
- Proposed New Substation Site
- West Barnstable Substation (Existing)
- 100-ft Wetland Buffer Zone
- 200-ft Riverfront Area
- FEMA LSCSF/BLSF
- USGS Perennial Stream
- DEP Hydrologic Connection
- DEP Wetland
- Barrier Beach System
- Barrier Beach - Coastal Beach
- Barrier Beach - Coastal Dune
- Barrier Beach - Salt Marsh
- Bog
- Coastal Beach
- Coastal Dune
- Cranberry Bog
- Deep Marsh
- Open Water
- Salt Marsh
- Shallow Marsh
- Shrub Swamp
- Wooded Swamp

Figure 6

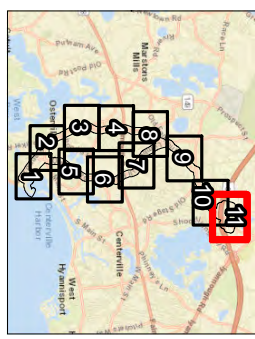
Wetland Resource Areas



New England Wind 2 Connector Project



LOCUS

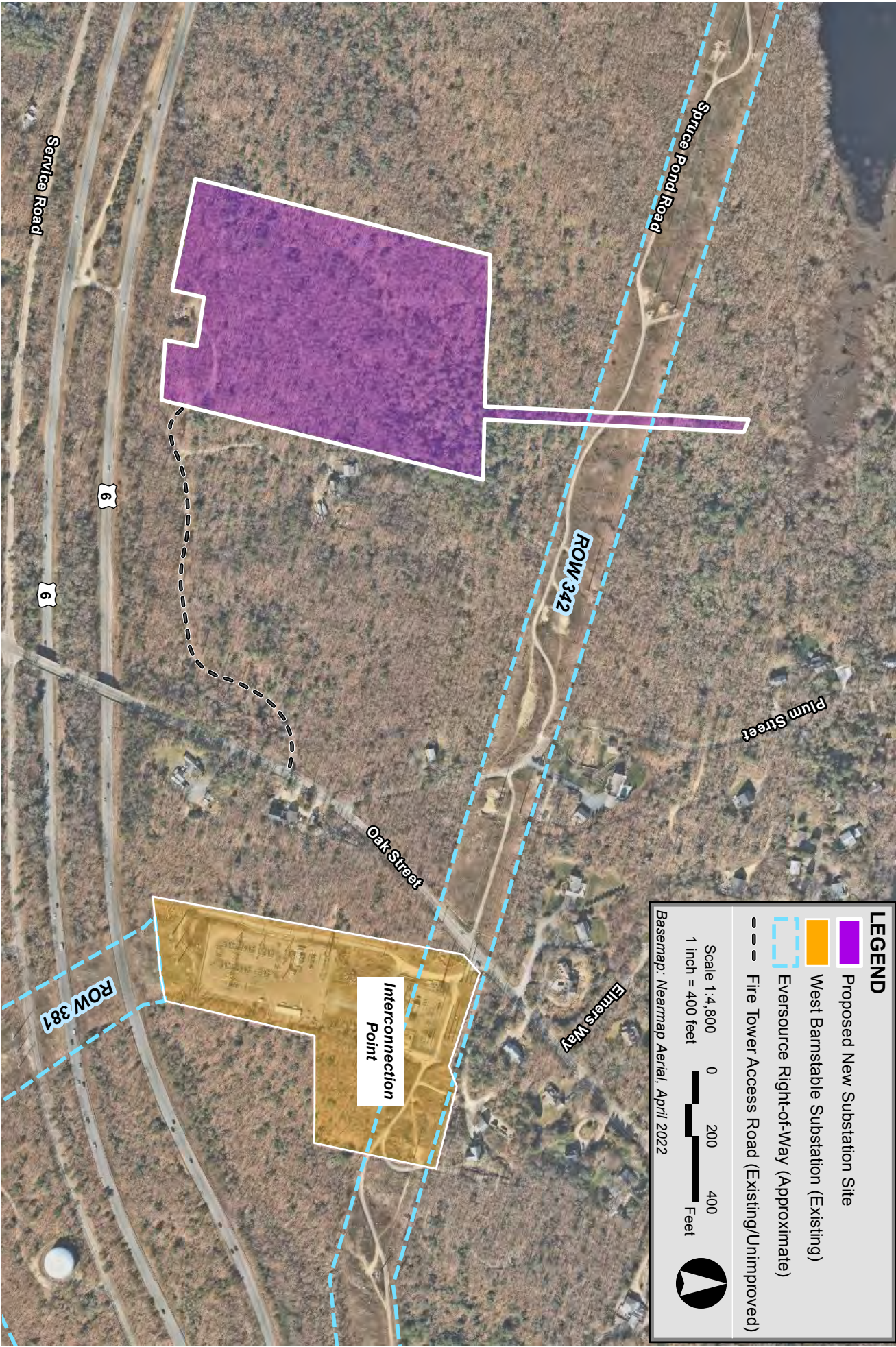


LEGEND

- 400-ft Radius from Project Routes
- Preferred Onshore Transmission Route
- Noticed Alternative Route
- Main Street Variation
- Grid Interconnect Route Option G1
- Grid Interconnect Route Option G2
- Grid Interconnect Route Option G3
- Proposed New Substation Site
- West Barnstable Substation (Existing)
- 100-ft Wetland Buffer Zone
- 200-ft Riverfront Area
- FEMA LSCSF/BLSF
- USGS Perennial Stream
- DEP Hydrologic Connection
- DEP Wetland**
 - Barrier Beach System
 - Barrier Beach - Coastal Beach
 - Barrier Beach - Coastal Dune
 - Barrier Beach - Salt Marsh
 - Bog
 - Coastal Beach
 - Coastal Dune
 - Cranberry Bog
 - Deep Marsh
 - Open Water
 - Salt Marsh
 - Shallow Marsh
 - Shrub Swamp
 - Wooded Swamp

Figure 6

Wetland Resource Areas



LEGEND

- Proposed New Substation Site
- West Barnstable Substation (Existing)
- Eversource Right-of-Way (Approximate)
- Fire Tower Access Road (Existing/Unimproved)

Scale 1:4,800
1 inch = 400 feet

0 200 400 Feet

Basemap: Neermap Aerial, April 2022

New England Wind 2 Connector Project



Figure 7
Proposed New Substation Site - Aerial Locus

LEGEND

- Preferred Onshore Transmission Route
- Noticed Alternative Route
- Main Street Variation
- Grid Interconnect Route Option G1
- Grid Interconnect Route Option G2
- Grid Interconnect Route Option G3
- Proposed New Substation Site
- West Barnstable Substation (Existing)

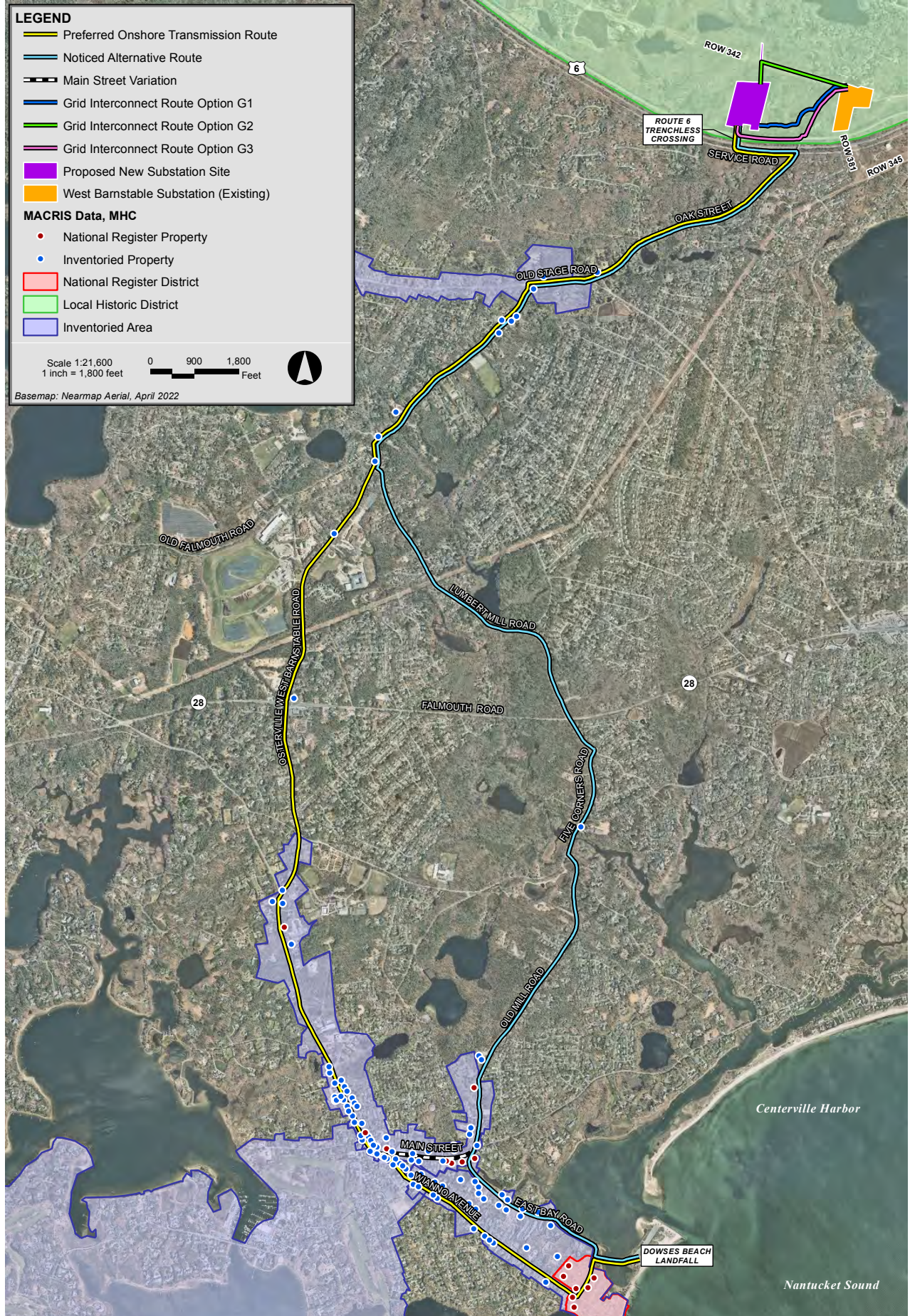
MACRIS Data, MHC

- National Register Property
- Inventoried Property
- National Register District
- Local Historic District
- Inventoried Area

Scale 1:21,600
1 inch = 1,800 feet




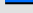
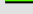






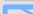


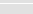
0 900 1,800 Feet

Basemap: Nearmap Aerial, April 2022



New England Wind 2 Connector Project

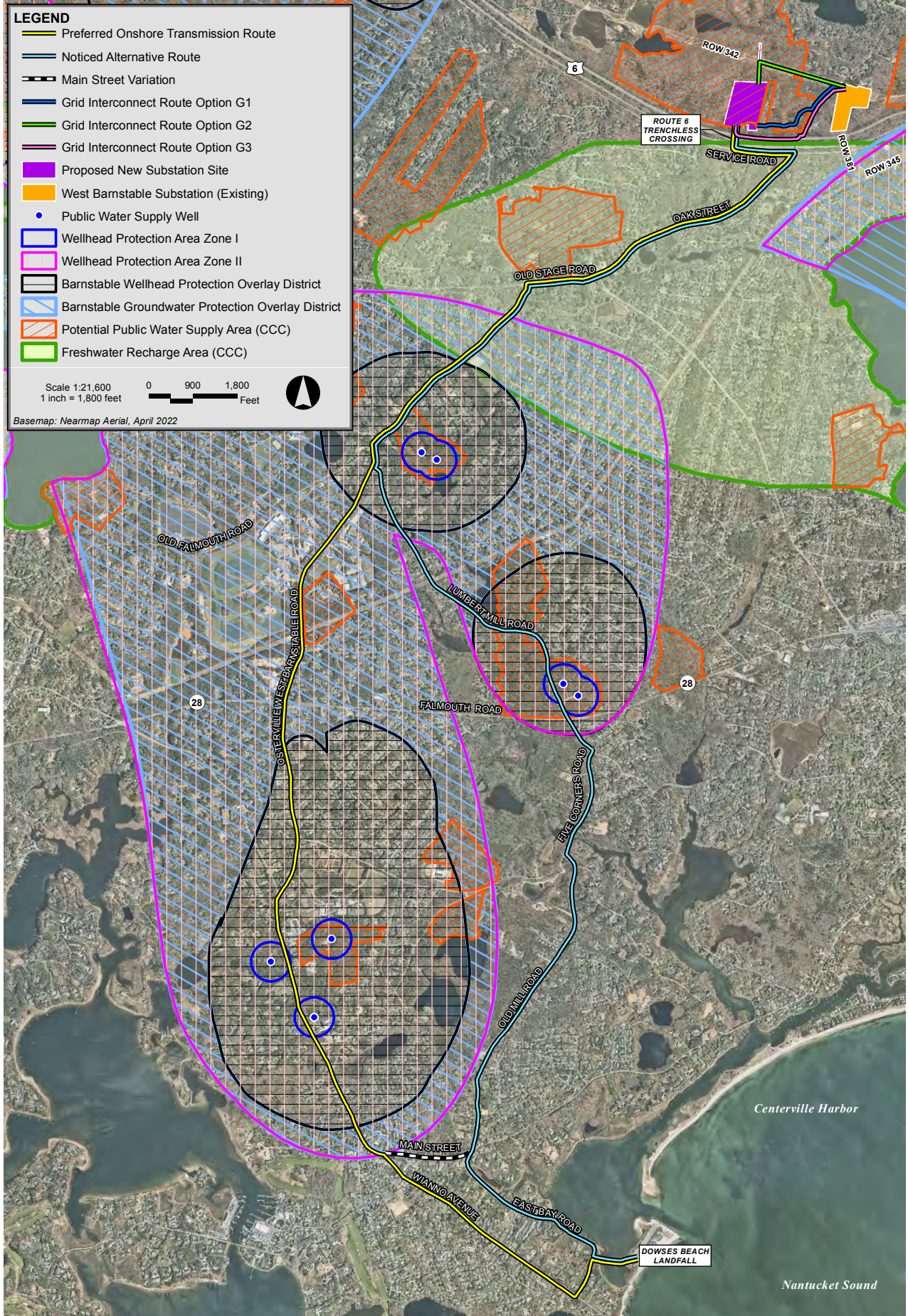
LEGEND

-  Preferred Onshore Transmission Route
-  Noticed Alternative Route
-  Main Street Variation
-  Grid Interconnect Route Option G1
-  Grid Interconnect Route Option G2
-  Grid Interconnect Route Option G3
-  Proposed New Substation Site
-  West Barnstable Substation (Existing)
-  Public Water Supply Well
-  Wellhead Protection Area Zone I
-  Wellhead Protection Area Zone II
-  Barnstable Wellhead Protection Overlay District
-  Barnstable Groundwater Protection Overlay District
-  Potential Public Water Supply Area (CCC)
-  Freshwater Recharge Area (CCC)

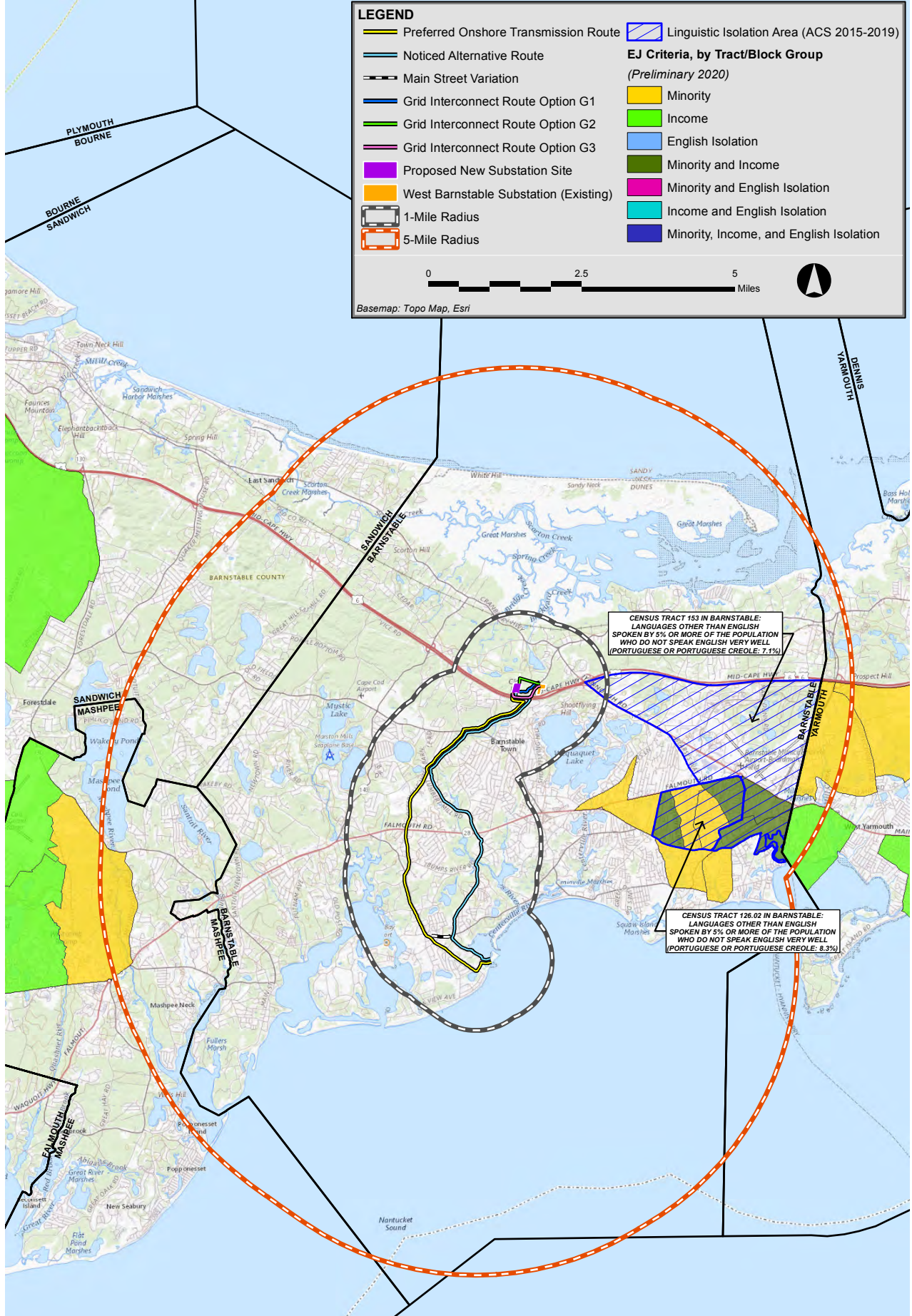
Scale 1:21,600
1 inch = 1,800 feet

0 900 1,800 Feet

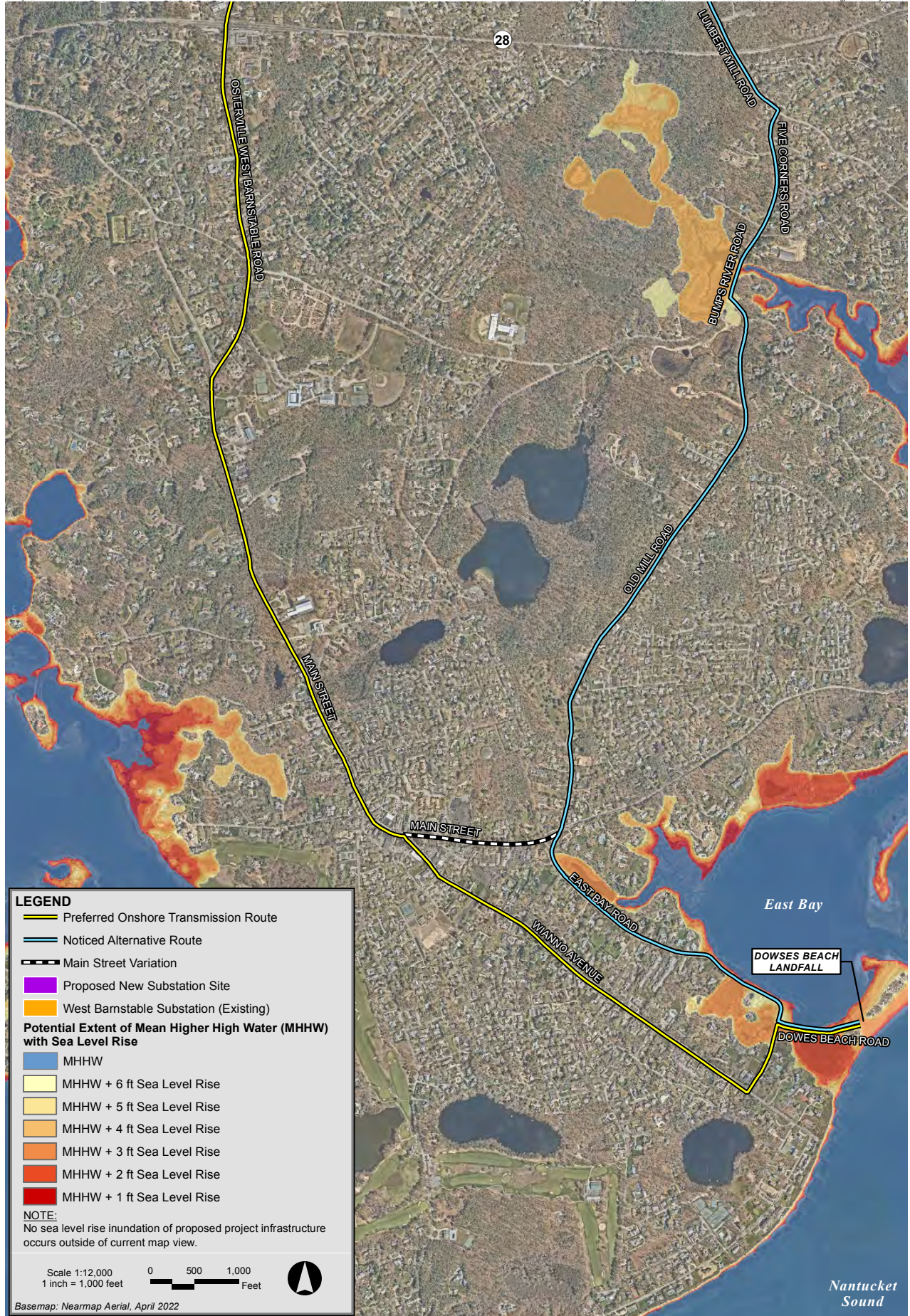
Basemap: Nearmap Aerial, April 2022



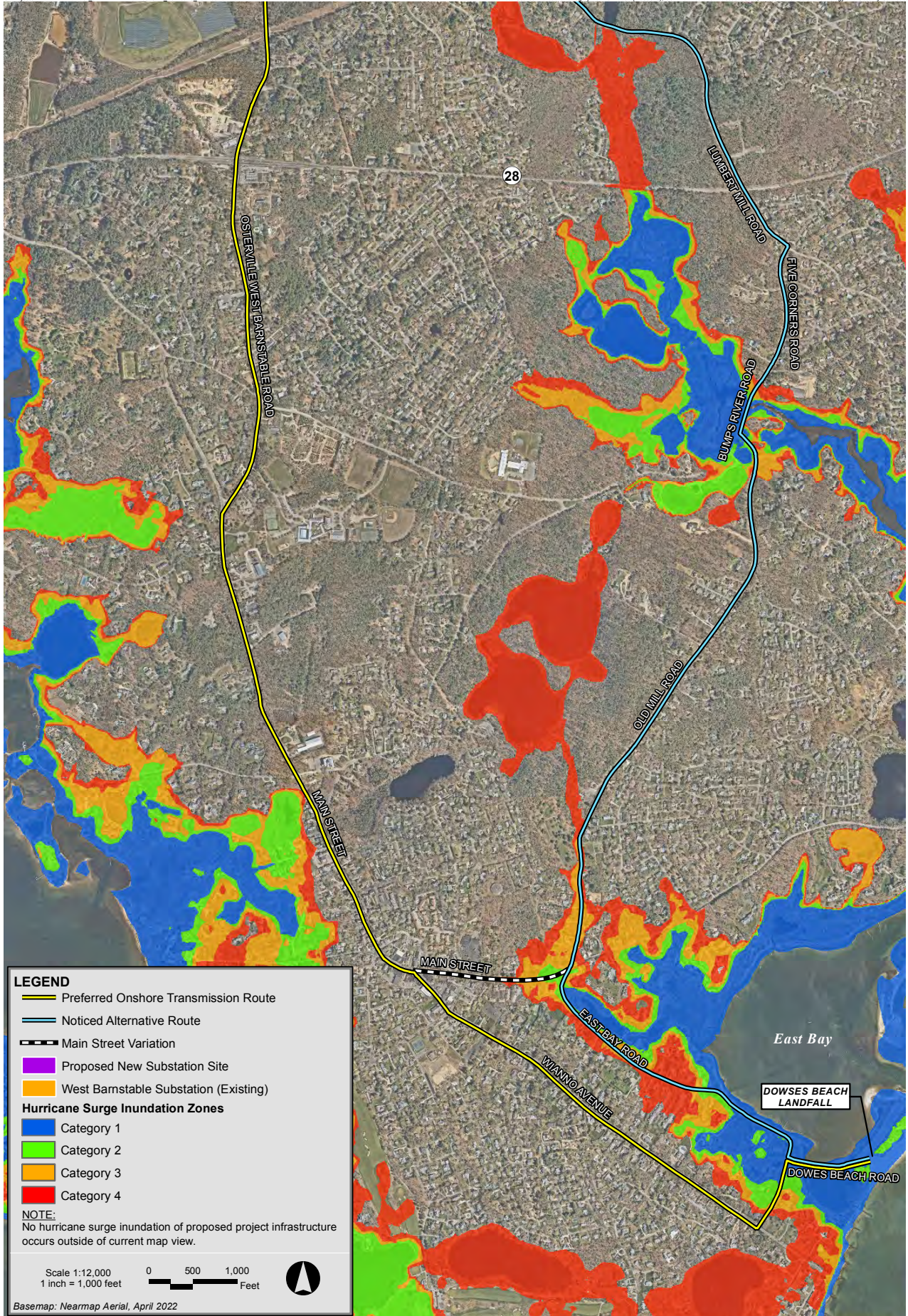
New England Wind 2 Connector Project



New England Wind 2 Connector Project



New England Wind 2 Connector Project



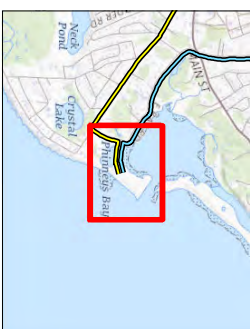
New England Wind 2 Connector Project



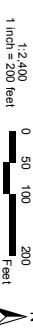
New England Wind 2 Connector Project



LOCUS



SCALE



LEGEND

- Preferred Onshore Transmission Route
- Noticed Alternative Route
- Historic High Water Shoreline
- 1846
- 1890
- 1938
- 1978
- 1994
- 2009

Figure 13A
Historic High Water Shorelines
(1800s-2009, USGS, MassCZM)
at Doves Beach Landfill Site

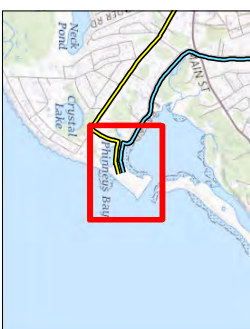


Nantucket Sound
Centerville Harbor
Nearmap Aerial, September 2022

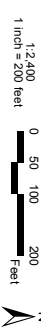
New England Wind 2 Connector Project



LOCUS



SCALE



LEGEND

- Preferred Onshore Transmission Route
- Noticed Alternative Route
- Short-Term Shoreline Change**
Rate of Change Transsect (meters/year)
- 0.3 or more
- 0.3 to -0.1
- 0.1 to 0.1
- 0.1 - 0.3
- 0.3 or more

Figure 13B
Short-Term Shoreline Change Rate
(1800s - 2009, USGS, MassCZM)
at Doves Beach Landfill Site

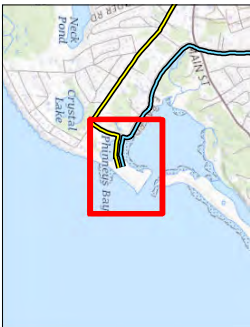


Naemap Aerial, September 2022

New England Wind 2 Connector Project



LOCUS



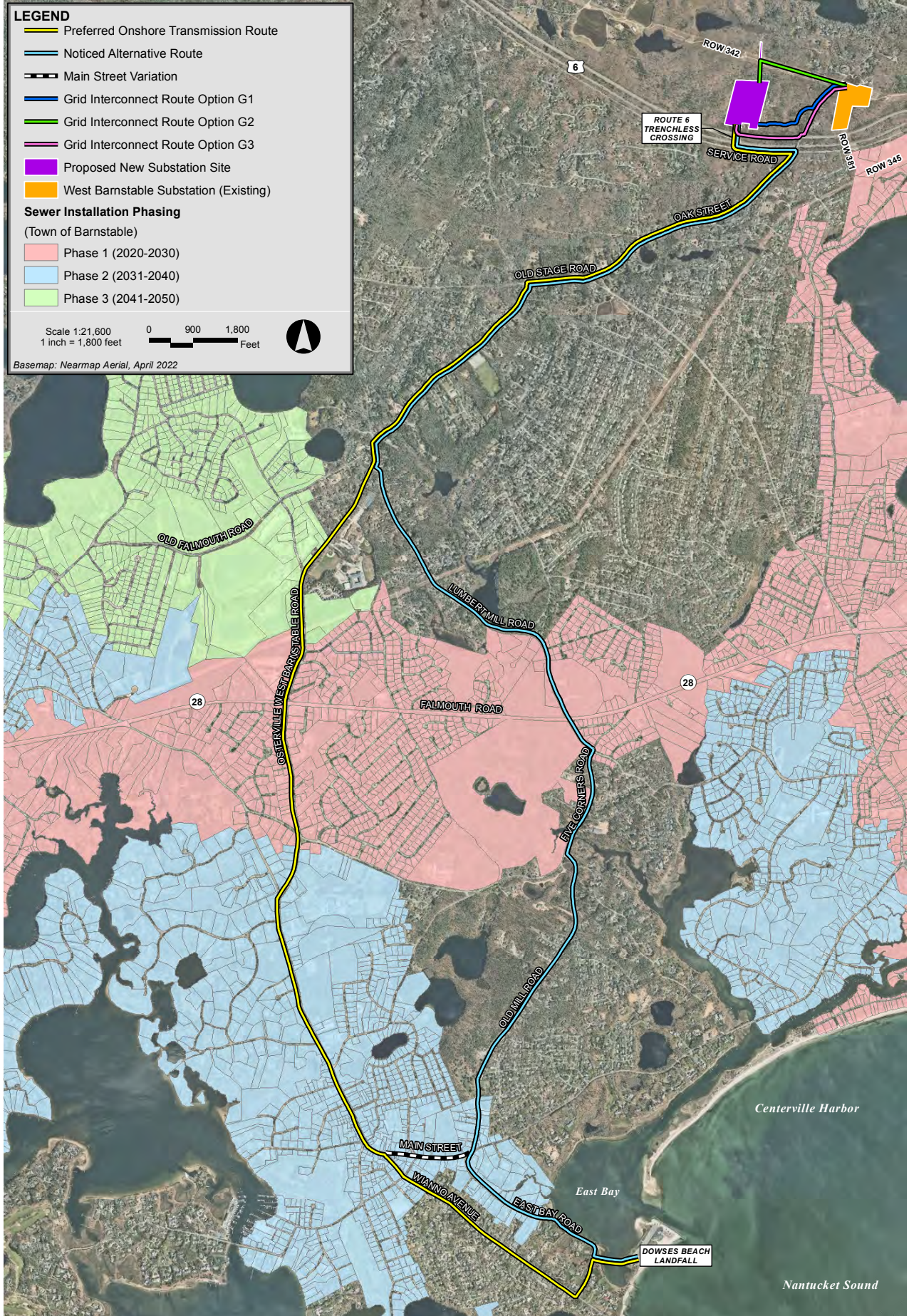
SCALE



LEGEND

- Preferred Onshore Transmission Route
- Noticed Alternative Route
- Long-Term Shoreline Change**
Rate of Change Transsect (meters/year)
- 0.3 or more
- 0.3 to -0.1
- 0.1 to 0.1
- 0.1 - 0.3
- 0.3 or more

Figure 13C
Long-Term Shoreline Change Rate
(1800s-2009, USGS, MassCZM)
at Dowses Beach Landfall Site



New England Wind 2 Connector Project

LEGEND

- Potential Landfall Site
- Proposed New Substation Site
- West Barnstable Substation (Existing)

Scale 1:36,000
1 inch = 3,000 feet

0 1,500 3,000 Feet

Basemap: Maxar Aerial, 2021



Potential Landfall Site	Name
A	Loop Beach
B	Cotuit Landing
C	Prince Cove
D	Dowses Beach
E	East Bay Boat Ramp
F	Dan McCarthy Landing
G	Craigville Beach
H	Covell's Beach
I	Wianno Avenue

New England Wind 2 Connector Project

LEGEND

- Proposed New Substation Site
- West Barnstable Substation (Existing)

Candidate Route
(Length in Miles: Landfall to New Substation)

- T1 (6.6)
- T2 (6.7)
- T3 (6.6)
- T4 (7.0)
- T5 (8.3)
- T6 (6.7)
- T7 (7.3)

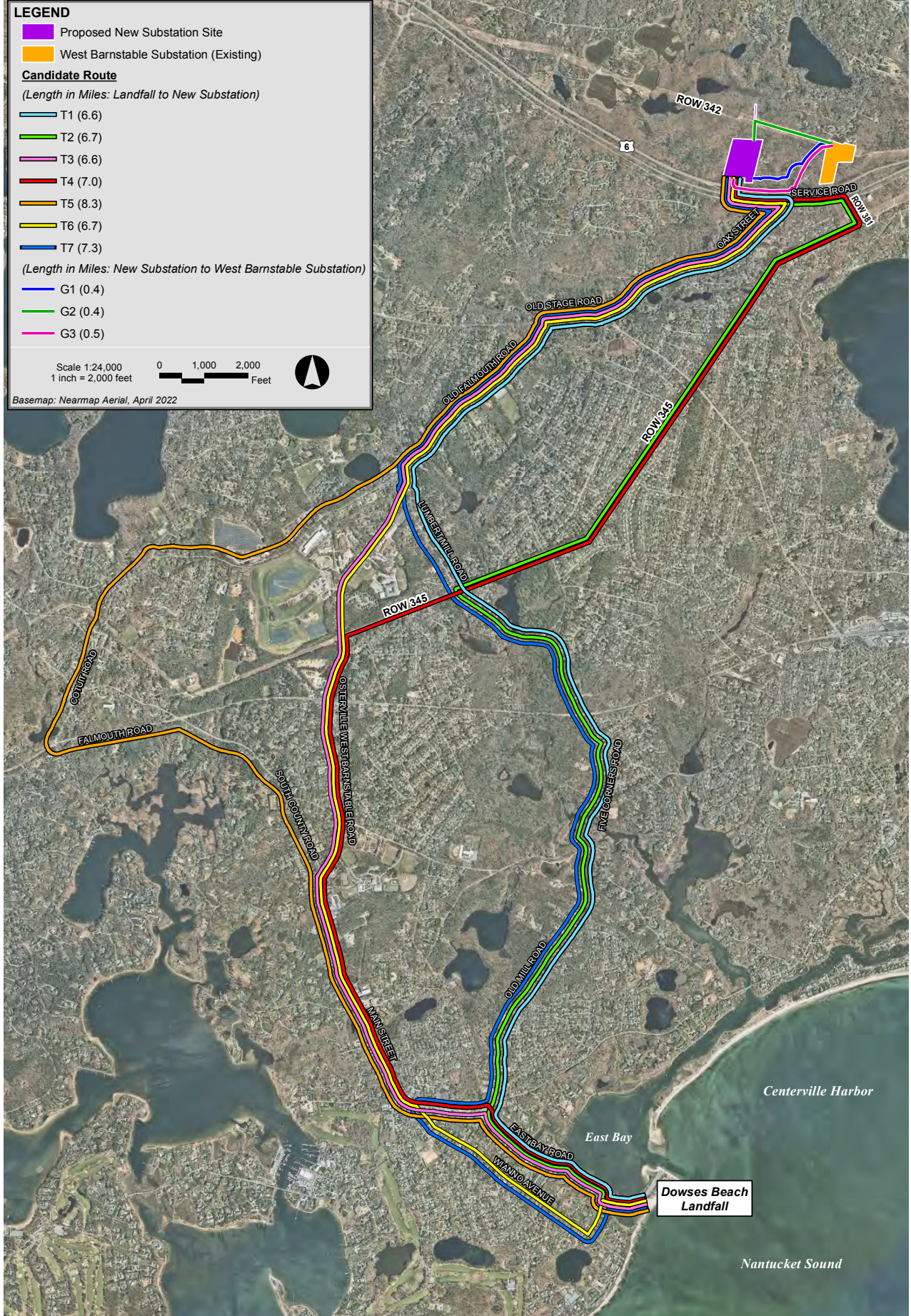
(Length in Miles: New Substation to West Barnstable Substation)

- G1 (0.4)
- G2 (0.4)
- G3 (0.5)

Scale 1:24,000
1 inch = 2,000 feet

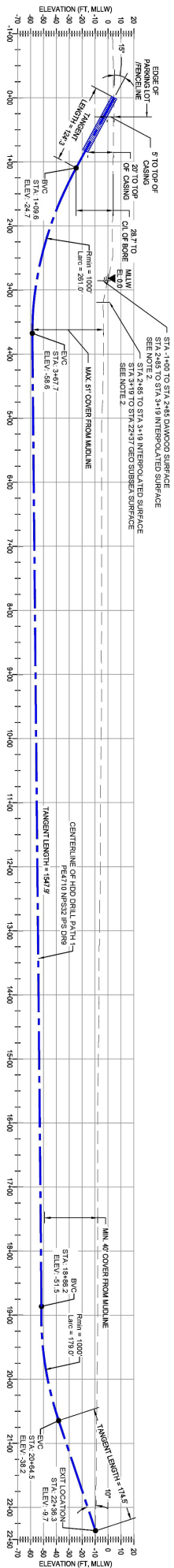
0 1,000 2,000 Feet

Basemap: Nearmap Aerial, April 2022



New England Wind 2 Connector Project

Source: New England Wind 2 Connector Doveses Beach Landing HDD Landfall Drill Paths Plan Set, Santee, 09/21/2022



New England Wind 2 Connector Project



Figure 17
Typical Horizontal Direction Drill Trajectory Profile at Doveses Beach Landfall Site