



New England Wind 2 Connector

Analysis to Support Petition Before the Energy Facilities Siting Board

Docket #EFSB 22-06

Volume II: Attachments

November 1, 2022

Submitted by
Commonwealth Wind, LLC
125 High Street, 6th Floor
Boston, MA 02110

Submitted to
Energy Facilities Siting Board
One South Station
Boston, MA 02114

Prepared by
Epsilon Associates, Inc.
3 Mill & Main Place
Suite 250
Maynard, MA 01754

In Association with
Foley Hoag LLP
Stantec, Inc.
Geo SubSea LLC
Public Archaeology Laboratory

Table of Contents

Volume II – Attachments

Attachment A Detailed Scoring Spreadsheets

Attachment B Preliminary Engineering Plans

Attachment B1: Dowses Beach Landing HDD Landfall Drill Paths

Attachment B2: Onshore 275-Kv Transmission Cable Duct Bank Route

Attachment B3: Onshore 275-Kv Transmission Route 6 Crossing

Attachment B4: 275/345 KV GIS Substation

Attachment C Offshore Export Cable Corridor Map Series

Attachment C1: Benthic Habitat Map Set – Auster

Attachment C2: Benthic Habitat Map Set – Coastal And Marine Ecological Classification Standard (CMECS) System

Attachment D Fisheries Communication Plan (FCP)

Attachment E Sediment Dispersion Modeling

Attachment F RMA Climate Resilience Design Standards Tool Report

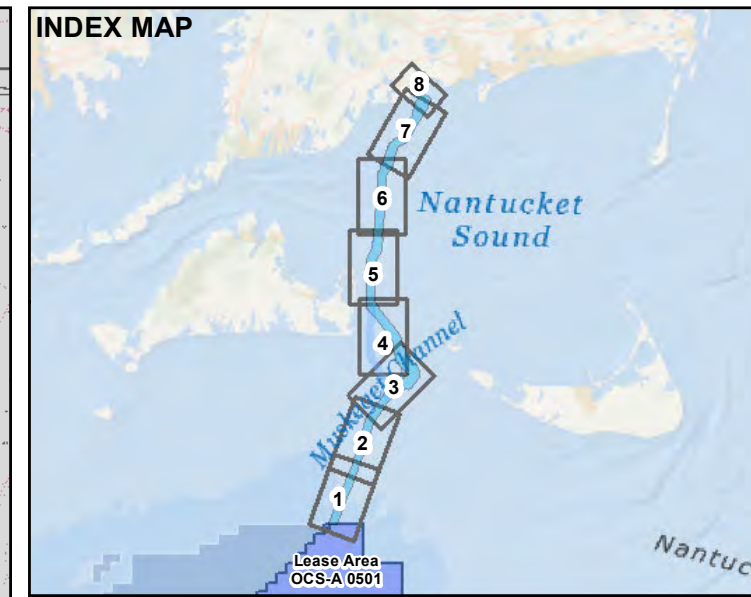
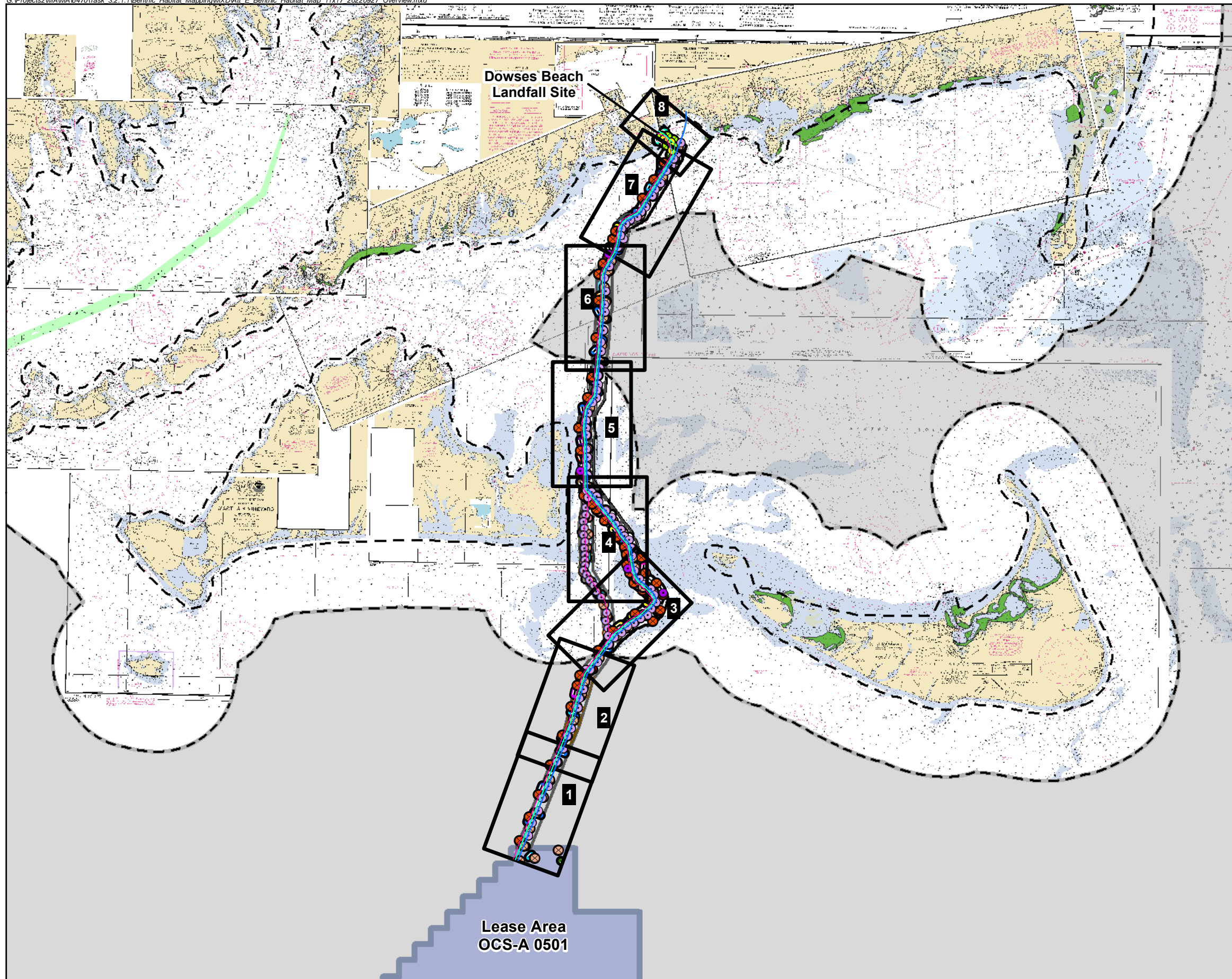
Attachment G Massachusetts Coastal Zone Management Act Consistency Certification

Attachment C

Offshore Export Cable Corridor Map Series

Attachment C1

Benthic Habitat Map Set – Auster Classification System



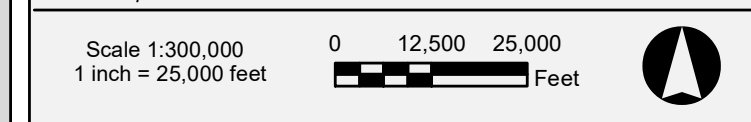
LEGEND

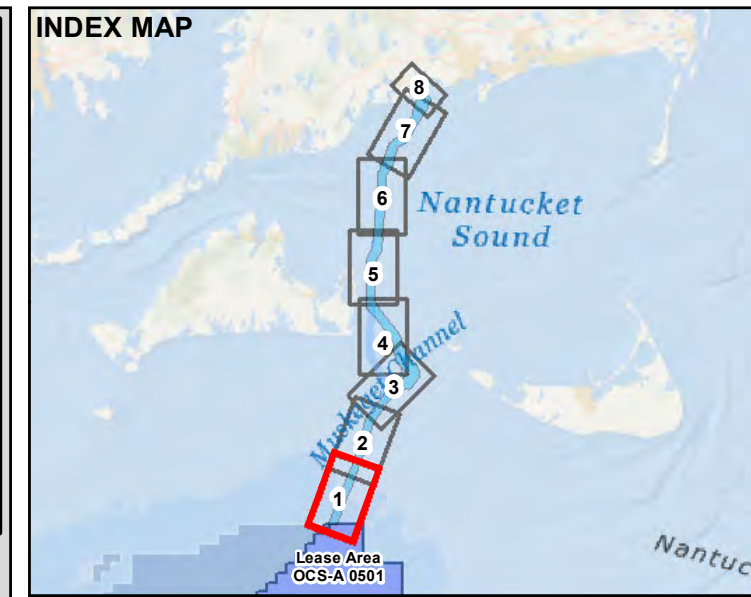
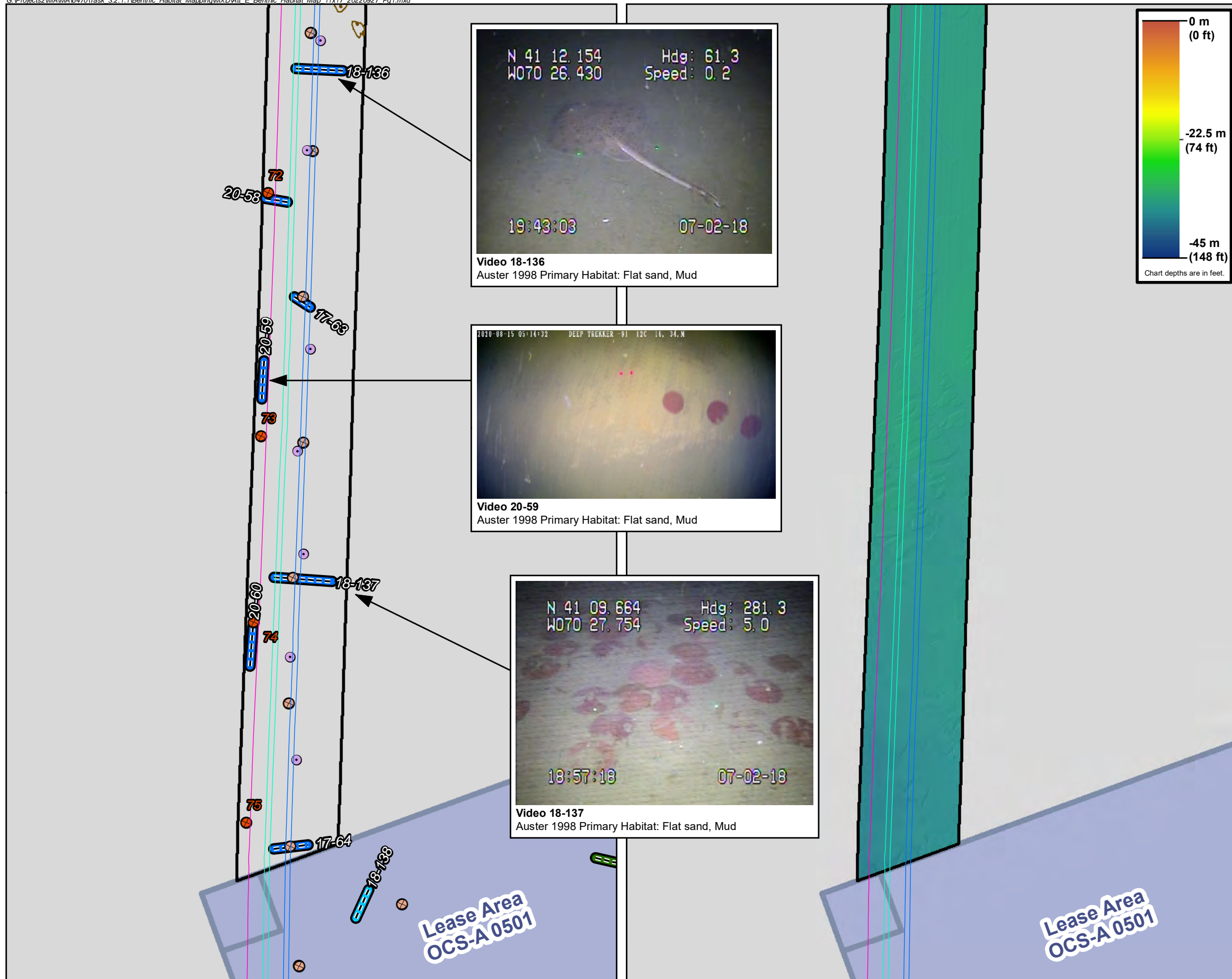
- Vibracores (2022)
- Vibracore (2020)
- Vibracore (2017-2019)
- Grab Samples (2022)
- Benthic Grabs (2020)
- Benthic Grabs (2017-2019)
- Video Transect
- State/Federal Boundary
- Eelgrass - 2015 DEP Survey
- Hard Bottom/Coarse Deposits (2018 Survey)
- Hard Bottom/Coarse Deposits (2020 Survey)
- Biogenic/Surface Organics & Mats (2018 Survey)
- Biogenic/Surface Organics & Mats (2020 Survey)
- Complex Seafloor/Bedforms (2018 Survey)
- Complex Seafloor/Bedforms (2020 Survey)
- Offshore Export Cable Corridor (OECC)
- OECC Western Muskeget Variant
- New England Wind Connector 2/Commonwealth Wind Preliminary Offshore Cables 1 and 2
- New England Wind Connector 2/Commonwealth Wind Preliminary Offshore Cables - Western and Eastern Muskeget Variants
- Park City Wind Preliminary Offshore Cable Alignments
- Lease Area Boundary
- Massachusetts Ocean Management Planning Area Boundary
- Federal Waters

Auster 1998 Primary Habitat: Video Transect Colors Correspond to Habitat Categories

■ Biogenic Structures	■ Pebble cobble/Sand waves
■ Flat sand, Mud	■ Pebble cobble/Flat sand, Mud
■ Flat sand, Mud/biogenic structures	■ Pebble cobble w/ sponge/Flat sand, Mud
■ Flat sand, Mud/Pebble cobble	■ Sand waves
■ Flat sand, Mud/Pebble cobble w/ sponge	■ Sand waves/Pebble cobble
■ Flat sand, Mud/Sand waves	■ Sand waves/Shell aggregates
■ Flat sand, Mud/Shell Aggregates	■ Shell aggregates
■ Pebble cobble	■ Shell aggregate/Pebble cobble
■ Pebble/Cobble with sponge	■ Shell aggregates/Flat sand, Mud

Basemap: Nautical Charts 13229/13233/13237/13238/13241, NOAA
NOTE: Depths shown on nautical charts are in feet.



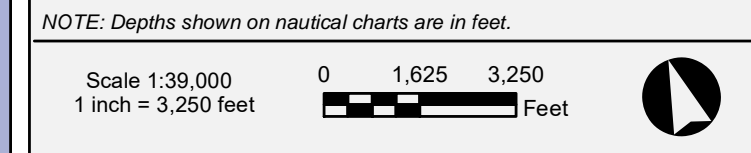


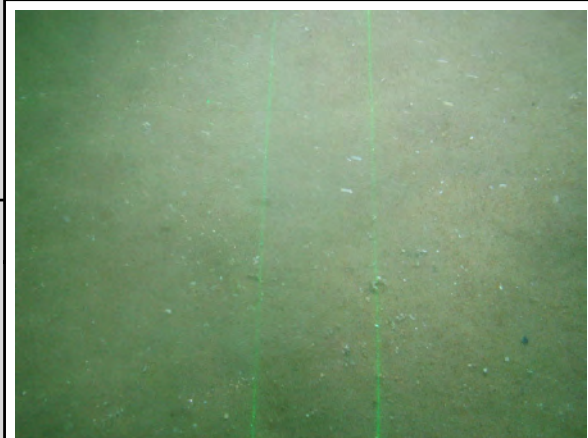
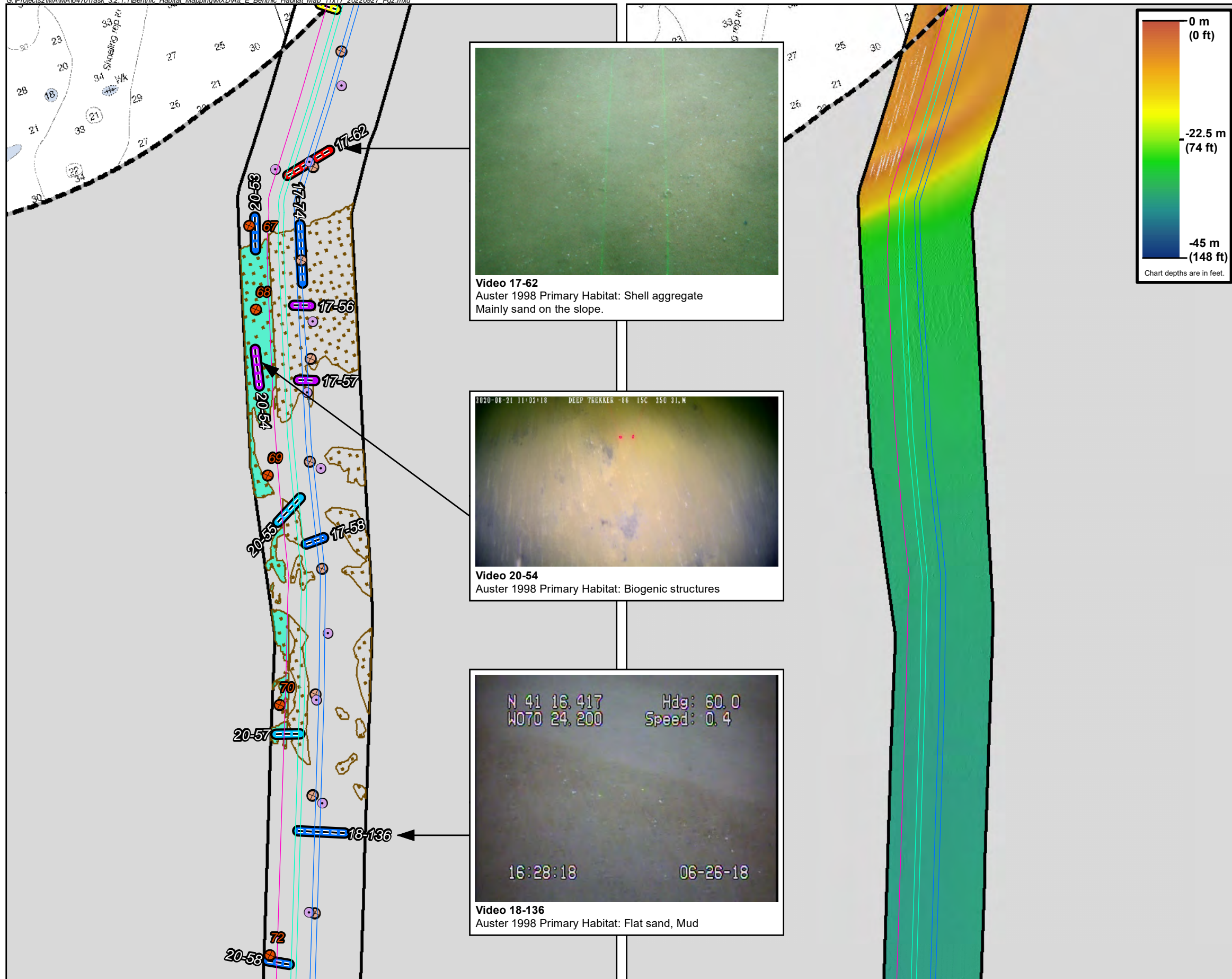
LEGEND

- Vibracores (2022)
- Vibracore (2020)
- Vibracore (2017-2019)
- Grab Samples (2022)
- Benthic Grabs (2020)
- Benthic Grabs (2017-2019)
- Video Transect
- State/Federal Boundary
- Eelgrass - 2015 DEP Survey
- Hard Bottom/Coarse Deposits (2018 Survey)
- Hard Bottom/Coarse Deposits (2020 Survey)
- Biogenic/Surface Organics & Mats (2018 Survey)
- Biogenic/Surface Organics & Mats (2020 Survey)
- Complex Seafloor/Bedforms (2018 Survey)
- Complex Seafloor/Bedforms (2020 Survey)
- Offshore Export Cable Corridor (OECC)
- OECC Western Muskeget Variant
- New England Wind Connector 2/Commonwealth Wind Preliminary Offshore Cables 1 and 2
- New England Wind Connector 2/Commonwealth Wind Preliminary Offshore Cables – Western and Eastern Muskeget Variants
- Park City Wind Preliminary Offshore Cable Alignments
- Lease Area Boundary
- Massachusetts Ocean Management Planning Area Boundary
- Federal Waters

Auster 1998 Primary Habitat: Video Transect Colors Correspond to Habitat Categories

● Biogenic Structures	● Pebble cobble/Sand waves
● Flat sand, Mud	● Pebble cobble/Flat sand, Mud
● Flat sand, Mud/biogenic structures	● Pebble cobble w/ sponge/Flat sand, Mud
● Flat sand, Mud/Pebble cobble	● Sand waves
● Flat sand, Mud/Pebble cobble w/ sponge	● Sand waves/Pebble cobble
● Flat sand, Mud/Sand waves	● Sand waves/Shell aggregates
● Flat sand, Mud/Shell Aggregates	● Shell aggregates
● Pebble cobble	● Shell aggregate/Pebble cobble
● Pebble/Cobble with sponge	● Shell aggregates/Flat sand, Mud





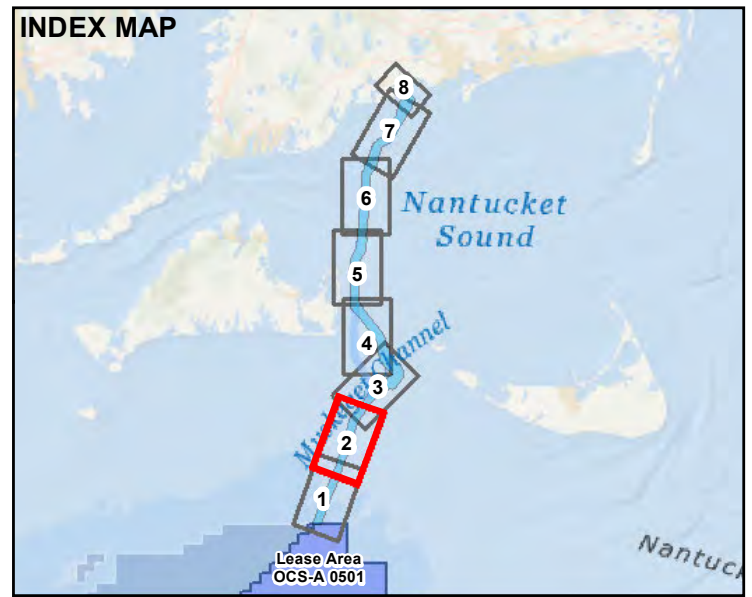
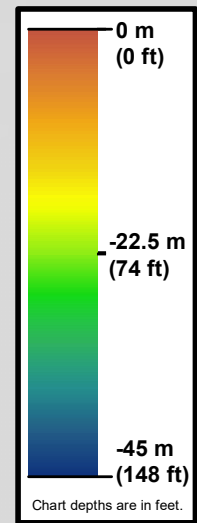
Video 17-62
Auster 1998 Primary Habitat: Shell aggregate
Mainly sand on the slope.



Video 20-54
Auster 1998 Primary Habitat: Biogenic structures



Video 18-136
Auster 1998 Primary Habitat: Flat sand, Mud



LEGEND

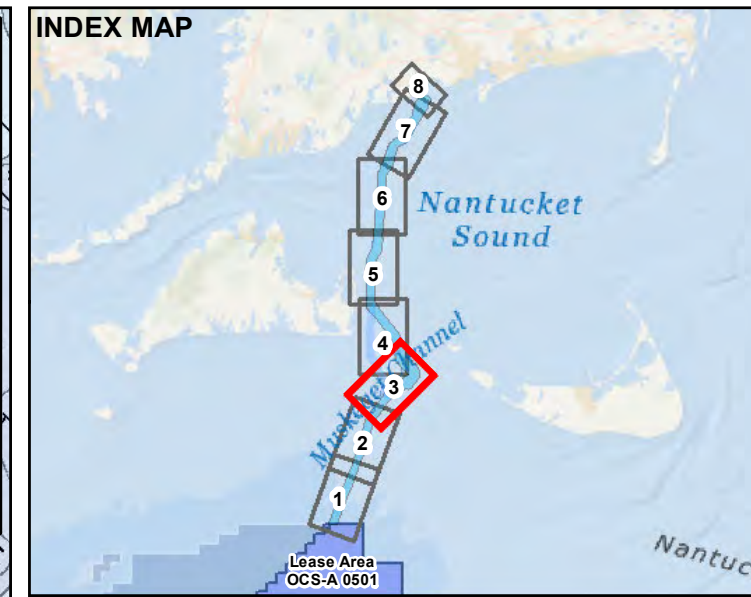
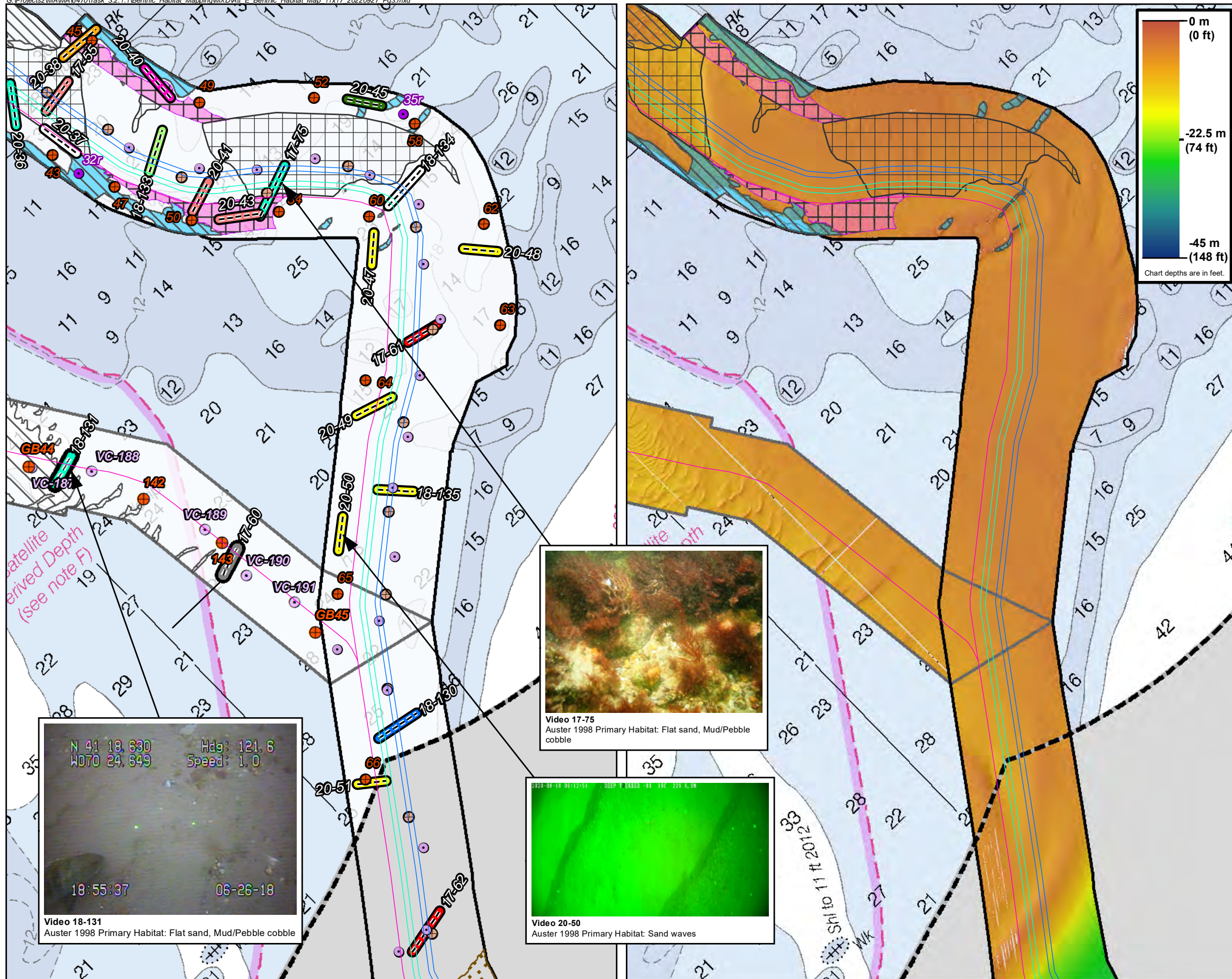
- Vibracores (2022)
- Vibracore (2020)
- Vibracore (2017-2019)
- Grab Samples (2022)
- Benthic Grabs (2020)
- Benthic Grabs (2017-2019)
- Video Transect
- State/Federal Boundary
- Eelgrass - 2015 DEP Survey
- Hard Bottom/Coarse Deposits (2018 Survey)
- Hard Bottom/Coarse Deposits (2020 Survey)
- Biogenic/Surface Organics & Mats (2018 Survey)
- Biogenic/Surface Organics & Mats (2020 Survey)
- Complex Seafloor/Bedforms (2018 Survey)
- Complex Seafloor/Bedforms (2020 Survey)
- Offshore Export Cable Corridor (OECC)
- OECC Western Muskeget Variant
- New England Wind Connector 2/Commonwealth Wind Preliminary Offshore Cables 1 and 2
- New England Wind Connector 2/Commonwealth Wind Preliminary Offshore Cables - Western and Eastern Muskeget Variants
- Park City Wind Preliminary Offshore Cable Alignments
- Lease Area Boundary
- Massachusetts Ocean Management Planning Area Boundary
- Federal Waters

Auster 1998 Primary Habitat: Video Transect Colors Correspond to Habitat Categories

Biogenic Structures	Pebble cobble/Sand waves
Flat sand, Mud	Pebble cobble/Flat sand, Mud
Flat sand, Mud/biogenic structures	Pebble cobble w/ sponge/Flat sand, Mud
Flat sand, Mud/Pebble cobble	Sand waves
Flat sand, Mud/Pebble cobble w/ sponge	Sand waves/Pebble cobble
Flat sand, Mud/Sand waves	Sand waves/Shell aggregates
Flat sand, Mud/Shell Aggregates	Shell aggregates
Pebble cobble	Shell aggregate/Pebble cobble
Pebble/Cobble with sponge	Shell aggregates/Flat sand, Mud

Basemap: Nautical Chart 13233, NOAA
NOTE: Depths shown on nautical charts are in feet.





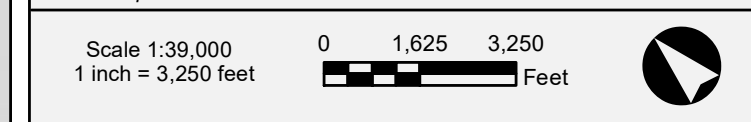
LEGEND

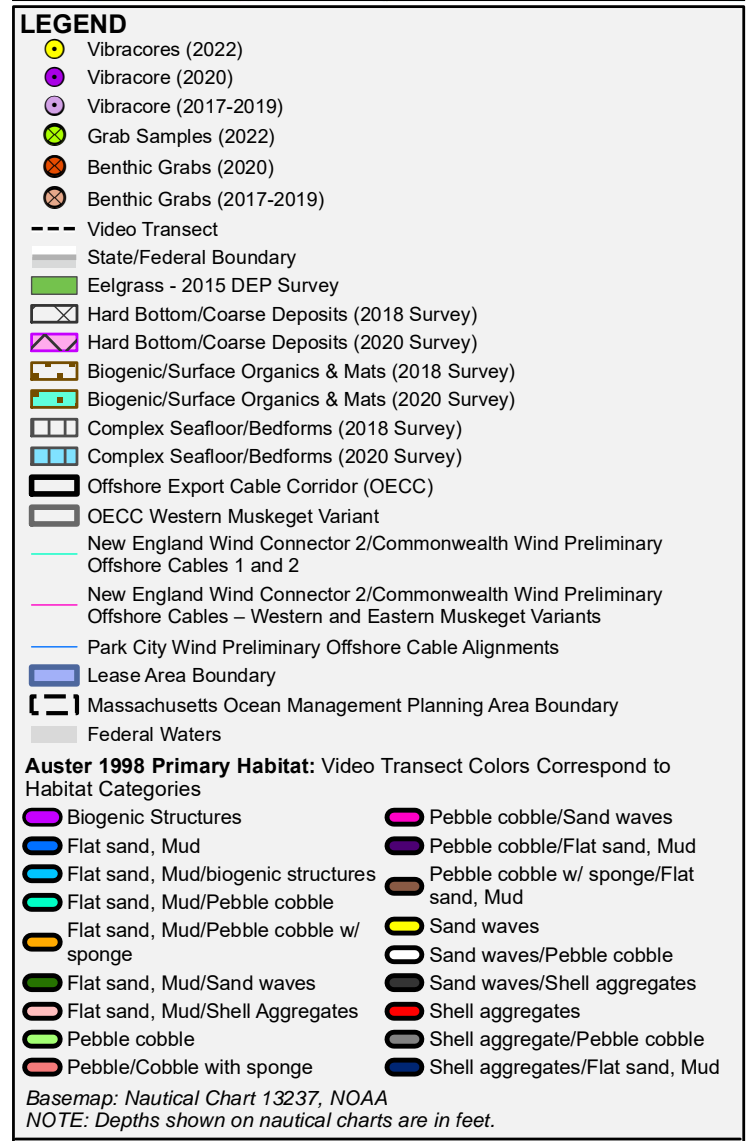
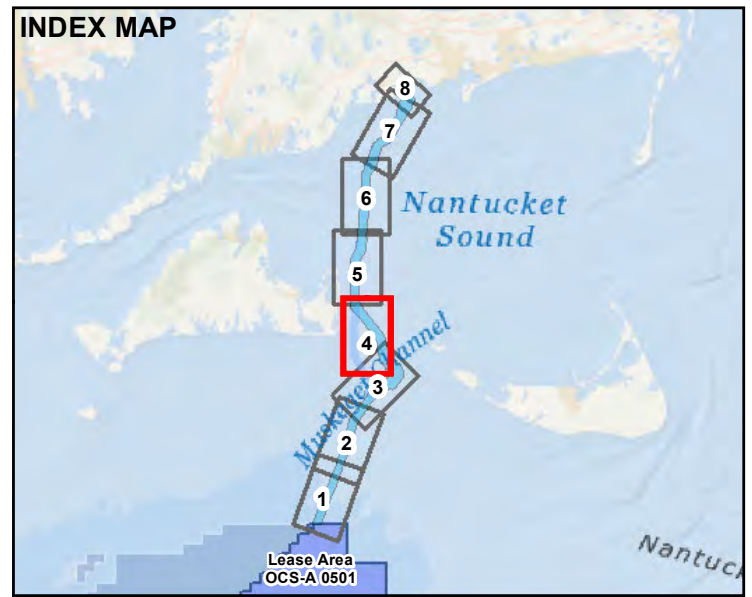
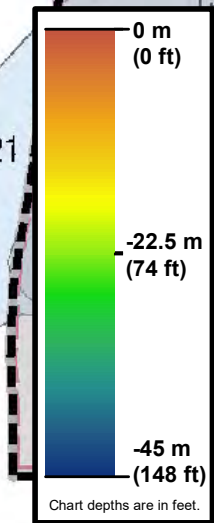
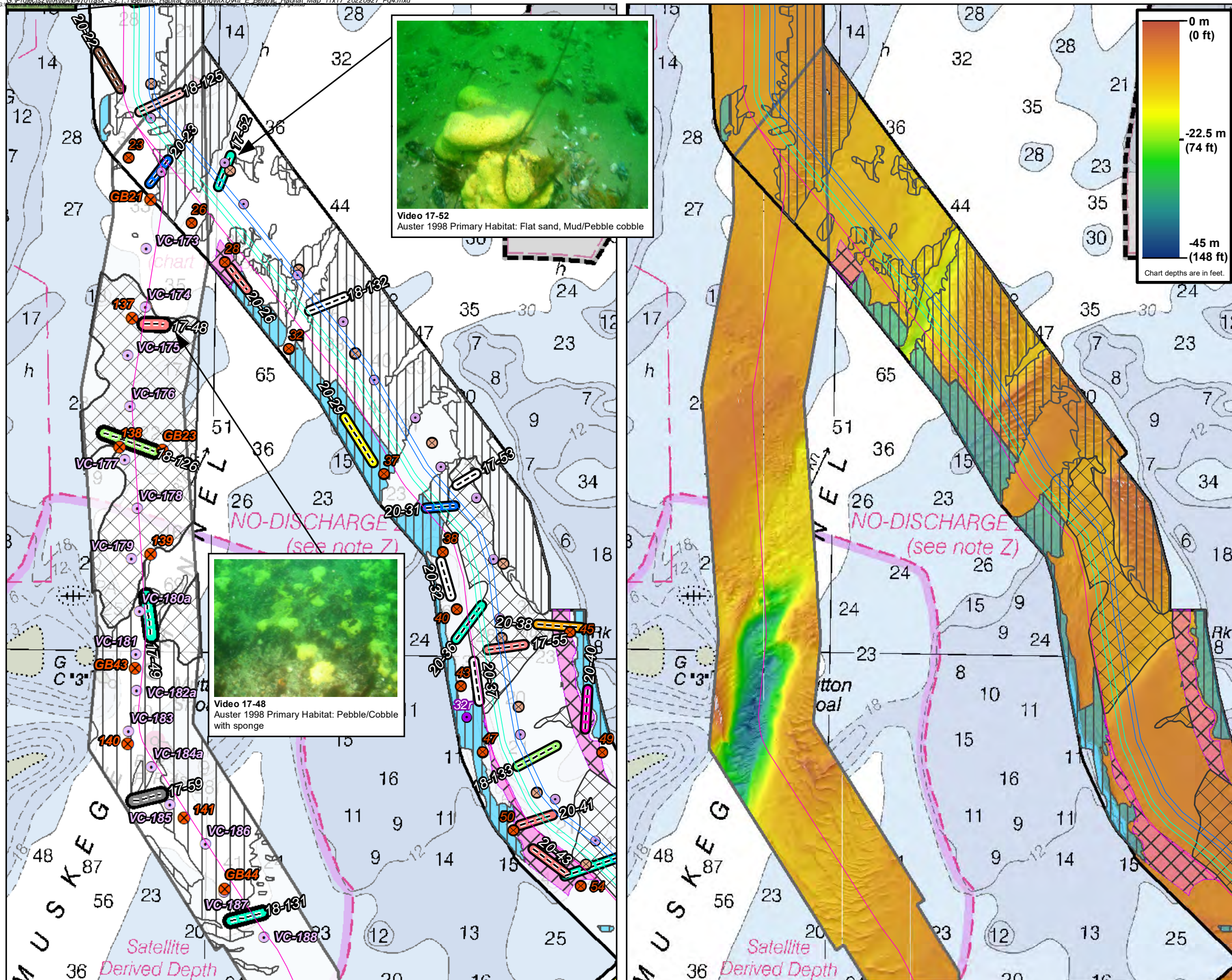
- Vibracores (2022)
- Vibracore (2020)
- Vibracore (2017-2019)
- Grab Samples (2022)
- Benthic Grabs (2020)
- Benthic Grabs (2017-2019)
- Video Transect
- State/Federal Boundary
- Eelgrass - 2015 DEP Survey
- Hard Bottom/Coarse Deposits (2018 Survey)
- Hard Bottom/Coarse Deposits (2020 Survey)
- Biogenic/Surface Organics & Mats (2018 Survey)
- Biogenic/Surface Organics & Mats (2020 Survey)
- Complex Seafloor/Bedforms (2018 Survey)
- Complex Seafloor/Bedforms (2020 Survey)
- Offshore Export Cable Corridor (OECC)
- OECC Western Muskeget Variant
- New England Wind Connector 2/Commonwealth Wind Preliminary Offshore Cables 1 and 2
- New England Wind Connector 2/Commonwealth Wind Preliminary Offshore Cables - Western and Eastern Muskeget Variants
- Park City Wind Preliminary Offshore Cable Alignments
- Lease Area Boundary
- Massachusetts Ocean Management Planning Area Boundary
- Federal Waters

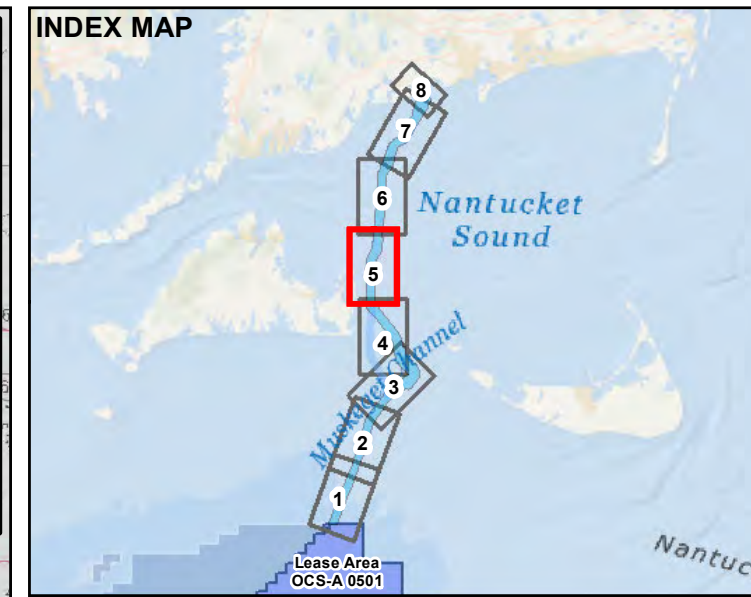
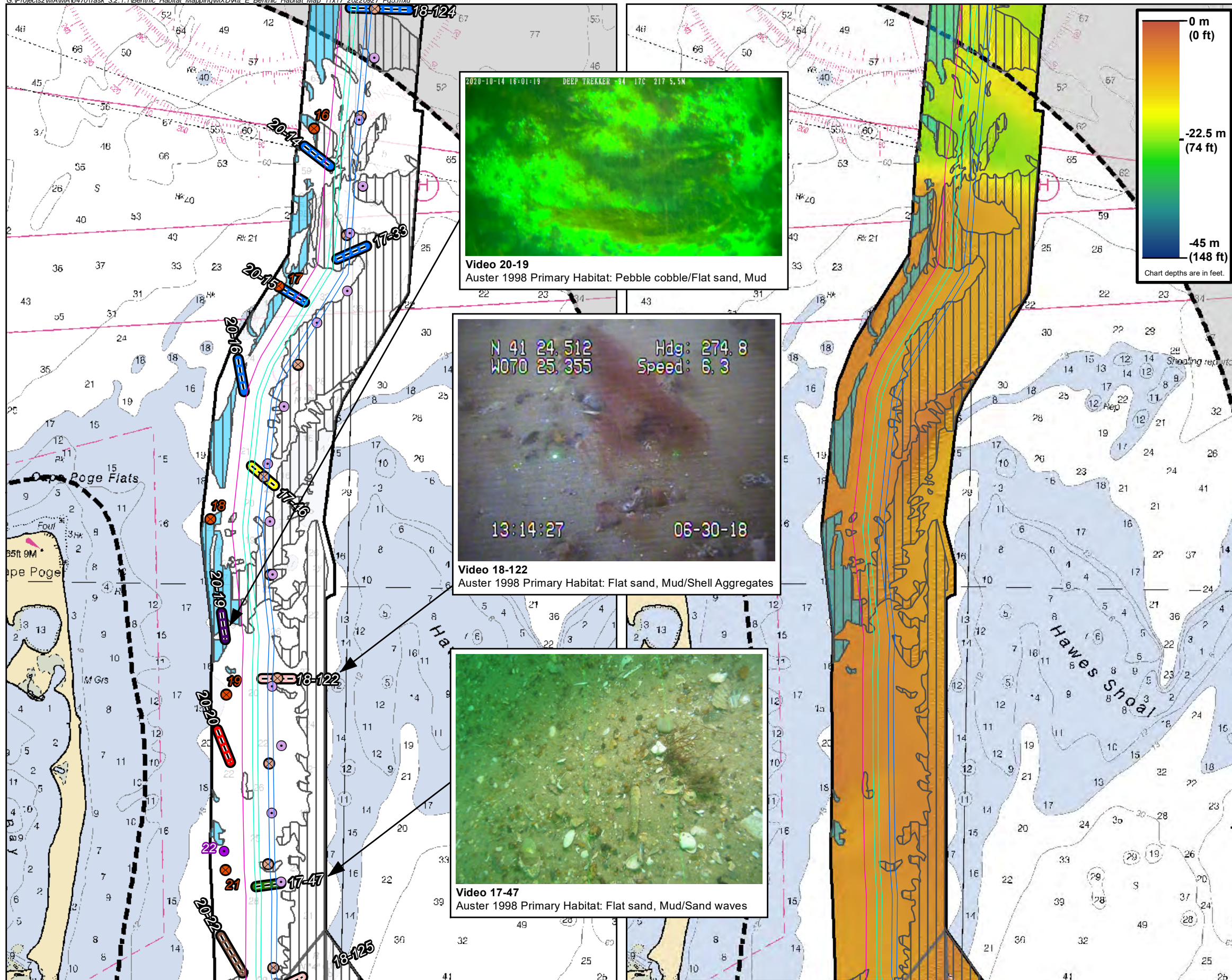
Auster 1998 Primary Habitat: Video Transect Colors Correspond to Habitat Categories

● Biogenic Structures	● Pebble cobble/Sand waves
● Flat sand, Mud	● Pebble cobble/Flat sand, Mud
● Flat sand, Mud/biogenic structures	● Pebble cobble w/ sponge/Flat sand, Mud
● Flat sand, Mud/Pebble cobble	● Sand waves
● Flat sand, Mud/Pebble cobble w/ sponge	● Sand waves/Pebble cobble
● Flat sand, Mud/Sand waves	● Sand waves/Shell aggregates
● Flat sand, Mud/Shell Aggregates	● Shell aggregates
● Pebble cobble	● Shell aggregate/Pebble cobble
● Pebble/Cobble with sponge	● Shell aggregates/Flat sand, Mud

Basemap: Nautical Chart 13237, NOAA
NOTE: Depths shown on nautical charts are in feet.







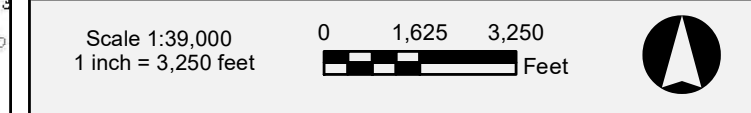
LEGEND

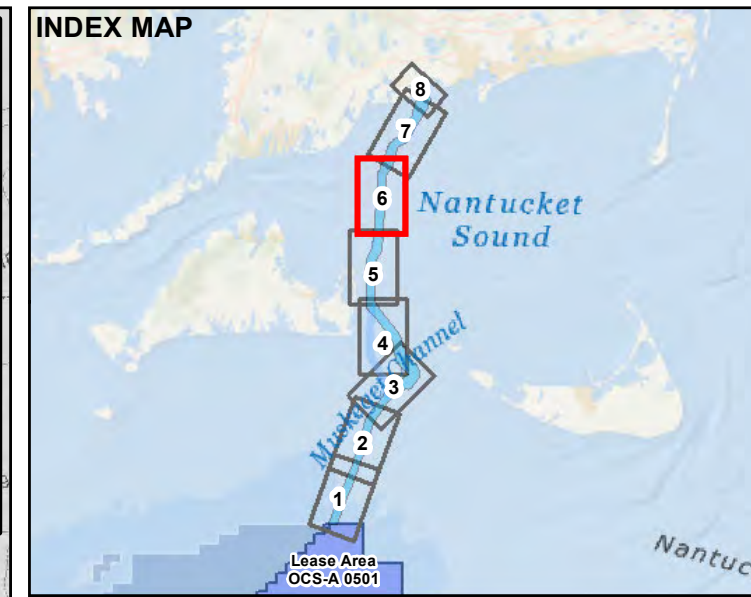
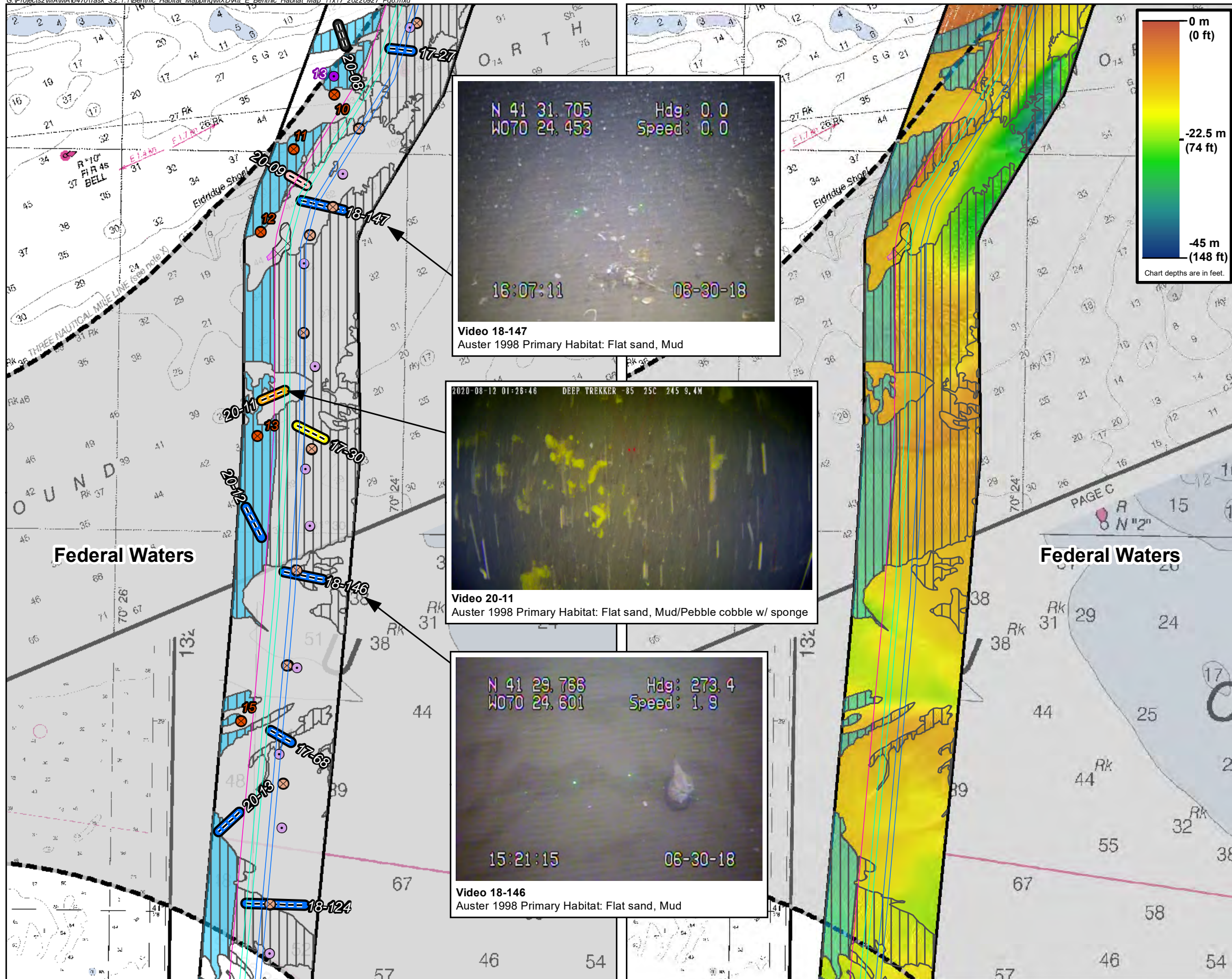
- Vibracores (2022)
- Vibracore (2020)
- Vibracore (2017-2019)
- Grab Samples (2022)
- Benthic Grabs (2020)
- Benthic Grabs (2017-2019)
- Video Transect
- State/Federal Boundary
- Eelgrass - 2015 DEP Survey
- Hard Bottom/Coarse Deposits (2018 Survey)
- Hard Bottom/Coarse Deposits (2020 Survey)
- Biogenic/Surface Organics & Mats (2018 Survey)
- Biogenic/Surface Organics & Mats (2020 Survey)
- Complex Seafloor/Bedforms (2018 Survey)
- Complex Seafloor/Bedforms (2020 Survey)
- Offshore Export Cable Corridor (OECC)
- OECC Western Muskeget Variant
- New England Wind Connector 2/Commonwealth Wind Preliminary Offshore Cables 1 and 2
- New England Wind Connector 2/Commonwealth Wind Preliminary Offshore Cables - Western and Eastern Muskeget Variants
- Park City Wind Preliminary Offshore Cable Alignments
- Lease Area Boundary
- Massachusetts Ocean Management Planning Area Boundary
- Federal Waters

Auster 1998 Primary Habitat: Video Transect Colors Correspond to Habitat Categories

● Biogenic Structures	● Pebble cobble/Sand waves
● Flat sand, Mud	● Pebble cobble/Flat sand, Mud
● Flat sand, Mud/biogenic structures	● Pebble cobble w/ sponge/Flat sand, Mud
● Flat sand, Mud/Pebble cobble	● Sand waves
● Flat sand, Mud/Pebble cobble w/ sponge	● Sand waves/Pebble cobble
● Flat sand, Mud/Sand waves	● Sand waves/Shell aggregates
● Flat sand, Mud/Shell Aggregates	● Shell aggregates
● Pebble cobble	● Shell aggregate/Pebble cobble
● Pebble/Cobble with sponge	● Shell aggregates/Flat sand, Mud

Basemap: Nautical Chart 13233, NOAA
NOTE: Depths shown on nautical charts are in feet.





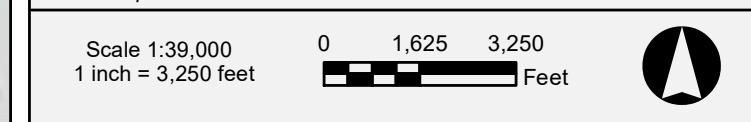
LEGEND

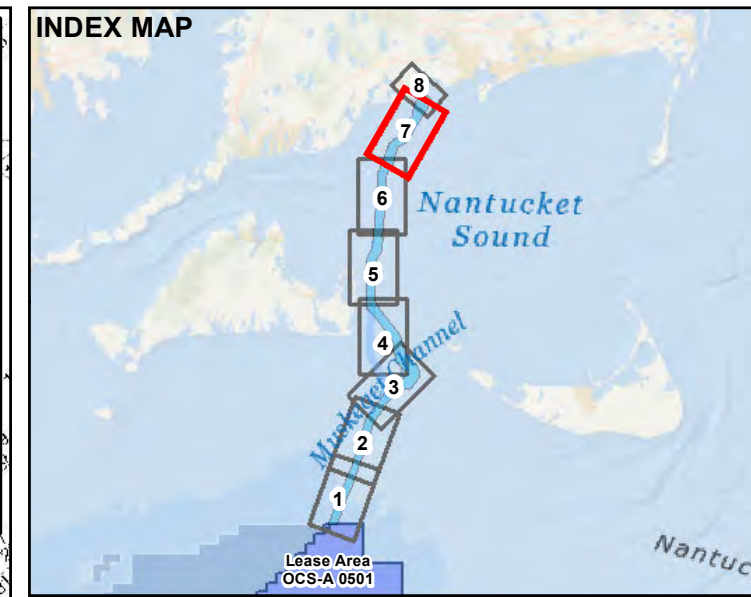
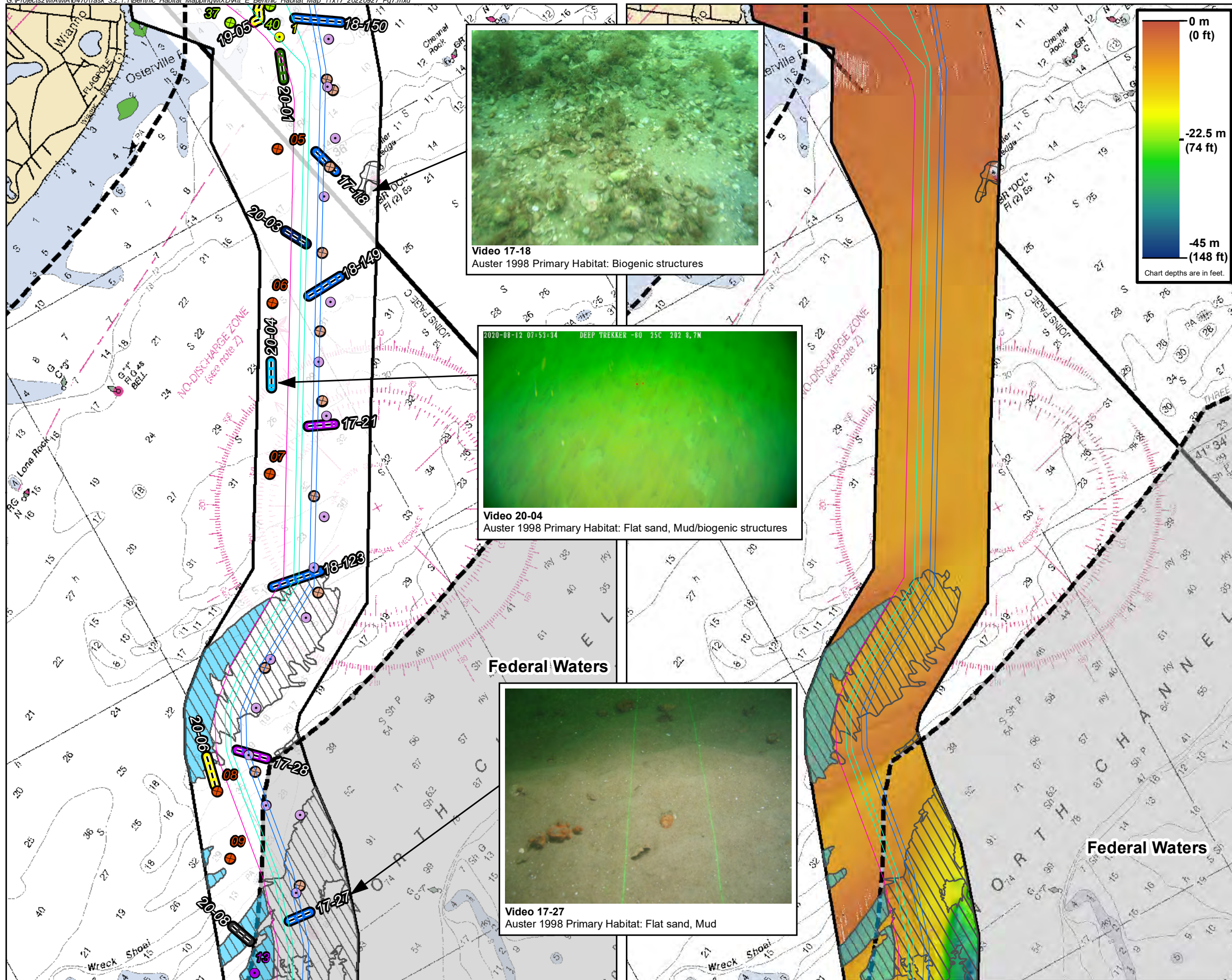
- Vibracores (2022)
- Vibracore (2020)
- Vibracore (2017-2019)
- Grab Samples (2022)
- Benthic Grabs (2020)
- Benthic Grabs (2017-2019)
- Video Transect
- State/Federal Boundary
- Eelgrass - 2015 DEP Survey
- Hard Bottom/Coarse Deposits (2018 Survey)
- Hard Bottom/Coarse Deposits (2020 Survey)
- Biogenic/Surface Organics & Mats (2018 Survey)
- Biogenic/Surface Organics & Mats (2020 Survey)
- Complex Seafloor/Bedforms (2018 Survey)
- Complex Seafloor/Bedforms (2020 Survey)
- Offshore Export Cable Corridor (OECC)
- OECC Western Muskeget Variant
- New England Wind Connector 2/Commonwealth Wind Preliminary Offshore Cables 1 and 2
- New England Wind Connector 2/Commonwealth Wind Preliminary Offshore Cables - Western and Eastern Muskeget Variants
- Park City Wind Preliminary Offshore Cable Alignments
- Lease Area Boundary
- Massachusetts Ocean Management Planning Area Boundary
- Federal Waters

Auster 1998 Primary Habitat: Video Transect Colors Correspond to Habitat Categories

Biogenic Structures	Pebble cobble/Sand waves
Flat sand, Mud	Pebble cobble/Flat sand, Mud
Flat sand, Mud/biogenic structures	Pebble cobble w/ sponge/Flat sand, Mud
Flat sand, Mud/Pebble cobble	Sand waves
Flat sand, Mud/Pebble cobble w/ sponge	Sand waves/Pebble cobble
Flat sand, Mud/Sand waves	Sand waves/Shell aggregates
Flat sand, Mud/Shell Aggregates	Shell aggregates
Pebble cobble	Shell aggregate/Pebble cobble
Pebble/Cobble with sponge	Shell aggregates/Flat sand, Mud

Basemap: Nautical Chart 13229/13237/13238, NOAA
NOTE: Depths shown on nautical charts are in feet.





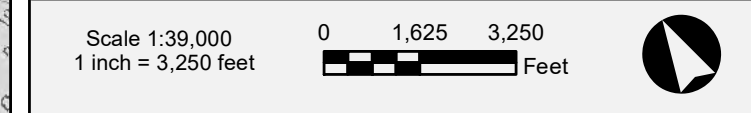
LEGEND

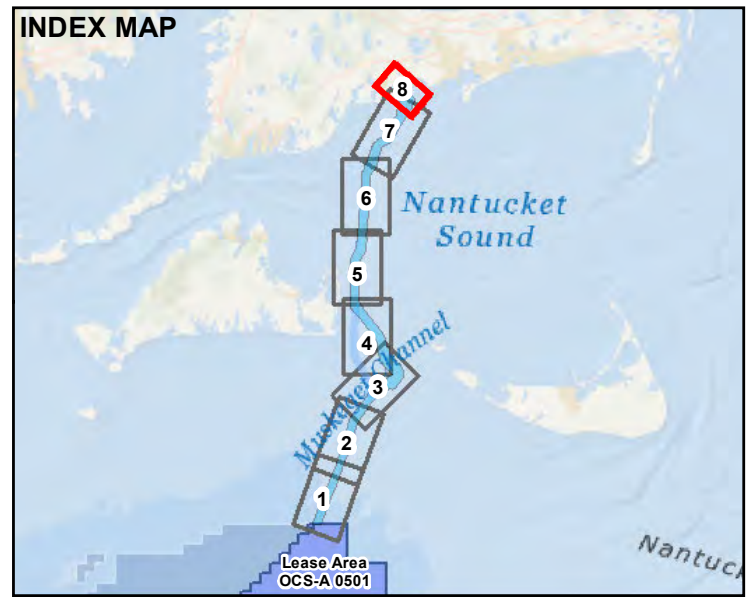
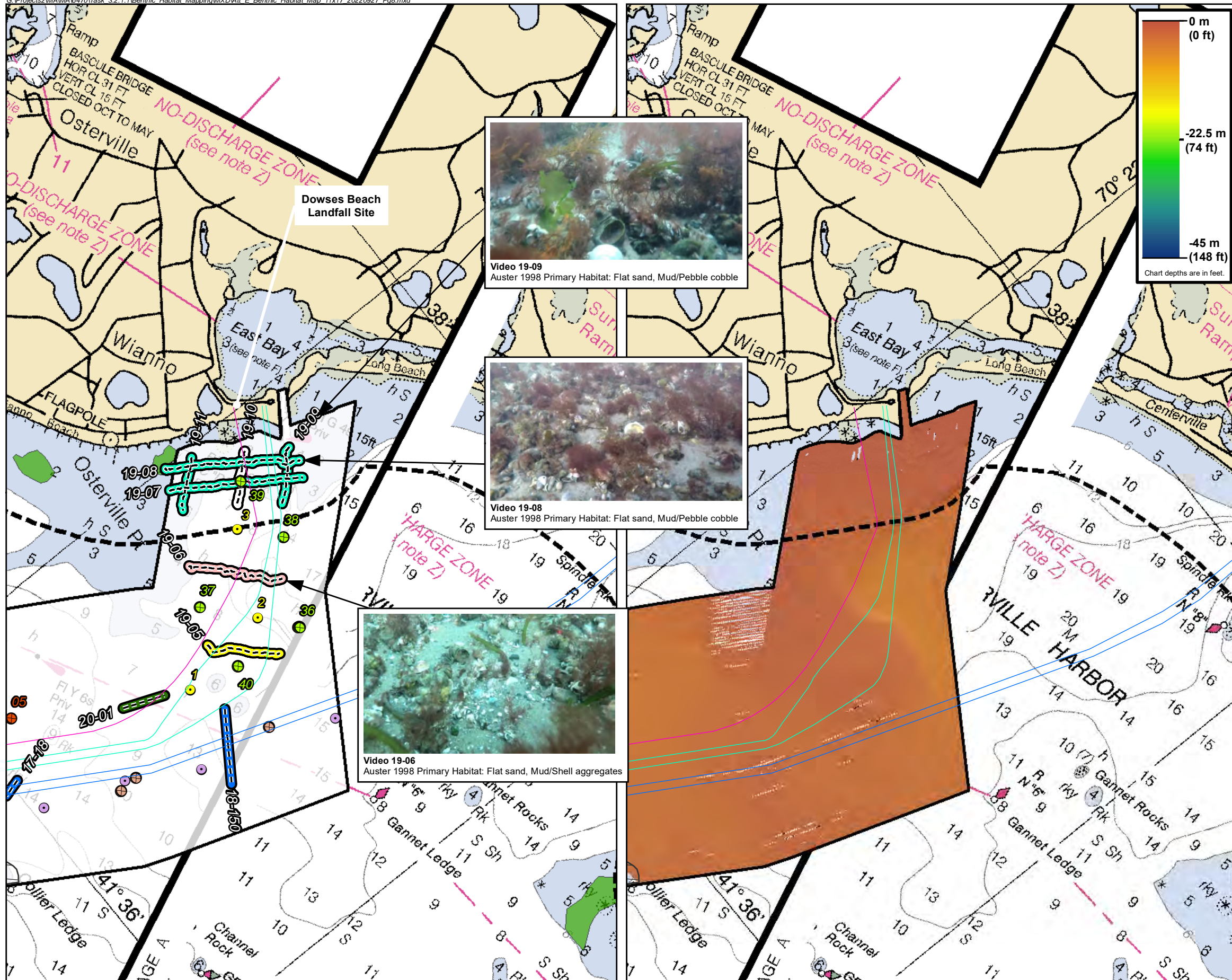
- Vibracores (2022)
- Vibracore (2020)
- Vibracore (2017-2019)
- Grab Samples (2022)
- Benthic Grabs (2020)
- Benthic Grabs (2017-2019)
- - - Video Transect
- - - State/Federal Boundary
- Eelgrass - 2015 DEP Survey
- Hard Bottom/Coarse Deposits (2018 Survey)
- Hard Bottom/Coarse Deposits (2020 Survey)
- Biogenic/Surface Organics & Mats (2018 Survey)
- Biogenic/Surface Organics & Mats (2020 Survey)
- Complex Seafloor/Bedforms (2018 Survey)
- Complex Seafloor/Bedforms (2020 Survey)
- Offshore Export Cable Corridor (OECC)
- OECC Western Muskeget Variant
- New England Wind Connector 2/Commonwealth Wind Preliminary Offshore Cables 1 and 2
- New England Wind Connector 2/Commonwealth Wind Preliminary Offshore Cables - Western and Eastern Muskeget Variants
- Park City Wind Preliminary Offshore Cable Alignments
- Lease Area Boundary
- Massachusetts Ocean Management Planning Area Boundary
- Federal Waters

Auster 1998 Primary Habitat: Video Transect Colors Correspond to Habitat Categories

■ Biogenic Structures	■ Pebble cobble/Sand waves
■ Flat sand, Mud	■ Pebble cobble/Flat sand, Mud
■ Flat sand, Mud/biogenic structures	■ Pebble cobble w/ sponge/Flat sand, Mud
■ Flat sand, Mud/Pebble cobble	■ Sand waves
■ Flat sand, Mud/Pebble cobble w/ sponge	■ Sand waves/Pebble cobble
■ Flat sand, Mud/Sand waves	■ Sand waves/Shell aggregates
■ Flat sand, Mud/Shell Aggregates	■ Shell aggregates
■ Pebble cobble	■ Shell aggregate/Pebble cobble
■ Pebble/Cobble with sponge	■ Shell aggregates/Flat sand, Mud

Basemap: Nautical Chart 13229, NOAA
NOTE: Depths shown on nautical charts are in feet.





LEGEND

- Vibracores (2022)
- Vibracore (2020)
- Vibracore (2017-2019)
- Grab Samples (2022)
- Benthic Grabs (2020)
- Benthic Grabs (2017-2019)
- Video Transect
- State/Federal Boundary
- Eelgrass - 2015 DEP Survey
- Hard Bottom/Coarse Deposits (2018 Survey)
- Hard Bottom/Coarse Deposits (2020 Survey)
- Biogenic/Surface Organics & Mats (2018 Survey)
- Biogenic/Surface Organics & Mats (2020 Survey)
- Complex Seafloor/Bedforms (2018 Survey)
- Complex Seafloor/Bedforms (2020 Survey)
- Offshore Export Cable Corridor (OECC)
- OECC Western Muskeget Variant
- New England Wind Connector 2/Commonwealth Wind Preliminary Offshore Cables 1 and 2
- New England Wind Connector 2/Commonwealth Wind Preliminary Offshore Cables - Western and Eastern Muskeget Variants
- Park City Wind Preliminary Offshore Cable Alignments
- Lease Area Boundary
- Massachusetts Ocean Management Planning Area Boundary
- Federal Waters

Auster 1998 Primary Habitat: Video Transect Colors Correspond to Habitat Categories

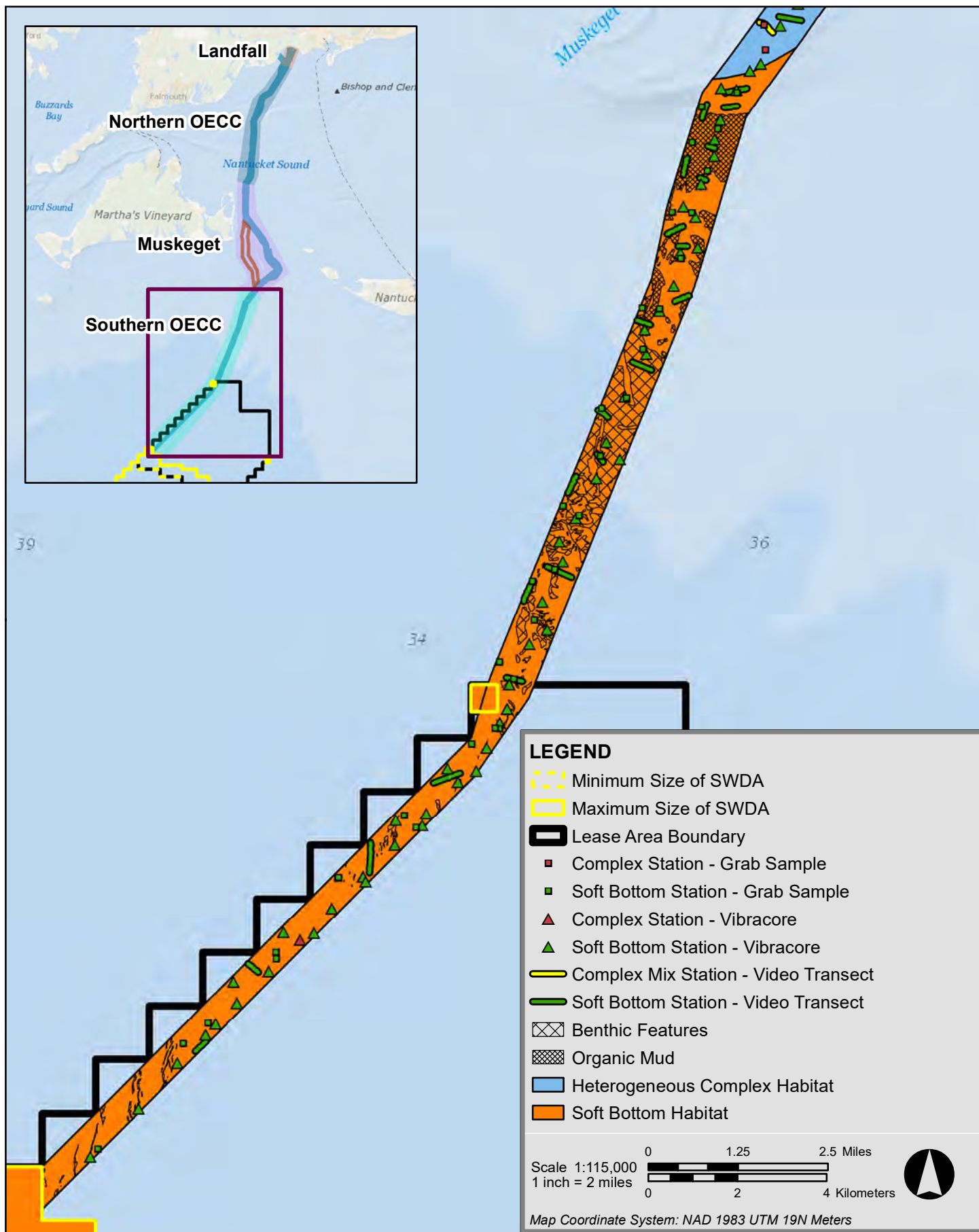
● Biogenic Structures	● Pebble cobble/Sand waves
● Flat sand, Mud	● Pebble cobble/Flat sand, Mud
● Flat sand, Mud/biogenic structures	● Pebble cobble w/ sponge/Flat sand, Mud
● Flat sand, Mud/Pebble cobble	● Sand waves
● Flat sand, Mud/Pebble cobble w/ sponge	● Sand waves/Pebble cobble
● Flat sand, Mud/Sand waves	● Sand waves/Shell aggregates
● Flat sand, Mud/Shell Aggregates	● Shell aggregates
● Pebble cobble	● Shell aggregate/Pebble cobble
● Pebble/Cobble with sponge	● Shell aggregates/Flat sand, Mud

Basemap: Nautical Chart 13229, NOAA
NOTE: Depths shown on nautical charts are in feet.



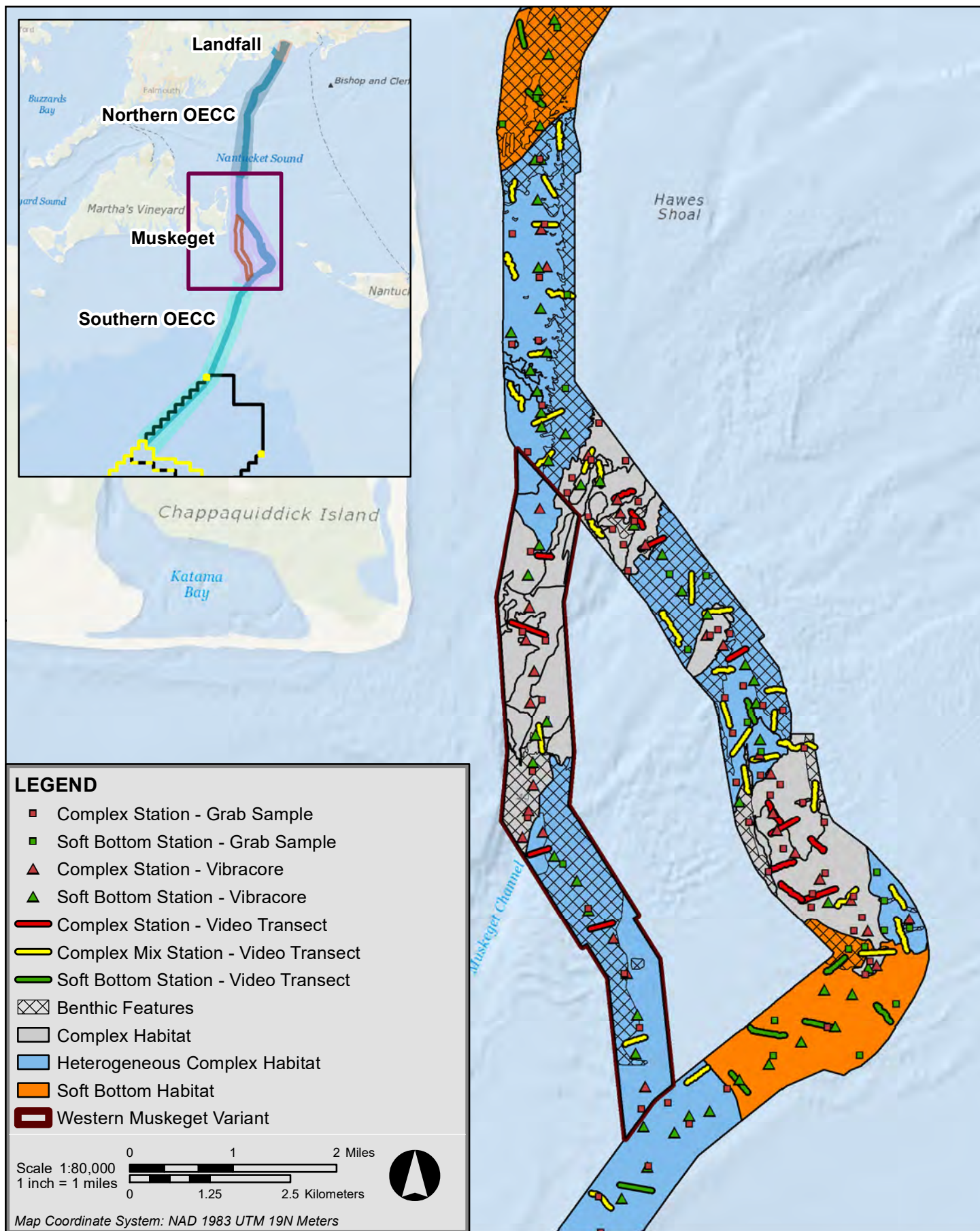
Attachment C2

Benthic Habitat Map Set – Coastal and Marine Ecological Classification Standard
(CMECS) System



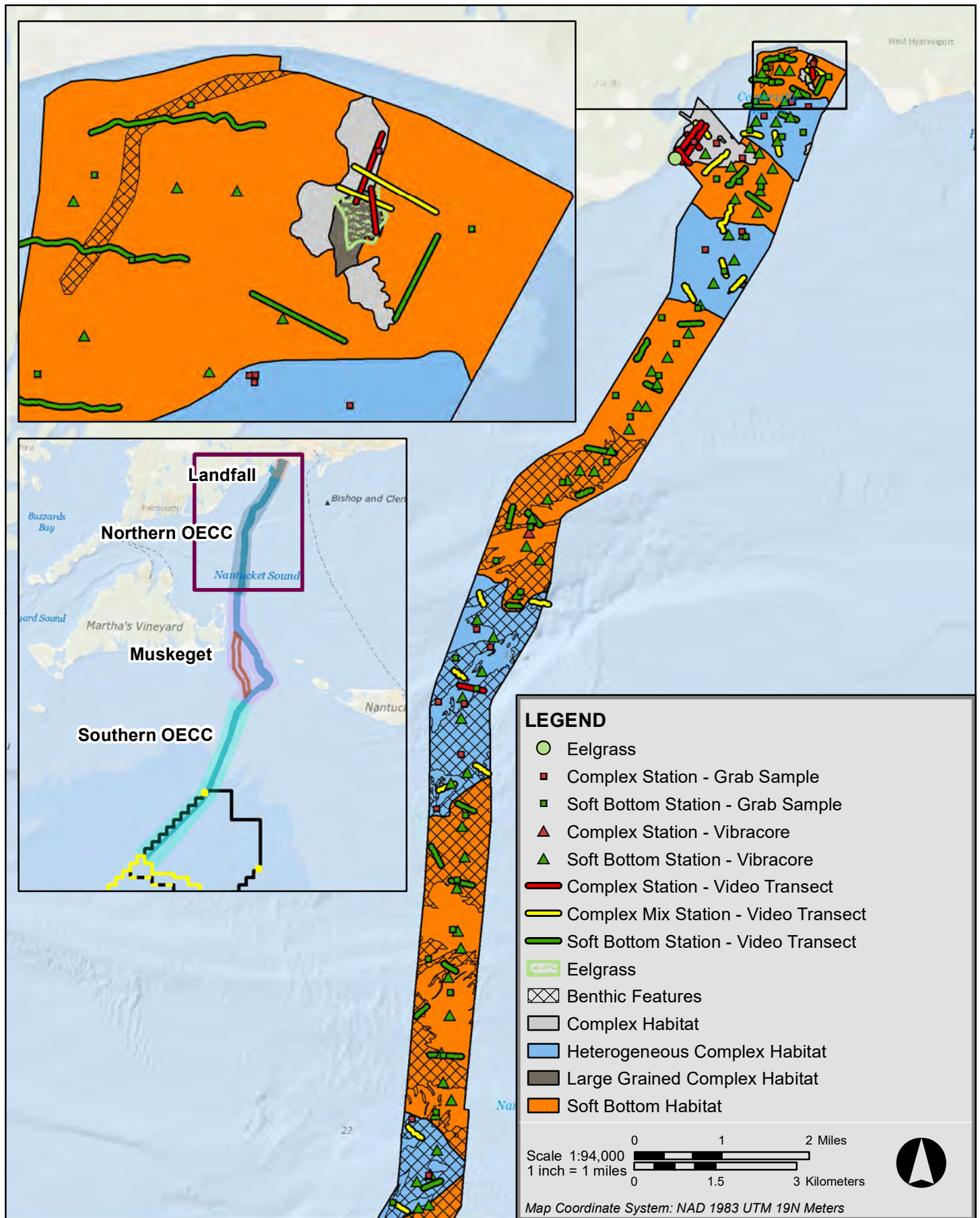
Service Layer Credits: Sources: Esri, GEBCO, NOAA, National Geographic, Garmin, HERE, Geonames.org, and other contributors

Source: New England Wind, Essential Fish Habitat Assessment, June 2022. Submitted to BOEM as Appendix III-F to the June 2022 COP for Lease Area OCS-A 0534.



Service Layer Credits: Sources: Esri, GEBCO, NOAA, National Geographic, Garmin, HERE, Geonames.org, and other contributors

Source: New England Wind, Essential Fish Habitat Assessment, June 2022. Submitted to BOEM as Appendix III-F to the June 2022 COP for Lease Area OCS-A 0534.



Service Layer Credits: Sources: Esri, GEBCO, NOAA, National Geographic, Garmin, HERE, Geonames.org, and other contributors

Source: New England Wind, Essential Fish Habitat Assessment, June 2022. Submitted to BOEM as Appendix III-F to the June 2022 COP for Lease Area OCS-A 0534.