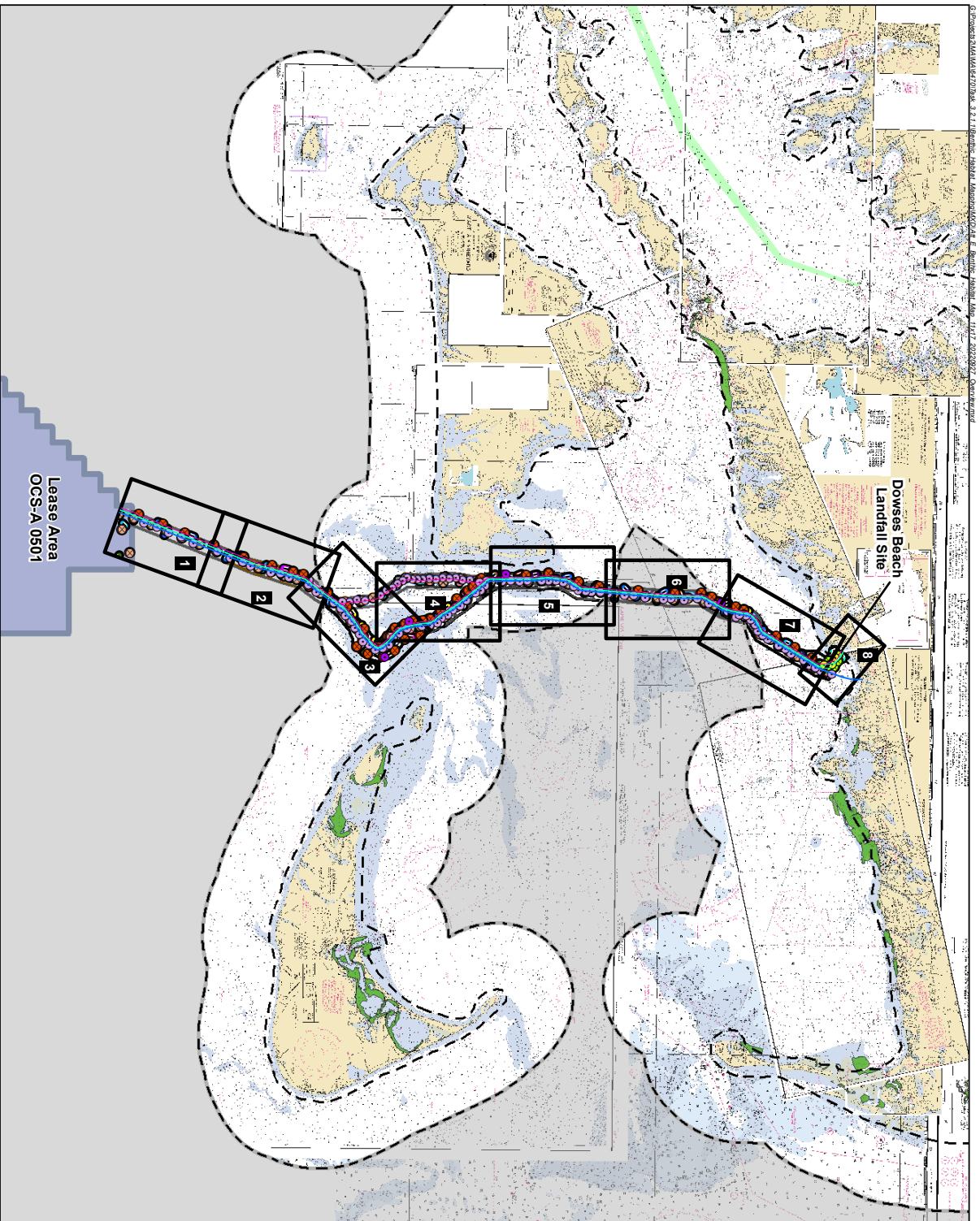


Attachment E

Offshore Export Cable Corridor Map Series

Attachment E1

Benthic Habitat Map Set – Auster Classification System



LEGEND

- Viracores (2022)
- Viracore (2020)
- Viracore (2017-2019)
- Grab Samples (2022)
- Benthic Grabs (2020)
- Benthic Grabs (2017-2019)
- Video Transect
- State/Federal Boundary
- Edgartown - 2015 DEP Survey
- Hard Bottom/Coarse Deposits (2018 Survey)
- Bigenetic/Surface Organisms & Mats (2018 Survey)
- Bigenetic/Surface Organisms & Mats (2020 Survey)
- Complex Seafloor/Bedforms (2018 Survey)
- Complex Seafloor/Bedforms (2020 Survey)
- Offshore Export Cable Corridor (OECC)
- OECC Western Muskeget Variant
- New England Wind Connector 2/Commonwealth Wind Preliminary Offshore Cables 1 and 2
- New England Wind Connector 2/Commonwealth Wind Preliminary Offshore Cables - Western and Eastern Muskeget Variants
- Park City Wind Preliminary Offshore Cable Alignments
- Lease Area Boundary
- Massachusetts Ocean Management Planning Area Boundary
- Federal Waters

Auster 1998 Primary Habitat Video Transect Colors Correspond to Habitat Categories

- Biogenic Structures
- Flat sand, Mud
- Flat sand, Mudd/Biogenic structures
- Flat sand, Mudd/Pebble cobble
- Flat sand, Mudd/Pebble cobble w/ sponge
- Flat sand, Mudd/Pebble cobble w/ sponge
- Flat sand, Mudd/Sand waves
- Flat sand, Mudd/Steel Aggregates
- Pebble/Cobble with sponge
- Basemap, Nautical Charts 13229/13233/13237/13238/13241, NOAA

Habitat Categories

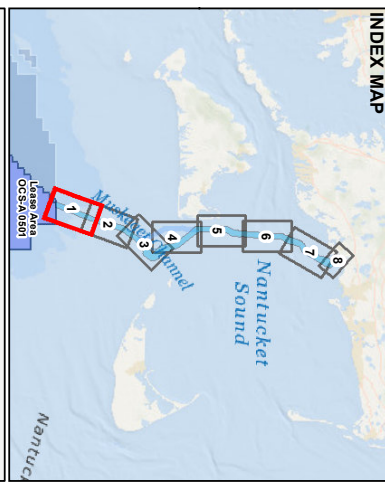
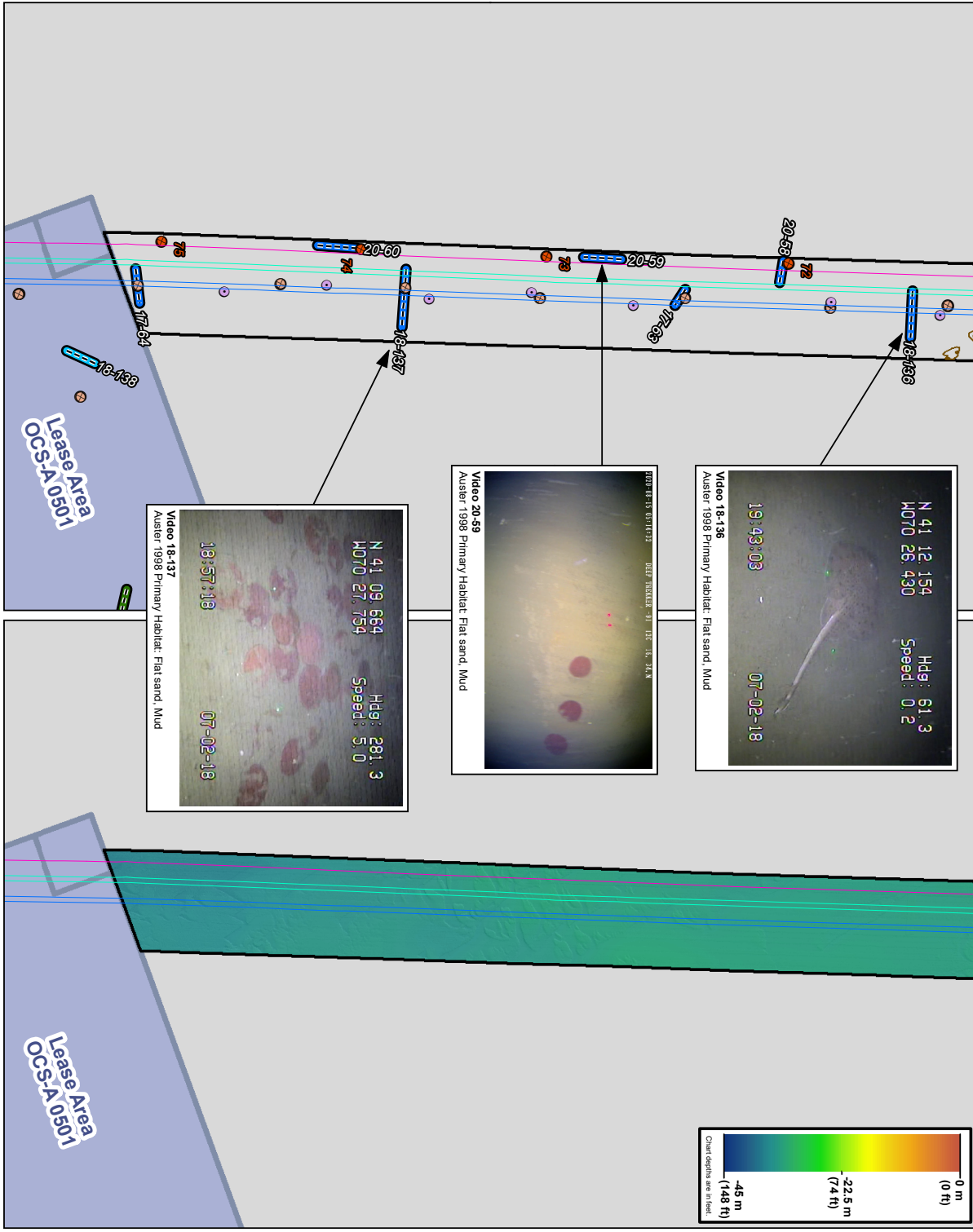
- Pebble cobble/Sand waves
- Pebble cobble/Fat sand, Mud
- Pebble cobble w/ sponge/Fat sand, Mud
- Sand waves
- Sand waves/Pebble cobble
- Sand waves/Shell aggregates
- Shell aggregates
- Shell aggregates/Pebble cobble
- Shell aggregates/Fat sand, Mud

NOTE: Depths shown on nautical charts are in feet.

Scale 1:300,000
1 inch = 25,000 feet

0 12,500 25,000 Feet

SEPTEMBER 29, 2022



LEGEND

- Vibracores (2022)
- Vibracore (2020)
- Vibracore (2017-2019)
- Grab Samples (2022)
- Benthic Grabs (2020)
- Benthic Grabs (2017-2019)
- Video Transect
- State/Federal Boundary
- Elriggs - 2015 DEP Survey
- Hard Bottom/Coarse Deposits (2018 Survey)
- Biogenic/Surface Deposits (2020 Survey)
- Biogenic/Surface Organics & Mats (2018 Survey)
- Biogenic/Surface Organics & Mats (2020 Survey)
- Complex Seafloor/Bedforms (2018 Survey)
- Complex Seafloor/Bedforms (2020 Survey)
- Offshore Export Cable Corridor (OECC)
- OECC Western Muskogee Variant
- New England Wind Connector/2/Commonwealth Wind Preliminary Offshore Cables 1 and 2
- New England Wind Connector/2/Commonwealth Wind Preliminary Offshore Cables - Western and Eastern Muskogee Variants
- Park City Wind Preliminary Offshore Cable Alignments
- Lease Area Boundary
- Massachusetts Ocean Management Planning Area Boundary
- Federal Waters

Auster 1998 Primary Habitat: Video Transect Colors Correspond to Habitat Categories

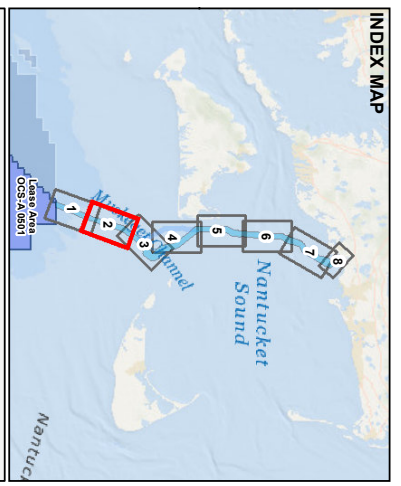
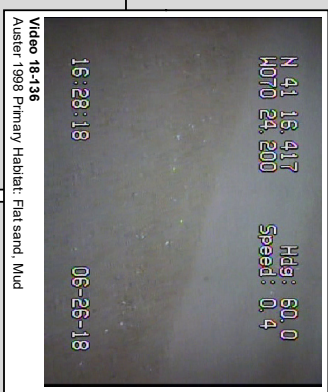
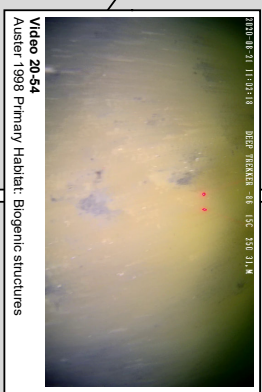
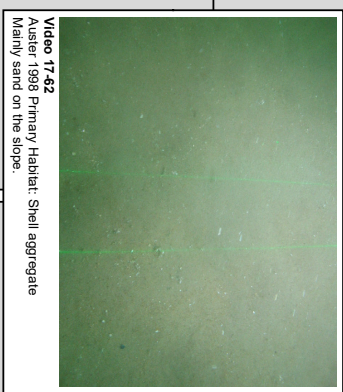
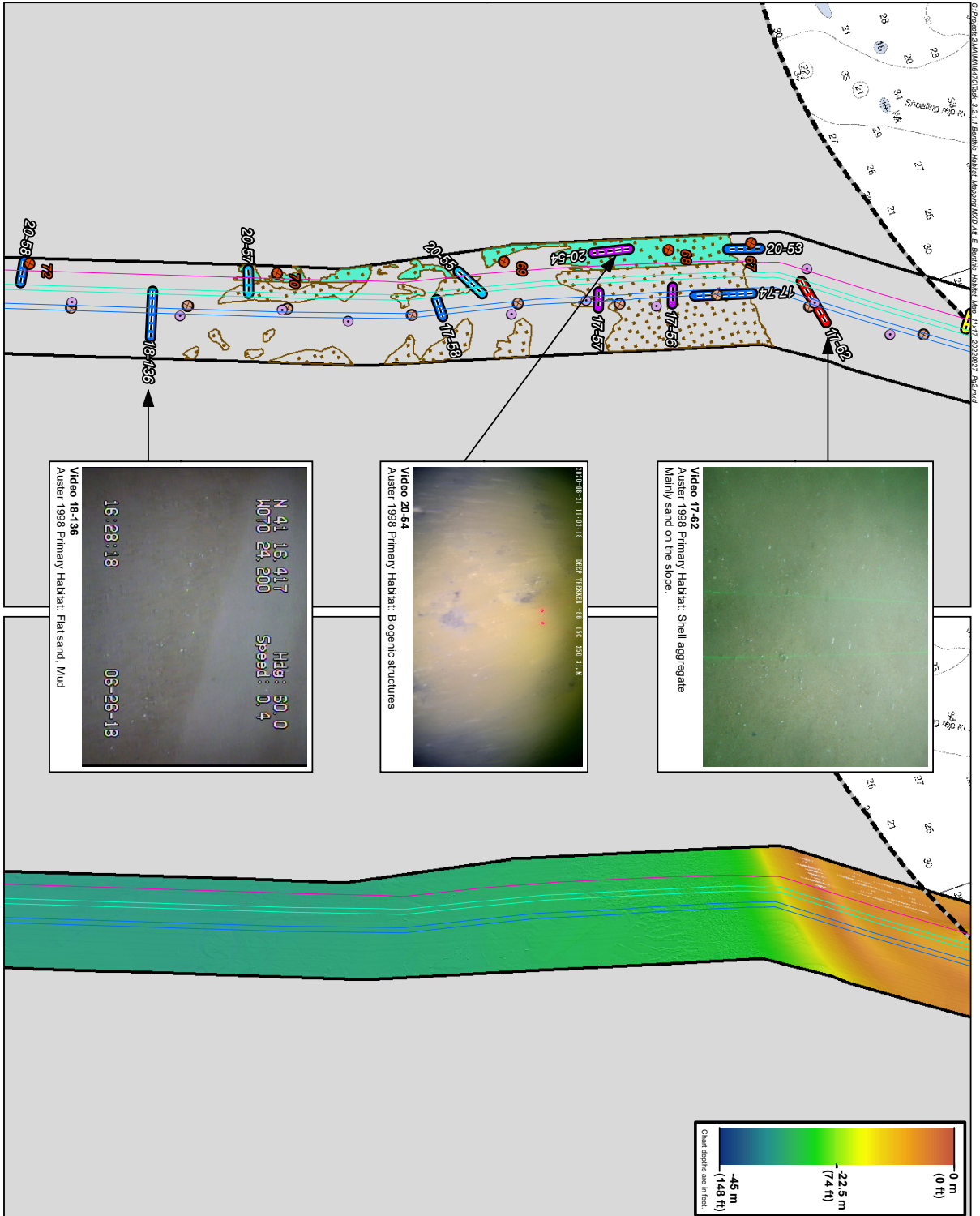
- Biogenic Structures
- Flat sand, Mud
- Flat sand, Mudd/Biogenic structures
- Flat sand, Mudd/Pebble cobble
- Flat sand, Mudd/Pebble cobble w/ sponge
- Flat sand, Mudd/Pebble cobble w/ sponge
- Flat sand, Mudd/Sand waves
- Flat sand, Mudd/Shell Aggregates
- Pebble cobble
- Pebble cobble with sponge
- Pebble cobble with sponge
- Pebble cobble/Sand waves
- Pebble cobble/Sand waves/Shell aggregates
- Shell aggregates
- Shell aggregates/Pebble cobble
- Shell aggregates/Flat sand, Mud

NOTE: Depths shown on nautical charts are in feet.

Scale: 1:39,000
1 inch = 3,250 feet

0 1,625 3,250 Feet

SEPTMBER 29, 2022



LEGEND

- Vibracores (2022)
- Vibracore (2020)
- Vibracore (2017-2019)
- Grab Samples (2022)
- Benthic Grabs (2020)
- Benthic Grabs (2017-2019)
- Video Transect
- State/Federal Boundary
- Elriggs - 2015 DEP Survey
- Hard Bottom/Coarse Deposits (2018 Survey)
- Biogenic/Surface Organics & Mats (2018 Survey)
- Biogenic/Surface Organics & Mats (2020 Survey)
- Complex Seafloor/Bedforms (2018 Survey)
- Complex Seafloor/Bedforms (2020 Survey)
- Offshore Export Cable Corridor (OECC)
- OECC Western Muskogee Variant
- New England Wind Connector 2/Commonwealth Wind Preliminary Offshore Cables 1 and 2
- New England Wind Connector 2/Commonwealth Wind Preliminary Offshore Cables - Western and Eastern Muskogee Variants
- Park City Wind Preliminary Offshore Cable Alignments
- Lease Area Boundary
- Massachusetts Ocean Management Planning Area Boundary
- Federal Waters

Auster 1988 Primary Habitat: Video Transect Colors Correspond to Habitat Categories

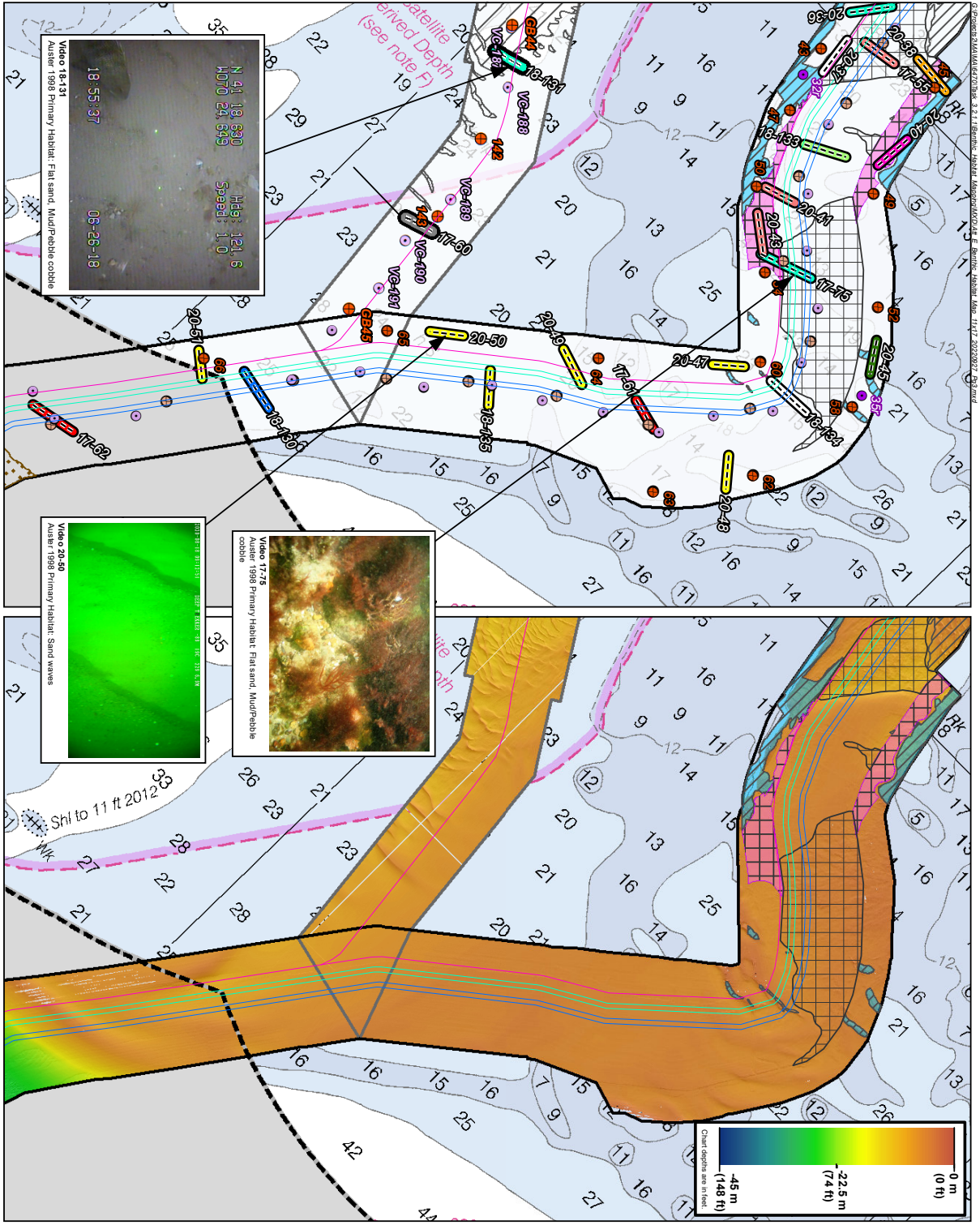
- Biogenic Structures
- Flat sand, Mud
- Flat sand, Mud/biogenic structures
- Flat sand, Mud/Pebble cobble
- Flat sand, Mud/Pebble cobble w/ sponge
- Flat sand, Mud/Pebble cobble w/ sponge
- Flat sand, Mud/Sand waves
- Flat sand, Mud/Shell Aggregates
- Pebble cobble
- Pebble cobble with sponge
- Pebble cobble with shell aggregate/Pebble cobble
- Shell aggregate/Flat sand, Mud
- Pebble cobble/Sand waves
- Pebble cobble/Sand waves/Shell aggregates
- Shell aggregate
- Shell aggregate/Pebble cobble
- Shell aggregate/Flat sand, Mud

NOTE: Depths shown on nautical charts are in feet.

Scale 1:39,000
1 inch = 3,250 feet

0 1,625 3,250 Feet

SEPTEMBER 29, 2022



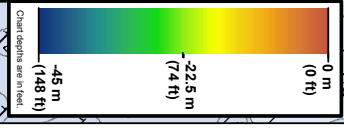
Video 18-131
Auster 1998 Primary Habitat: Flat sand, Mud/Pebble cobble

18:55:37 08-28-18

N 41 18 830 Hdg: 121.6
M010 24 519 Speed: 1.0

Video 17-26
Auster 1998 Primary Habitat: Flat sand, Mud/Pebble cobble

Video 20-50
Auster 1998 Primary Habitat: Sand waves



LEGEND

- Vibracores (2022)
- Vibracore (2020)
- Vibracore (2017-2019)
- Grab Samples (2022)
- Benthic Grabs (2020)
- Benthic Grabs (2017-2019)
- Video Transect
- State/Federal Boundary
- Eligars - 2015 DEP Survey
- Hard Bottom/Coarse Deposits (2018 Survey)
- Bigenetic/Surface Organics & Mats (2018 Survey)
- Bigenetic/Surface Organics & Mats (2020 Survey)
- Complex Seafloor/Bedforms (2018 Survey)
- Complex Seafloor/Bedforms (2020 Survey)
- Offshore Export Cable Corridor (OECC)
- OECC Western Muskogean Variant
- New England Wind Connector/2/Commonwealth Wind Preliminary Offshore Cables 1 and 2
- New England Wind Connector/2/Commonwealth Wind Preliminary Offshore Cables - Western and Eastern Muskogean Variants
- Park City Wind Preliminary Offshore Cable Alignments
- Lease Area Boundary
- Massachusetts Ocean Management Planning Area Boundary
- Federal Waters

Auster 1998 Primary Habitat: Video Transect Colors Correspond to Habitat Categories

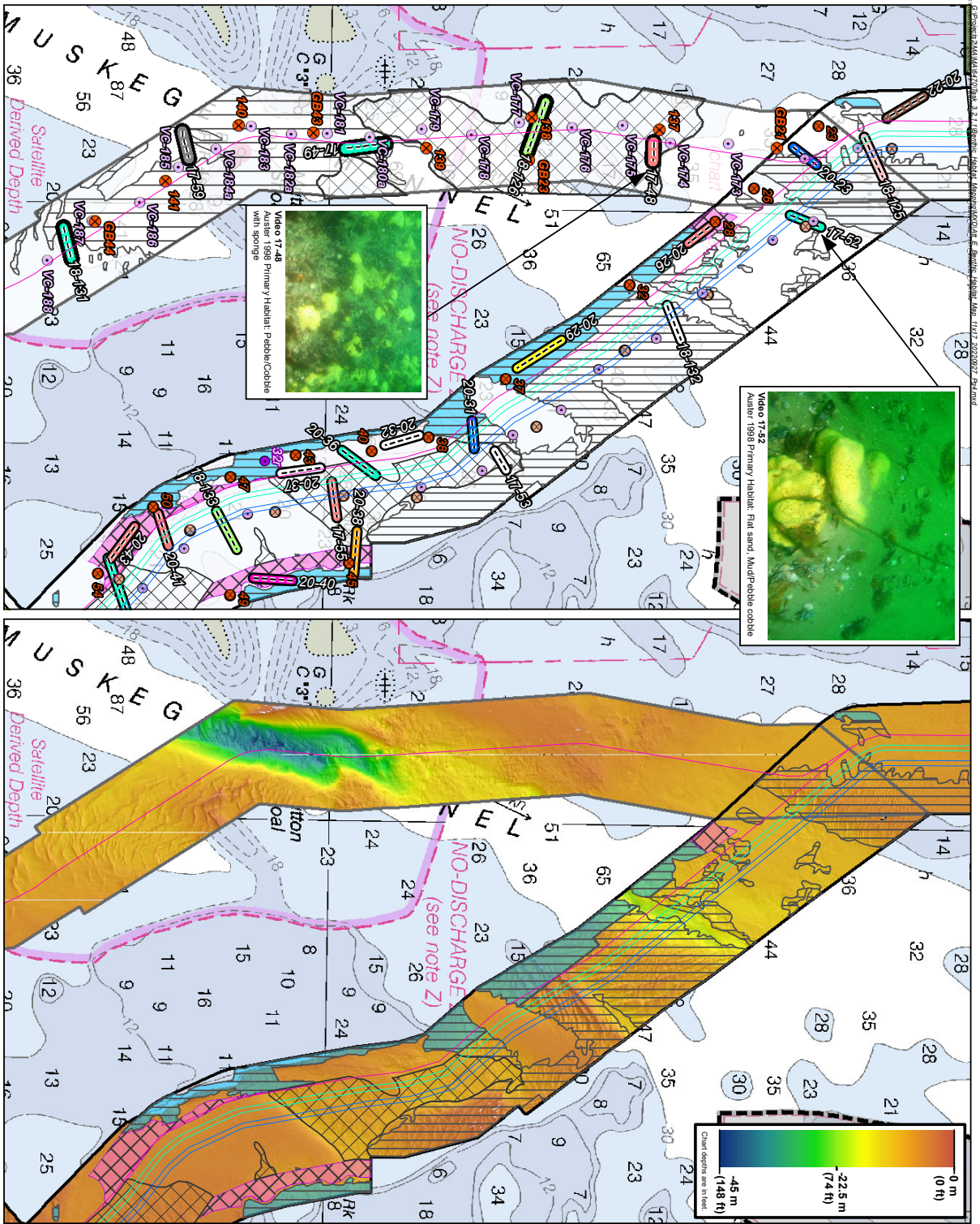
- Biogetic Structures
- Flat sand, Mud
- Flat sand, Mud/Silt/Shell Aggregates
- Flat sand, Mud/Pebble cobble
- Flat sand, Mud/Pebble cobble w/ sponge
- Flat sand, Mud/Pebble cobble w/ sponge
- Flat sand, Mud/Sand waves
- Flat sand, Mud/Shell Aggregates
- Pebble cobble
- Pebble cobble with sponge
- Pebble cobble w/ shell aggregates
- Shell aggregates
- Shell aggregates/Pebble cobble
- Shell aggregates/Flat sand, Mud
- Pebble cobble/Sand waves
- Pebble cobble/Flat sand, Mud
- Pebble cobble w/ sponge/Flat sand, Mud
- Pebble cobble w/ sponge
- Sand waves
- Sand waves/Pebble cobble
- Sand waves/Shell aggregates
- Shell aggregates
- Shell aggregates/Pebble cobble
- Shell aggregates/Flat sand, Mud

NOTE: Depths shown on nautical charts are in feet.

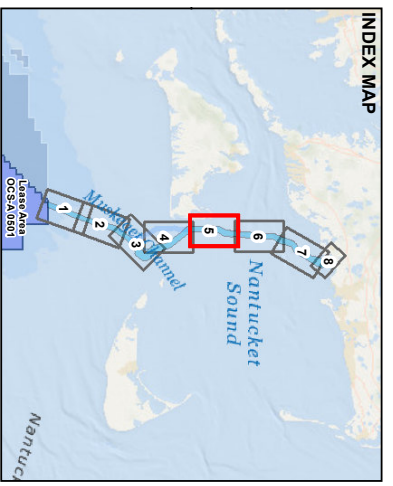
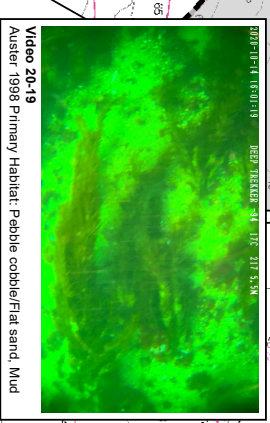
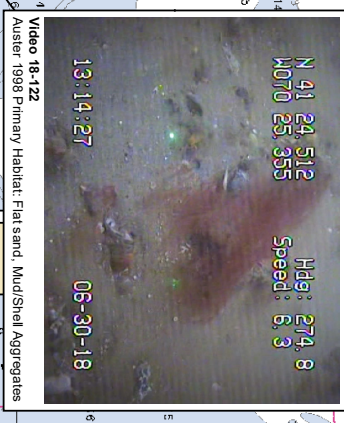
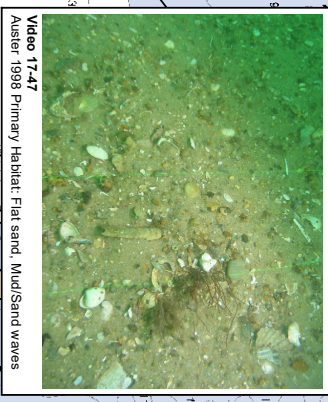
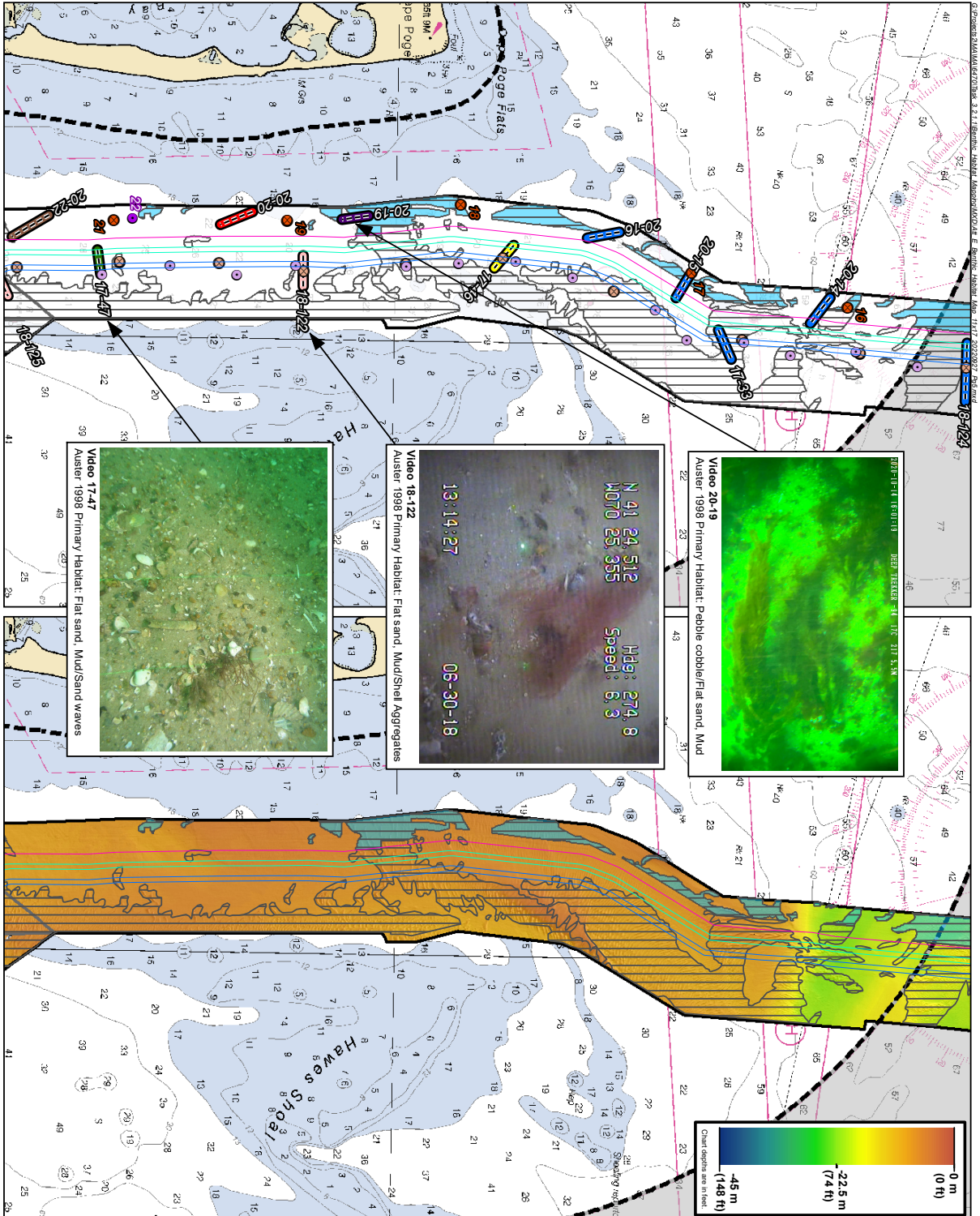
Scale 1:39,000
1 inch = 3,250 feet

0 1,625 3,250 Feet

SEPTEMBER 29, 2022



New England Wind 2 Connector Project



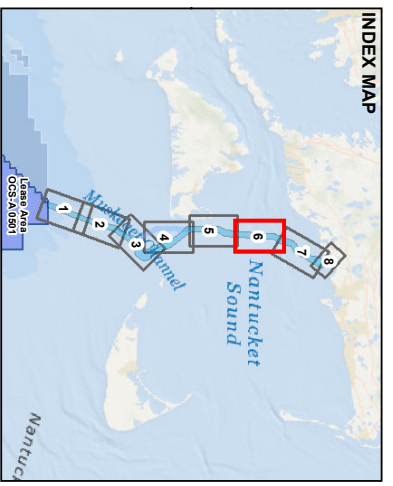
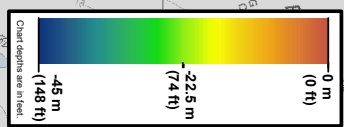
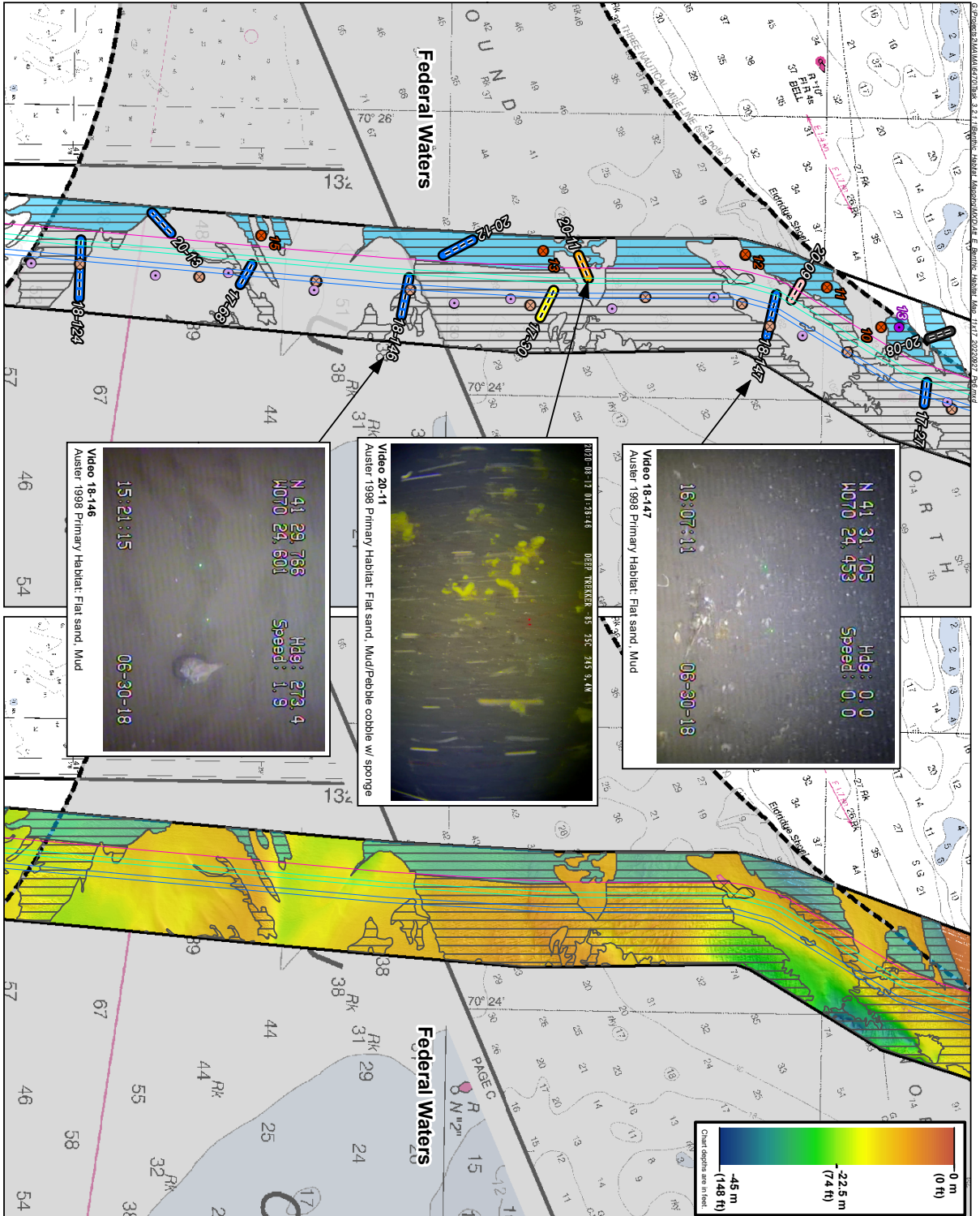
LEGEND

- Vivacores (2022)
- Vivacore (2020)
- Vivacore (2017-2019)
- Grab Samples (2022)
- Benthic Grabs (2020)
- Benthic Grabs (2017-2019)
- Video Transect
- State/Federal Boundary
- Elriggs - 2015 DEP Survey
- Hard Bottom/Course Deposits (2018 Survey)
- Biogenic/Surface Organisms & Mats (2018 Survey)
- Biogenic/Surface Organisms & Mats (2020 Survey)
- Complex Seafloor/Bedforms (2018 Survey)
- Complex Seafloor/Bedforms (2020 Survey)
- Offshore Export Cable Corridor (OECC)
- OECC Western Muskogean Variant
- New England Wind Connector/2/Commonwealth Wind Preliminary Offshore Cables 1 and 2
- New England Wind Connector/2/Commonwealth Wind Preliminary Offshore Cables - Western and Eastern Muskogean Variants
- Park City Wind Preliminary Offshore Cable Alignments
- Lease Area Boundary
- Massachusetts Ocean Management Planning Area Boundary
- Federal Waters
- Auster 1998 Primary Habitat: Video Transect Colors Correspond to Habitat Categories
 - Biogenic Structures
 - Flat sand, Mud
 - Flat sand, Mudd/Biogenic structures
 - Flat sand, Mudd/Pebble cobble
 - Flat sand, Mudd/Pebble cobble w/ sponge
 - Flat sand, Mudd/Pebble cobble w/ sponge
 - Flat sand, Mudd/Sand waves
 - Flat sand, Mudd/Shell Aggregates
 - Flat sand, Mudd/Shell Aggregates
 - Pebble cobble
 - Pebble cobble with sponge
 - Pebble cobble w/ sponge
 - Shell aggregate/Pebble cobble
 - Shell aggregate/Flat sand, Mud
 - Pebble cobble/Sand waves
 - Pebble cobble/Sand waves/Shell aggregates
 - Flat sand, Mudd/Sand waves
 - Flat sand, Mudd/Sand waves/Shell aggregates
 - Shell aggregate
 - Shell aggregate/Pebble cobble
 - Shell aggregate/Flat sand, Mud

Scale: 1:39,000
1 inch = 3,250 feet

0 1,625 3,250 Feet

NOTE: Depths shown on nautical charts are in feet.



LEGEND

- Viracores (2022)
- Viracore (2020)
- Viracore (2017-2019)
- Grab Samples (2022)
- Benthic Grabs (2020)
- Benthic Grabs (2017-2019)
- Video Transect
- State/Federal Boundary
- Elriggs - 2015 DEP Survey
- Hard Bottom/Course Deposits (2018 Survey)
- Bigenets/Surface Organics & Mats (2018 Survey)
- Bigenets/Surface Organics & Mats (2020 Survey)
- Complex Seafloor/Bedforms (2018 Survey)
- Complex Seafloor/Bedforms (2020 Survey)
- Offshore Export Cable Corridor (OECC)
- OECC Western Muskogean Variant
- New England Wind Connector/2/Commonwealth Wind Preliminary
- Offshore Cables 1 and 2
- New England Wind Connector/2/Commonwealth Wind Preliminary
- Offshore Cables - Western and Eastern Muskogean Variants
- Park City Wind Preliminary Offshore Cable Alignments
- Lease Area Boundary
- Massachusetts Ocean Management Planning Area Boundary
- Federal Waters

Auster 1998 Primary Habitat: Video Transect Colors Correspond to Habitat Categories

- Biogenic Structures
- Flat sand, Mud
- Flat sand, Mudd/Biogenic structures
- Flat sand, Mudd/Pebble cobble
- Flat sand, Mudd/Pebble cobble w/ sponge
- Flat sand, Mudd/Pebble cobble w/ sponge
- Flat sand, Mudd/Sand waves
- Flat sand, Mudd/Shell Aggregates
- Pebble cobble
- Pebble/Cobble with sponge
- Pebble/Cobble with shell
- Shell aggregates/Flat sand, Mud

Pebble Colors Correspond to Habitat Categories

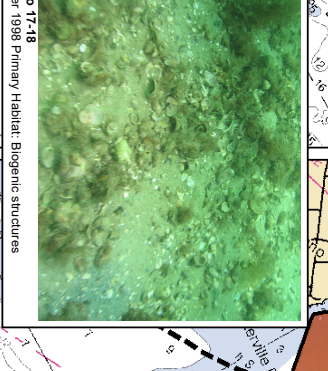
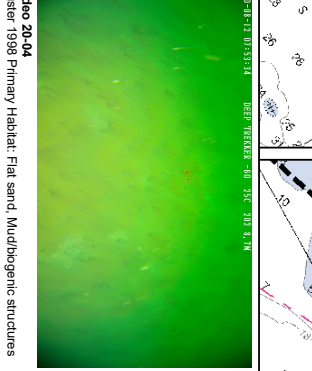
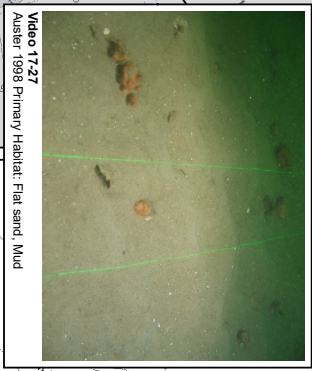
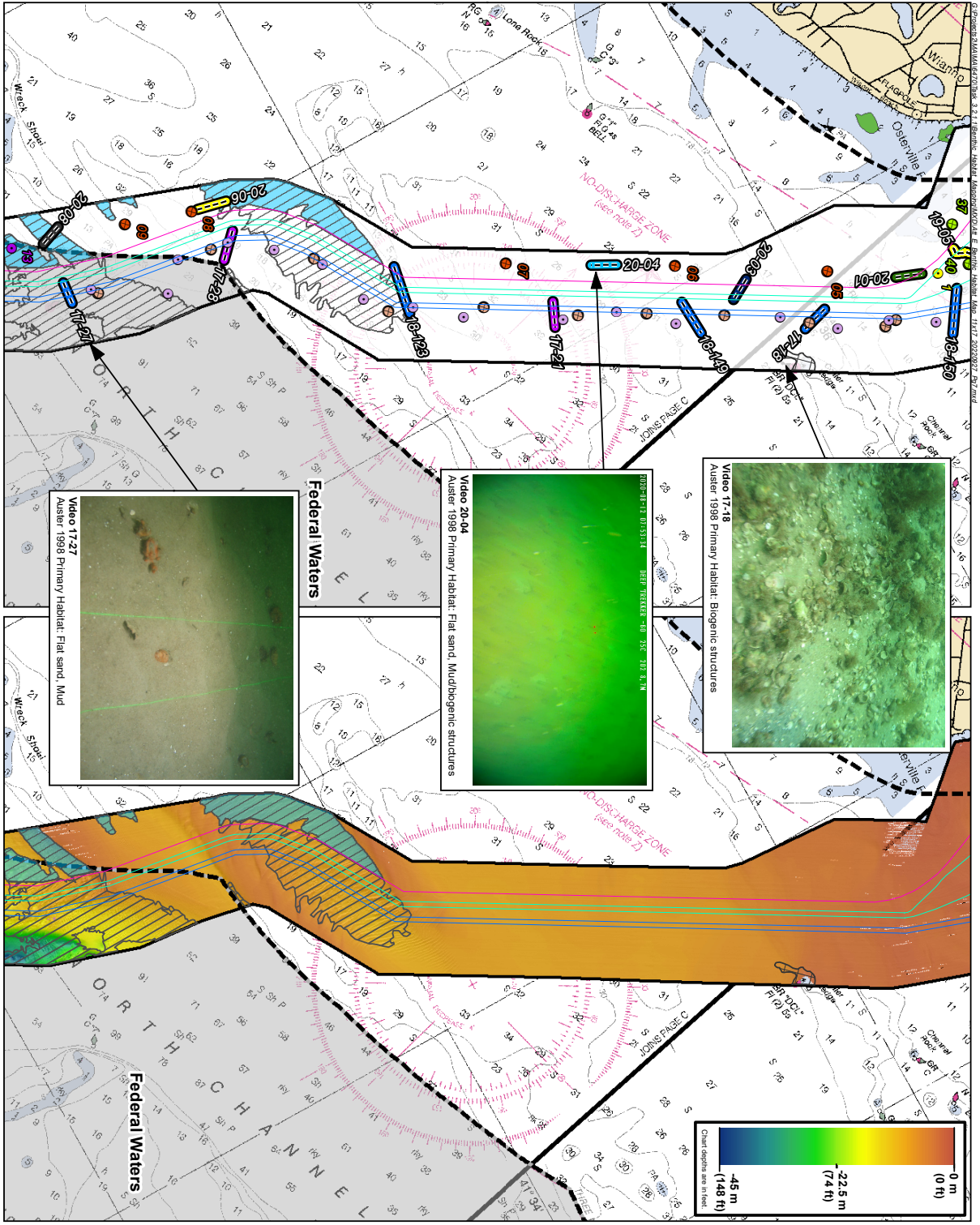
- Pebble cobble/Sand waves
- Pebble cobble/Flat sand, Mud
- Pebble cobble w/ sponge/Flat sand, Mud
- Sand waves
- Sand waves/Pebble cobble
- Sand waves/Shell aggregates
- Shell aggregates
- Shell aggregates/Pebble cobble
- Shell aggregates/Flat sand, Mud

NOTE: Depths shown on nautical charts are in feet.

Scale: 1:39,000
1 inch = 3,250 feet

0 1,625 3,250 Feet

SEPTEMBER 29, 2022



INDEX MAP

LEGEND

- Vibracores (2022)
- Vibracore (2020)
- Vibracore (2017-2019)
- Grab Samples (2022)
- Benthic Grabs (2020)
- Benthic Grabs (2017-2019)
- Video Transect
- State/Federal Boundary
- Edgartown - 2015 DEP Survey
- Hard Bottom/Course Deposits (2018 Survey)
- Biogenes/Surface Organics & Mats (2018 Survey)
- Biogenes/Surface Organics & Mats (2020 Survey)
- Complex Seafloor/Bedforms (2018 Survey)
- Complex Seafloor/Bedforms (2020 Survey)
- Offshore Export Cable Corridor (OECC)
- OECC Western Muskeget Variant
- New England Wind Connector 2/Commonwealth Wind Preliminary
- Offshore Cables 1 and 2
- New England Wind Connector 2/Commonwealth Wind Preliminary
- Offshore Cables - Western and Eastern Muskeget Variants
- Park City Wind Preliminary Offshore Cable Alignments
- Lease Area Boundary
- Massachusetts Ocean Management Planning Area Boundary
- Federal Waters

Auster 1998 Primary Habitat: Video Transect Colors Correspond to Habitat Categories

- Biogenic Structures
- Biogenic Structures
- Flat sand, Mud
- Flat sand, Mud biogenic structures
- Flat sand, Mud/Pebble cobble
- Flat sand, Mud/Pebble cobble w/ sponge
- Flat sand, Mud/Pebble cobble w/ sponge
- Flat sand, Mud/Sand waves
- Flat sand, Mud/Shell Aggregates
- Pebble cobble
- Pebble cobble with sponge
- Pebble cobble w/ shell aggregates
- Shell aggregates/Pebble cobble
- Shell aggregates/Flat sand, Mud

Federal Waters

- Pebble cobble/Sand waves
- Pebble cobble/Flat sand, Mud
- Pebble cobble w/ sponge/Flat sand, Mud
- Sand waves
- Sand waves/Pebble cobble
- Sand waves/Shell aggregates
- Shell aggregates
- Shell aggregates/Pebble cobble
- Shell aggregates/Flat sand, Mud

NOTE: Depths shown on nautical charts are in feet.

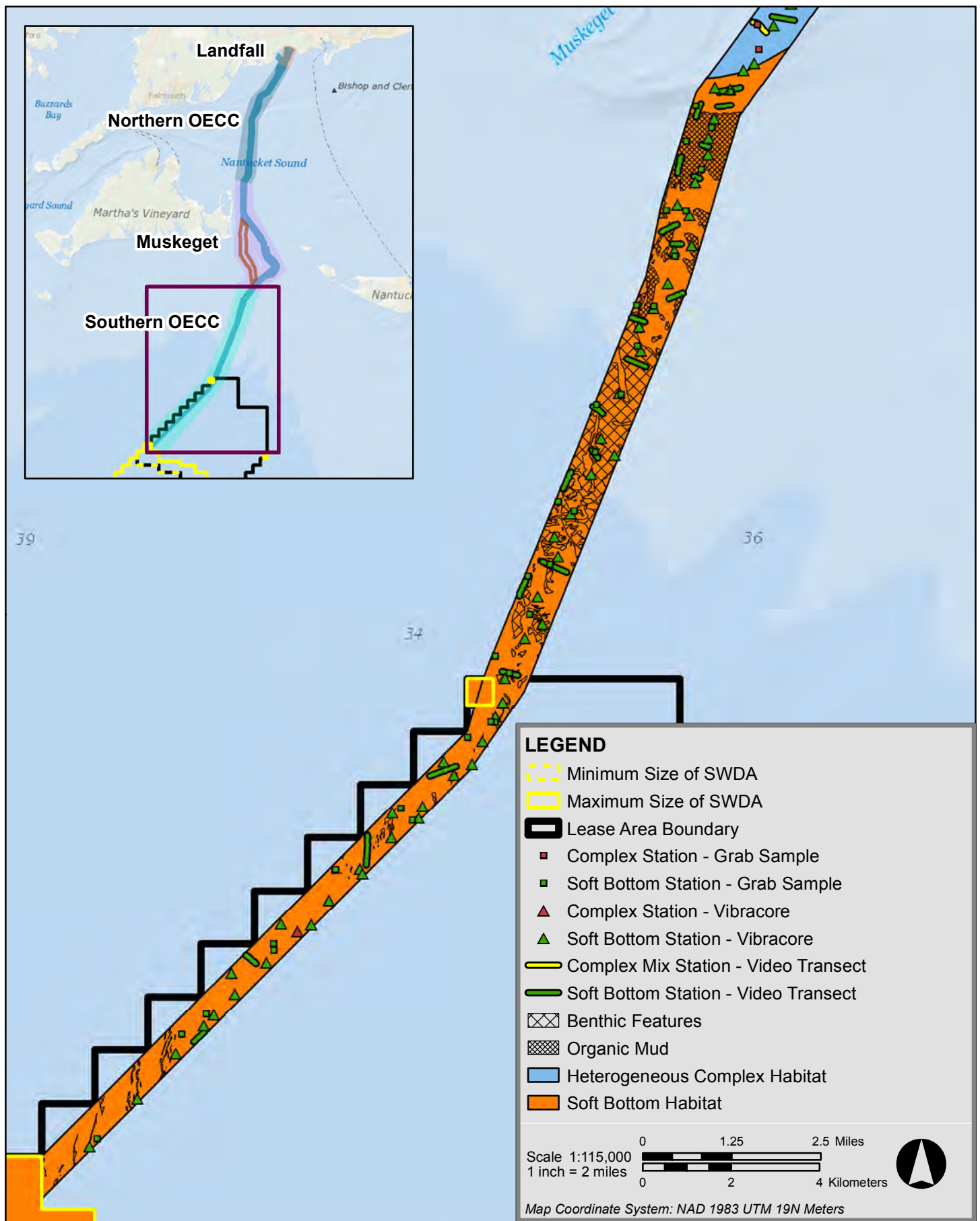
Scale 1:39,000

1 inch = 3,250 feet

0 1,625 3,250 Feet

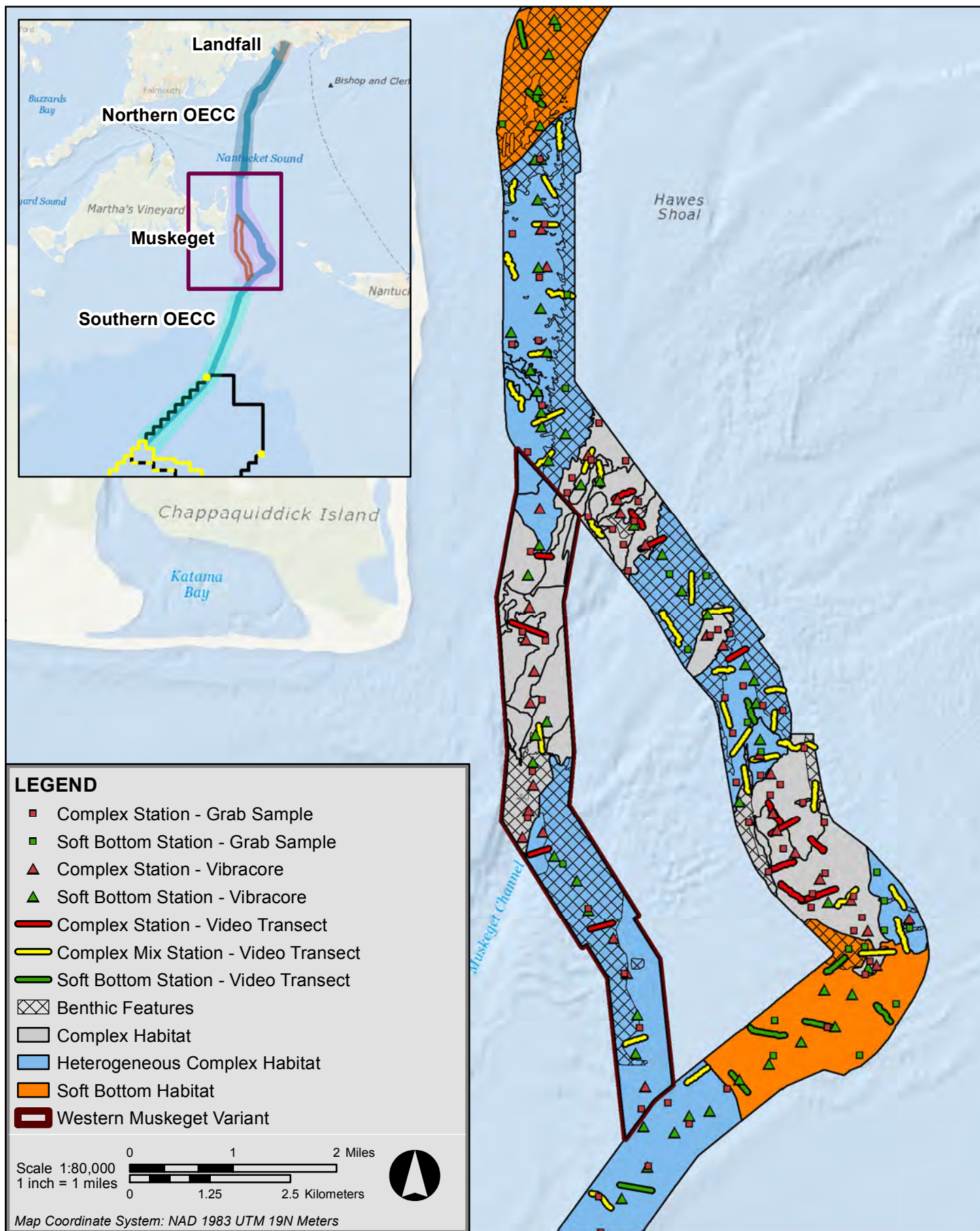
Attachment E2

Benthic Habitat Map Set – Coastal and Marine Ecological Classification Standard
(CMECS) System



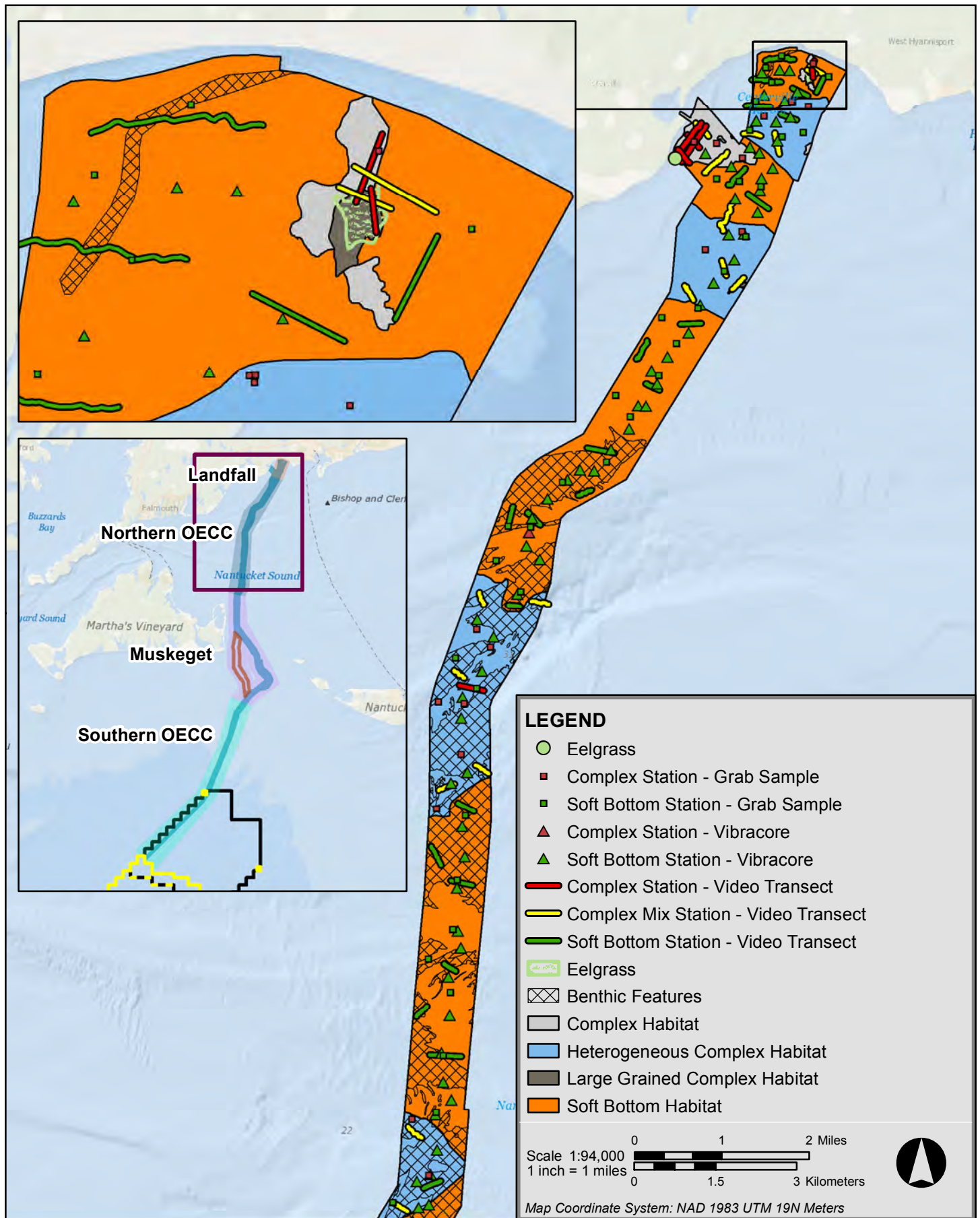
Service Layer Credits: Sources: Esri, GEBCO, NOAA, National Geographic, Garmin, HERE, Geonames.org, and other contributors

Source: New England Wind, Essential Fish Habitat Assessment, June 2022. Submitted to BOEM as Appendix III-F to the June 2022 COP for Lease Area OCS-A 0534.



Service Layer Credits: Sources: Esri, GEBCO, NOAA, National Geographic, Garmin, HERE, Geonames.org, and other contributors

Source: New England Wind, Essential Fish Habitat Assessment, June 2022. Submitted to BOEM as Appendix III-F to the June 2022 COP for Lease Area OCS-A 0534.



Service Layer Credits: Sources: Esri, GEBCO, NOAA, National Geographic, Garmin, HERE, Geonames.org, and other contributors

Source: New England Wind, Essential Fish Habitat Assessment, June 2022. Submitted to BOEM as Appendix III-F to the June 2022 COP for Lease Area OCS-A 0534.